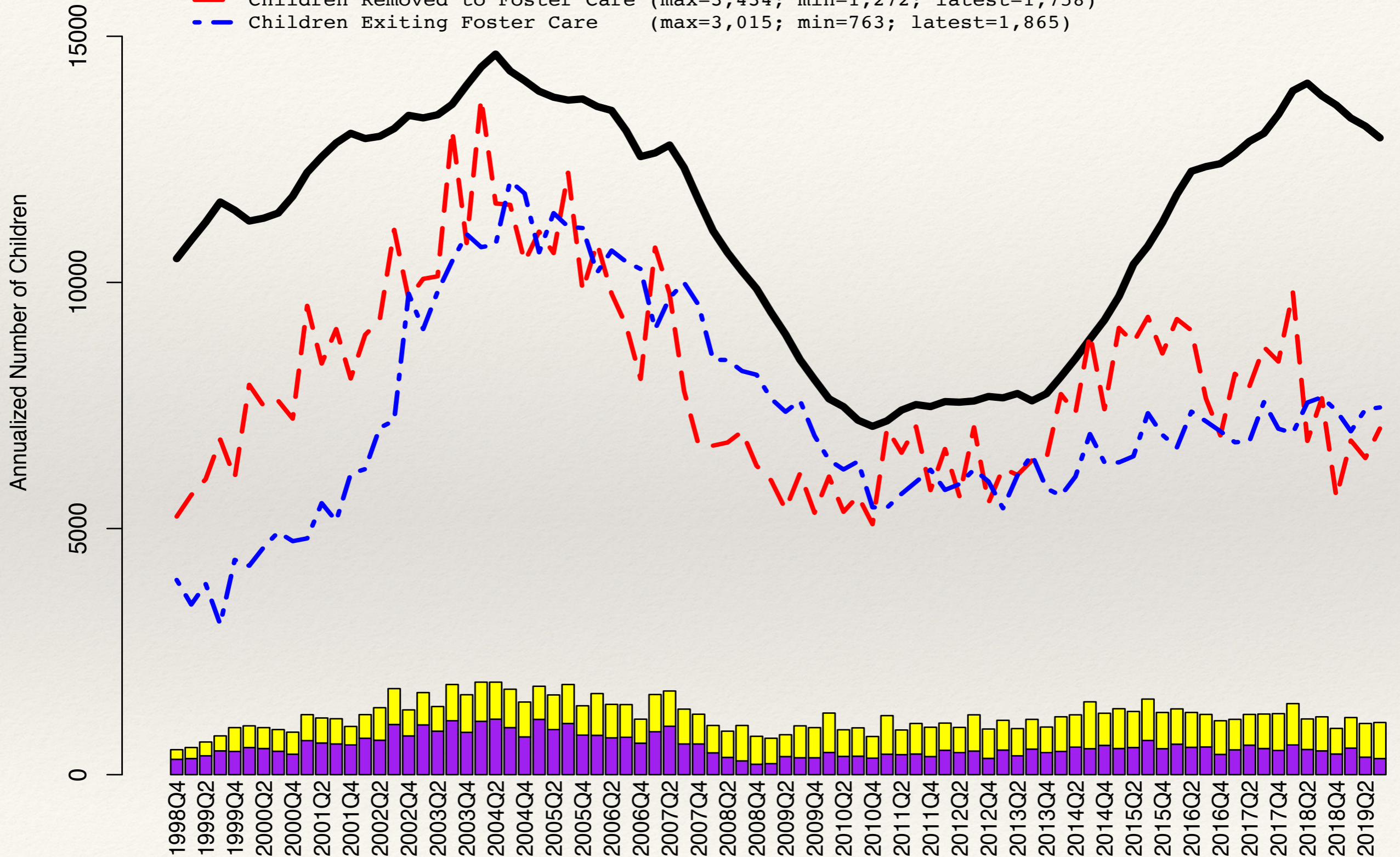

CII DATA

February 27, 2020
SAVANNAH, GEORGIA

Statewide: Foster Care Dynamics

October 1998 through September 2019 by Quarter

- Reentries w/in 12 Months (max=282; min=53; latest=82)
- Reentries After 12 Months (max=238; min=49; latest=183)
- Number of Children in Care (max=14,637; min=7,076; latest=12,937)
- Children Removed to Foster Care (max=3,434; min=1,272; latest=1,758)
- Children Exiting Foster Care (max=3,015; min=763; latest=1,865)



Total Georgia children in out-of-home care as of February 23, 2018:

13,938

All-time high foster population in Georgia:

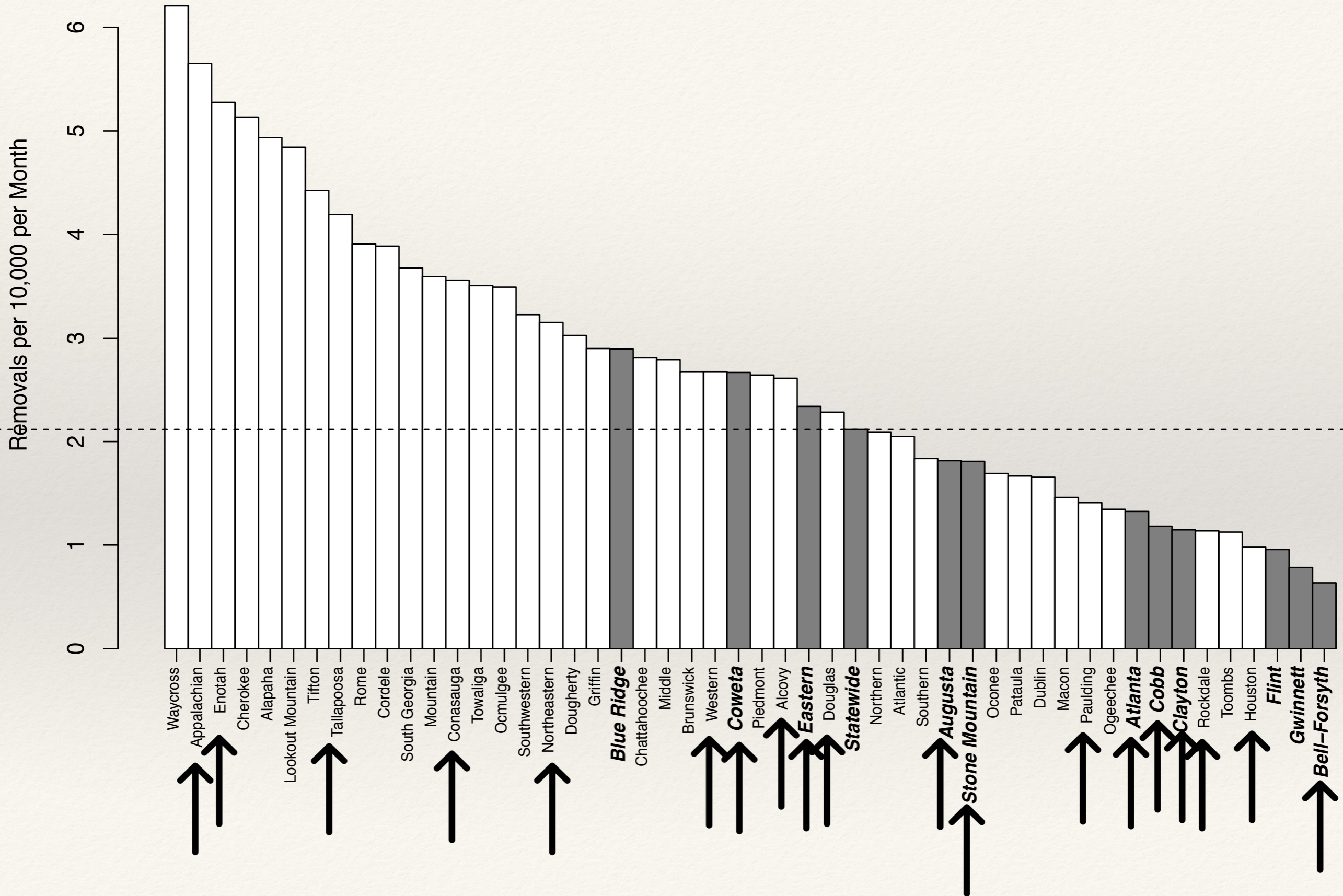
~15,000

Total Georgia children in out-of-home care as of February 25,
2020:

12,826

Circuit Rankings: Average Removals per 10,000 Children in the Population per Month, October 2018 through September 2019

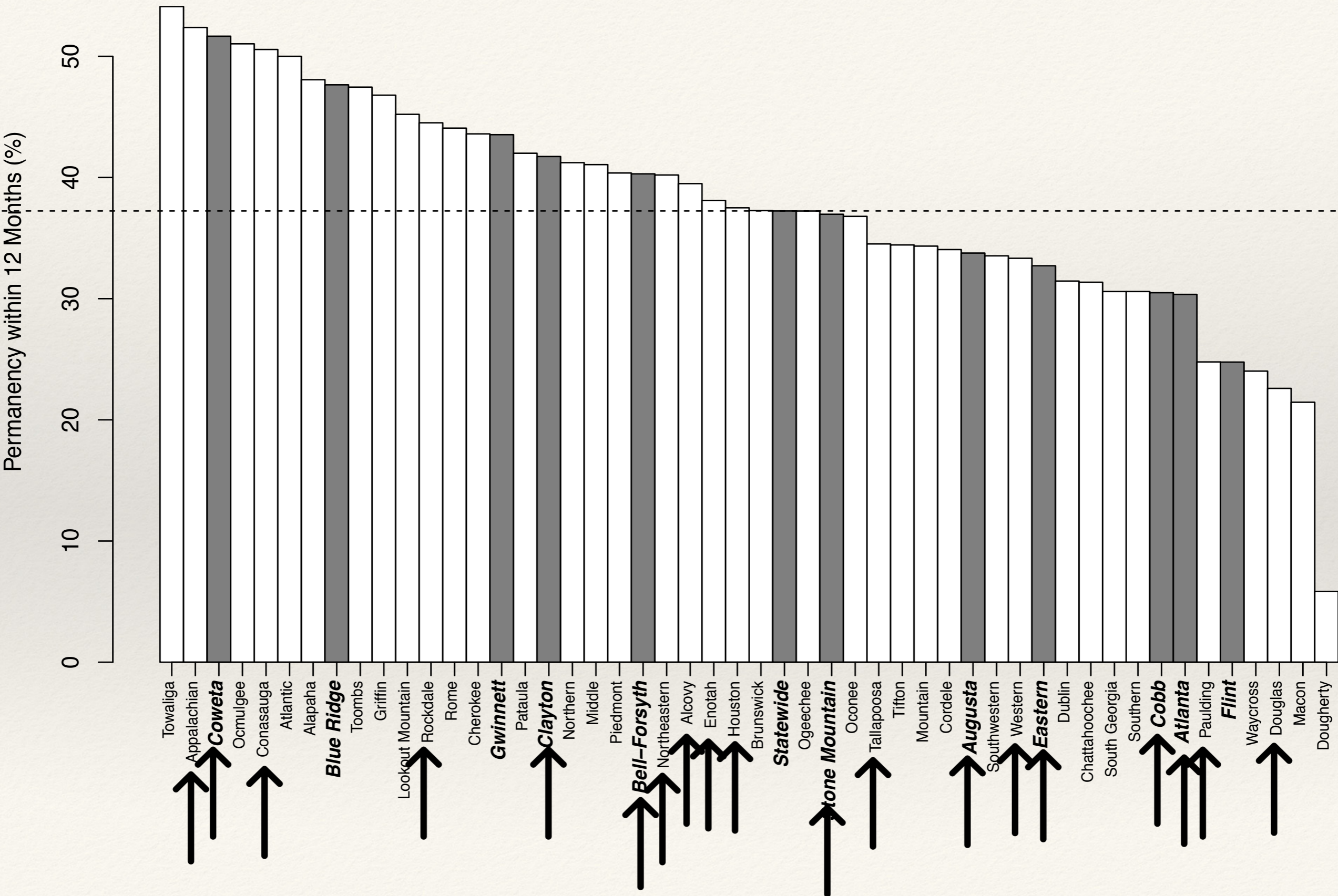
■ Regions with more than 60,000 children in the population.



APPALACHIAN (MED. TIME IN CARE ON 9/30/18 & 9/30/19)	8.4	11.8
BARTOW CO.	10.9	11.9
CHATHAM CO.	13.9	20.4
CLARKE CO.	12.6	17.8
CLAYTON	15.3	18.8
COBB	12.1	14.7
CONASAUGA	14.8	12.7
COWETA CO.	12.3	6.1
DEKALB CO.	20.3	19.1
DOUGLAS	13.2	19.3
ENOTAH	11.2	12.3
FORSYTH CO.	9.9	15.1
FULTON CO.	18.0	16.6
HEARD CO.	3.4	11.0
HOUSTON	11.6	13.1
NEWTON CO.	16.2	11.7
NORTHEASTERN (DAWSON/HALL)	11.1/11.2	13.6/13.2
OCONEE CO.	5.1	9.7
PAULDING	10.5	13.2
RICHMOND CO.	8.9	16.9
ROCKDALE	17.4	19.6
TALLAPOOSA	15.6	15.8
TROUP CO.	11.1	10.0
STATE	14.1	16.3

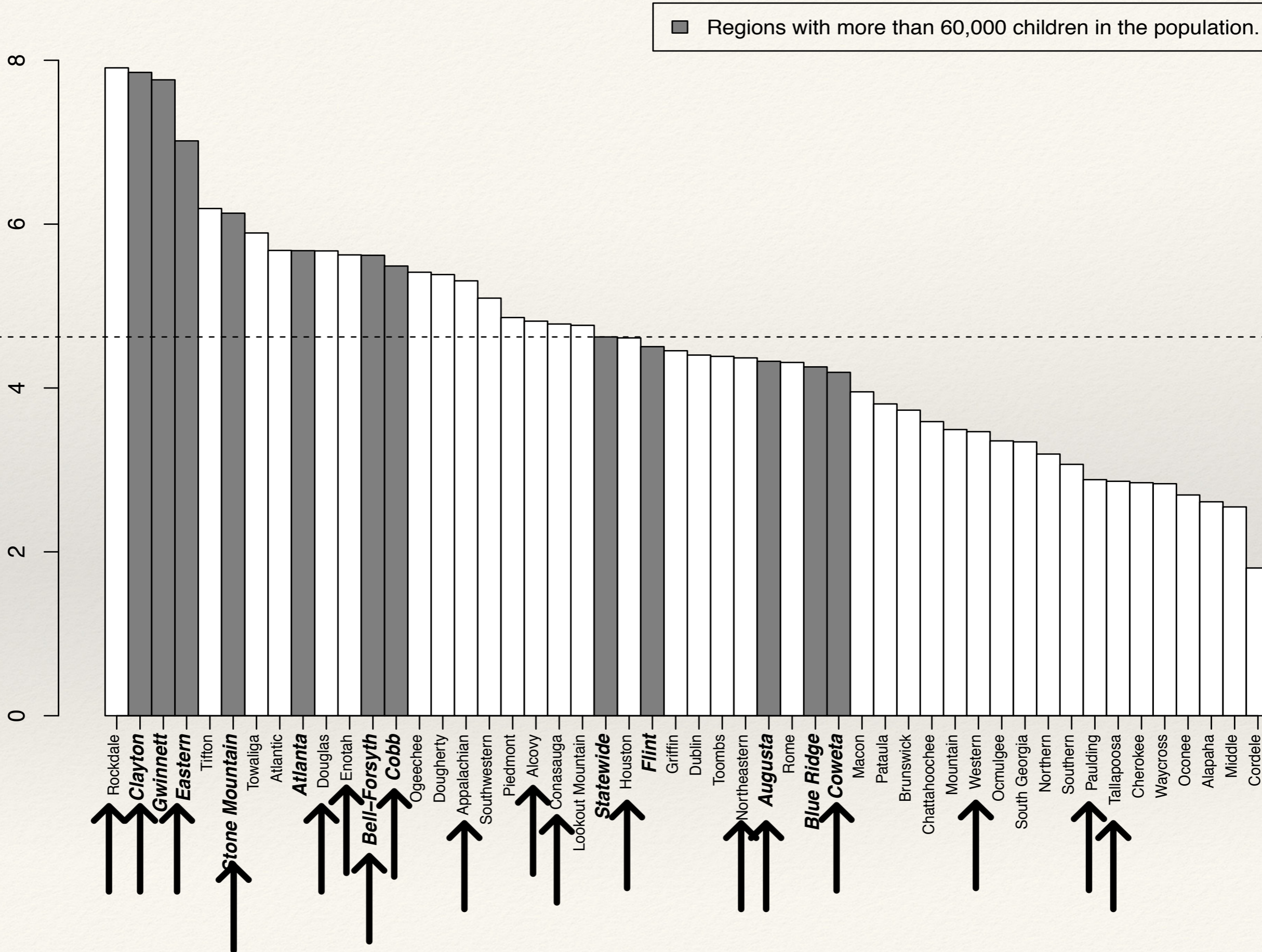
Circuit Rankings: Percent of Children In Care on September 30 2018 Achieving Permanency within 12 Months

■ Regions with more than 60,000 children in the population.



Circuit Rankings: Placement Moves During First 12 Months In Care per 1,000 Child-Days as of September 30 2019

Placement Moves During First 12 Months In Care per 1,000 Child-Days



Discharges, 10/18 - 9/19

❖ Total:	16,487	100%
❖ Reun:		45%
❖ Adopt:		19%
❖ Relative:		10%
❖ Emancip:		9%
❖ G-ship:		15%