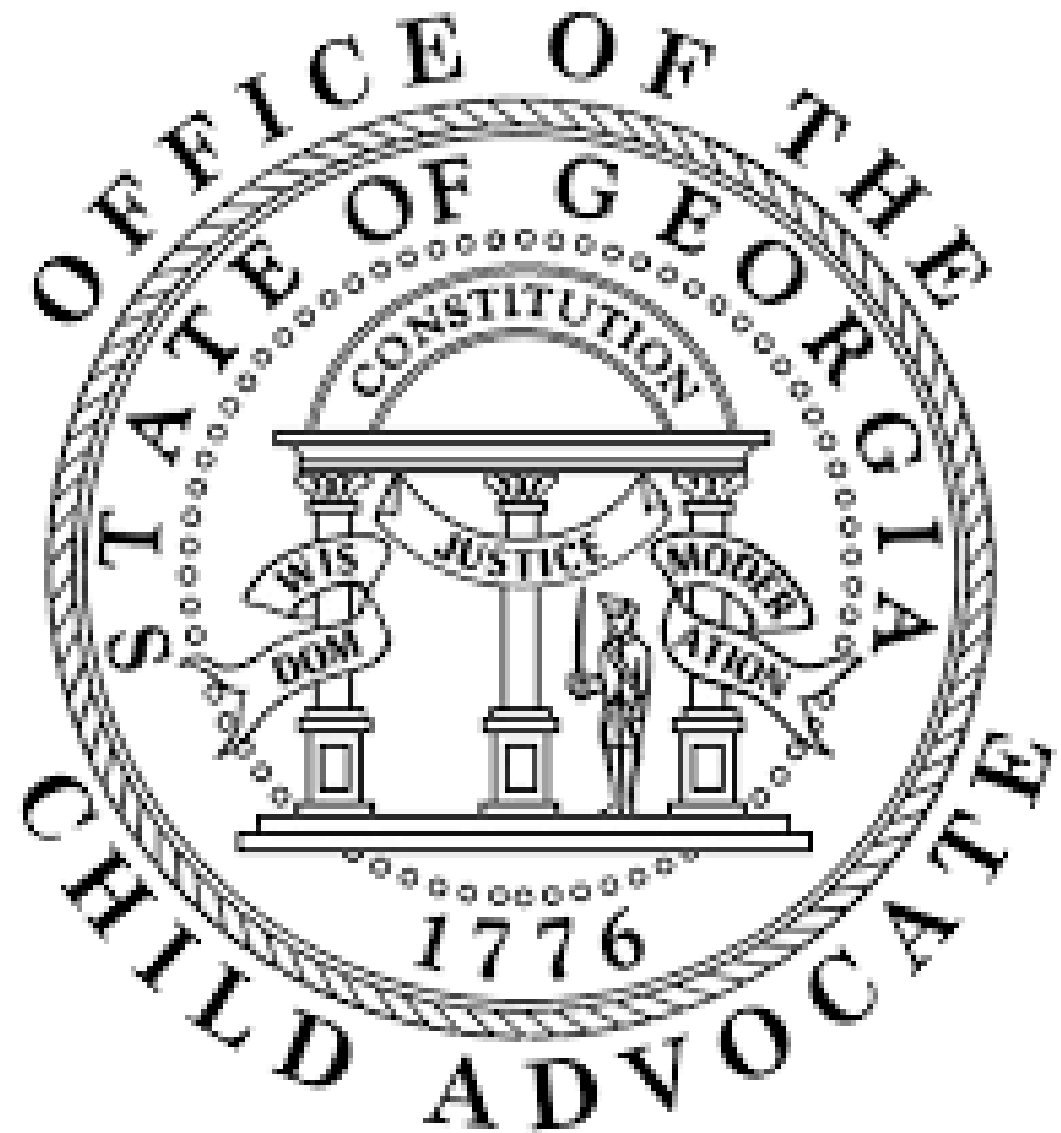


A Lot (But Not Quite All) Of the Coweta Circuit



Child Welfare Data
December 2, 2021



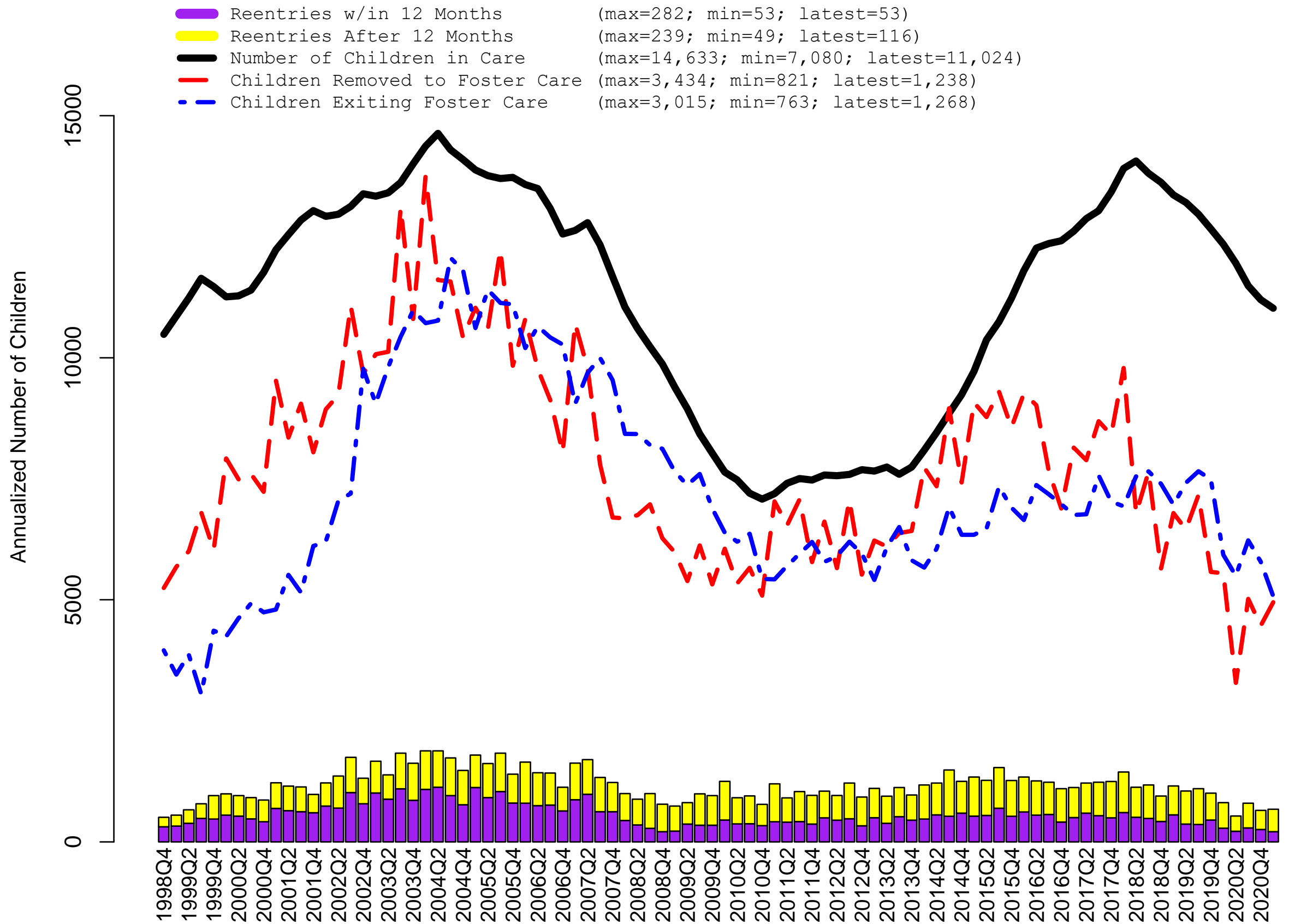
“You can have data without information,
but you cannot have information
without data.”

--Daniel Keys Moran

Part 1: Overview

Statewide: Foster Care Dynamics

October 1998 through March 2021 by Quarter

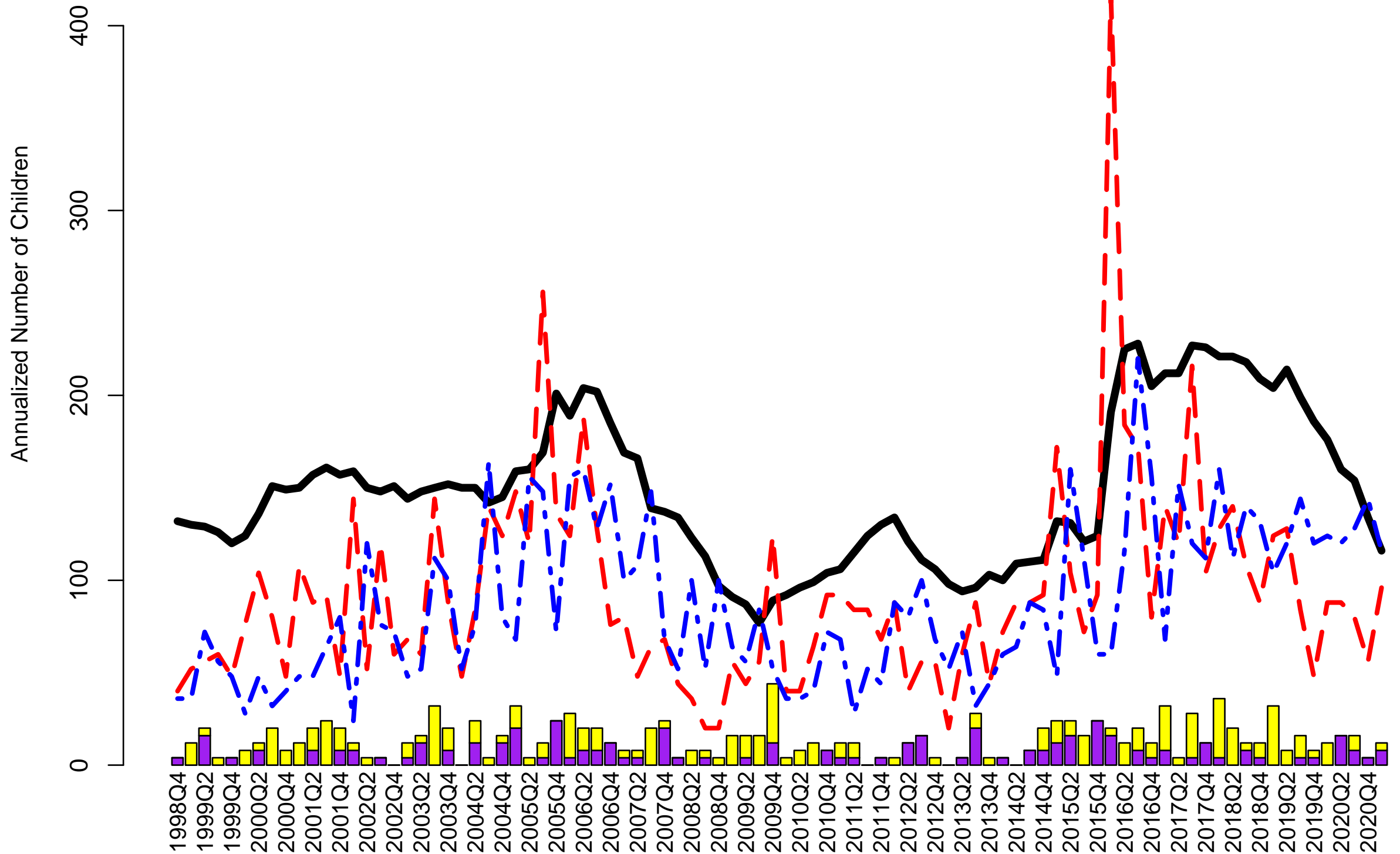




Carroll County: Foster Care Dynamics

October 1998 through March 2021 by Quarter

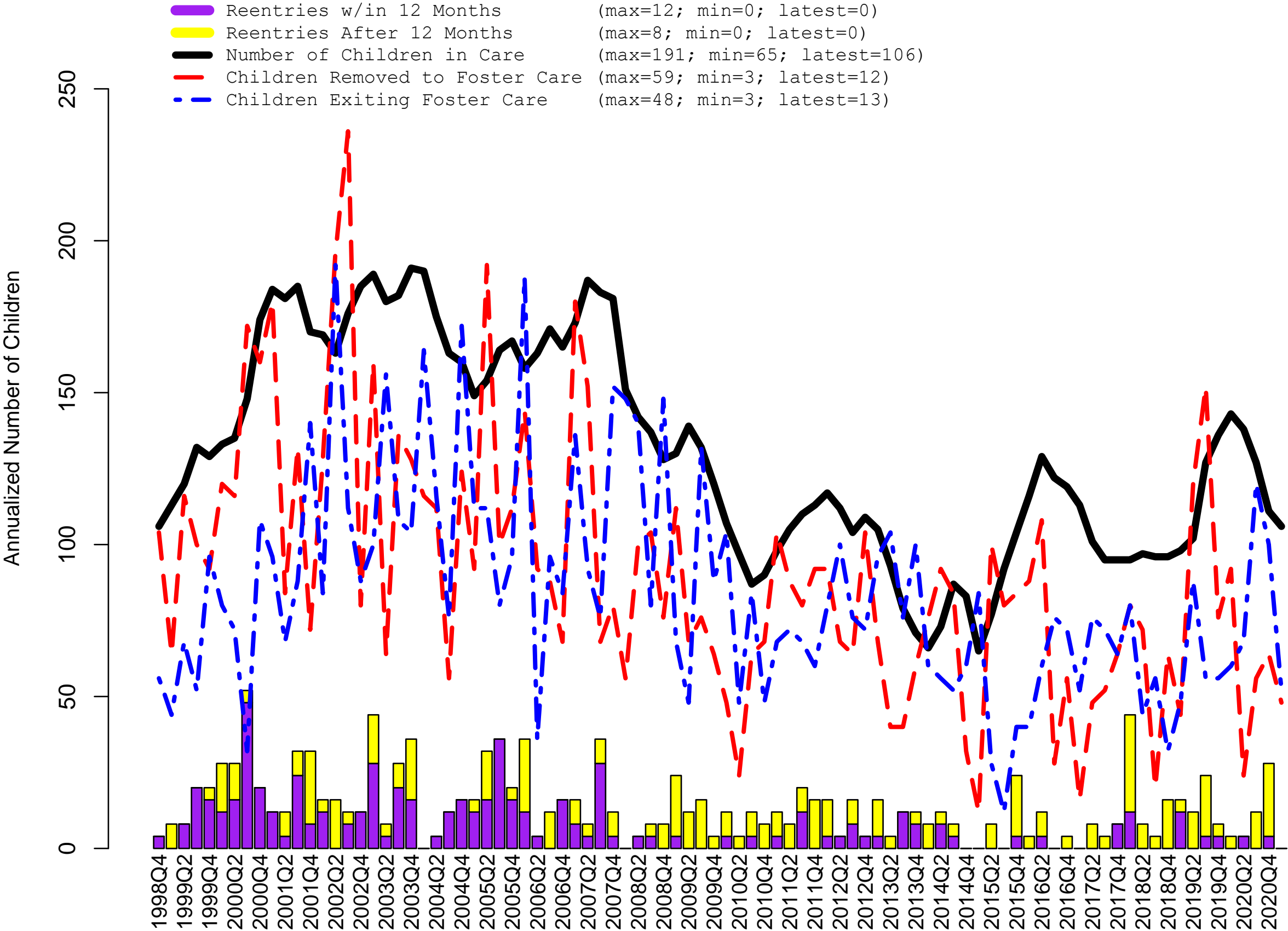
- Reentries w/in 12 Months (max=6; min=0; latest=2)
- Reentries After 12 Months (max=8; min=0; latest=1)
- Number of Children in Care (max=228; min=77; latest=116)
- Children Removed to Foster Care (max=104; min=5; latest=24)
- Children Exiting Foster Care (max=55; min=6; latest=29)





Coweta County: Foster Care Dynamics

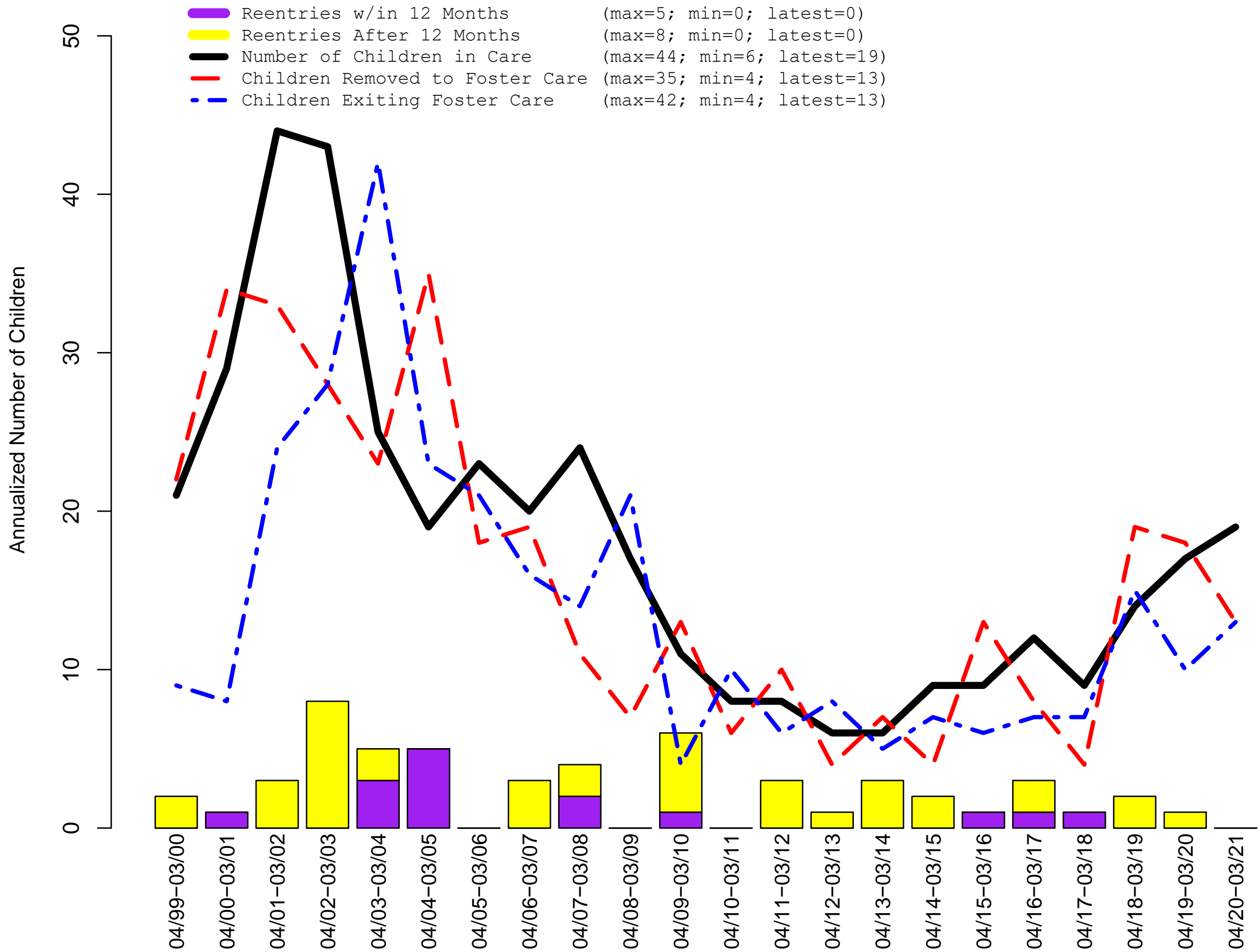
October 1998 through March 2021 by Quarter





Heard County: Foster Care Dynamics

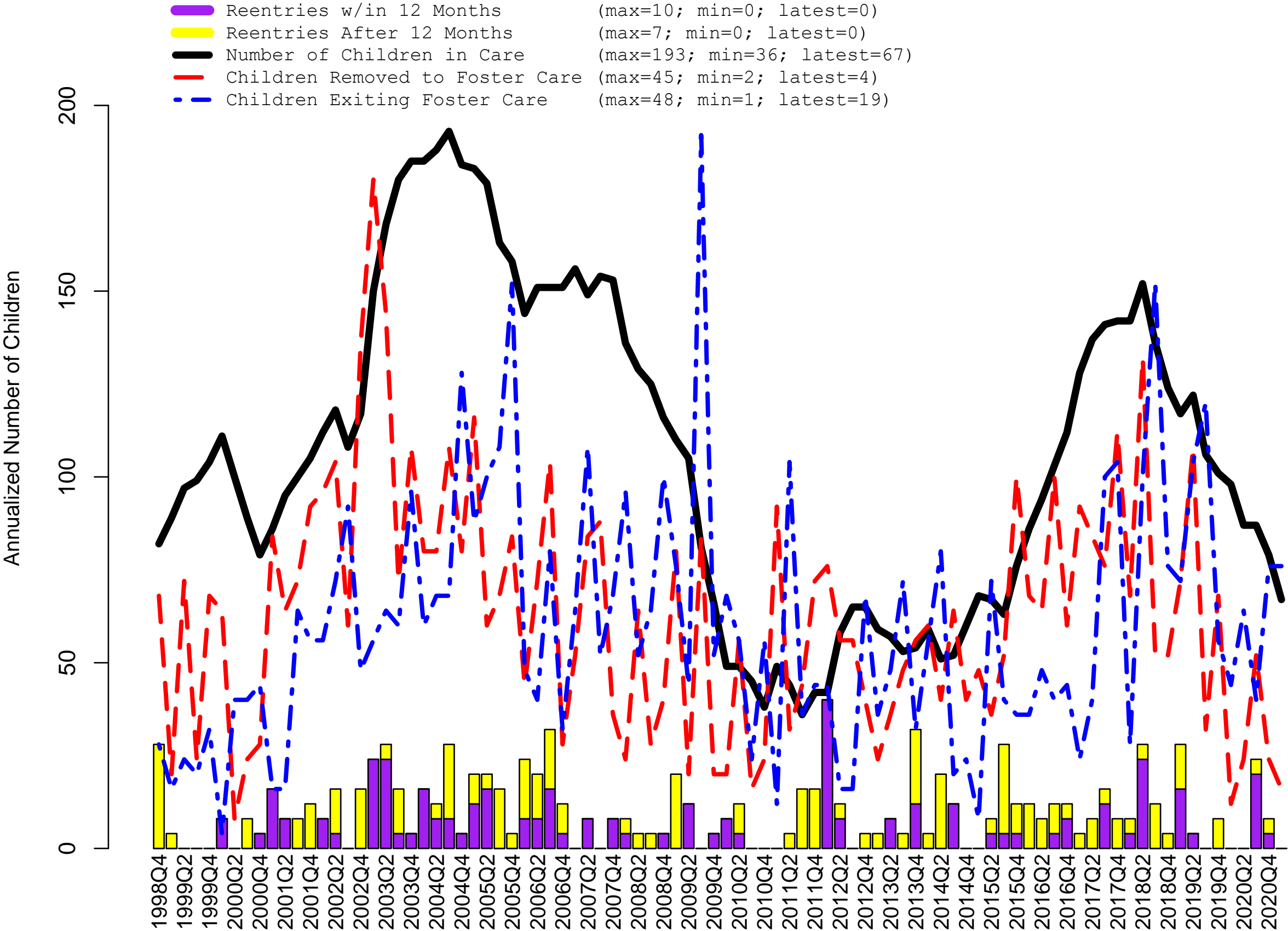
October 1998 through March 2021 by Year





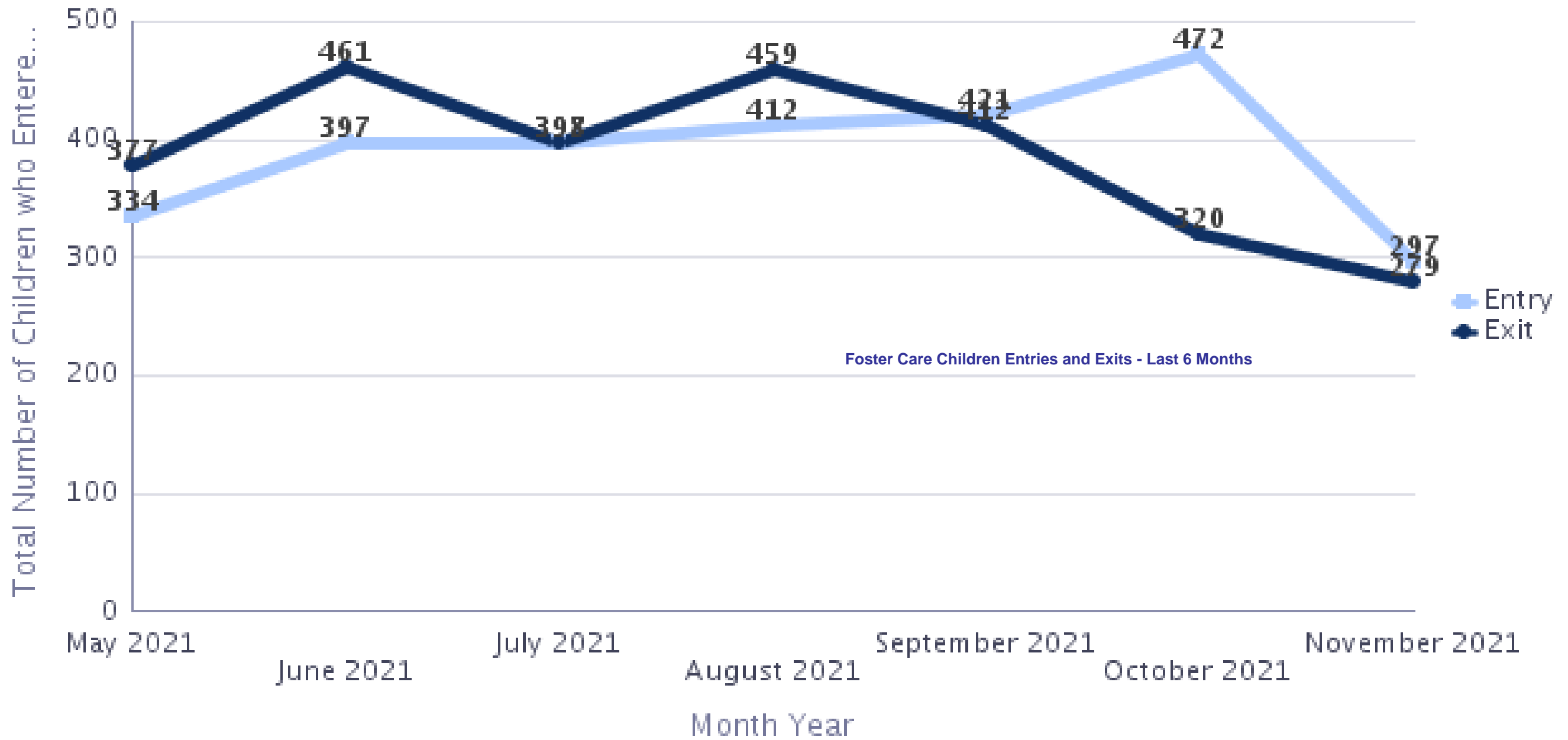
Troup County: Foster Care Dynamics

October 1998 through March 2021 by Quarter





Foster Care Entries & Exits – Last 6 Months



Foster Care Populations as of 11/29/21

State: 10,743

Carroll: 154

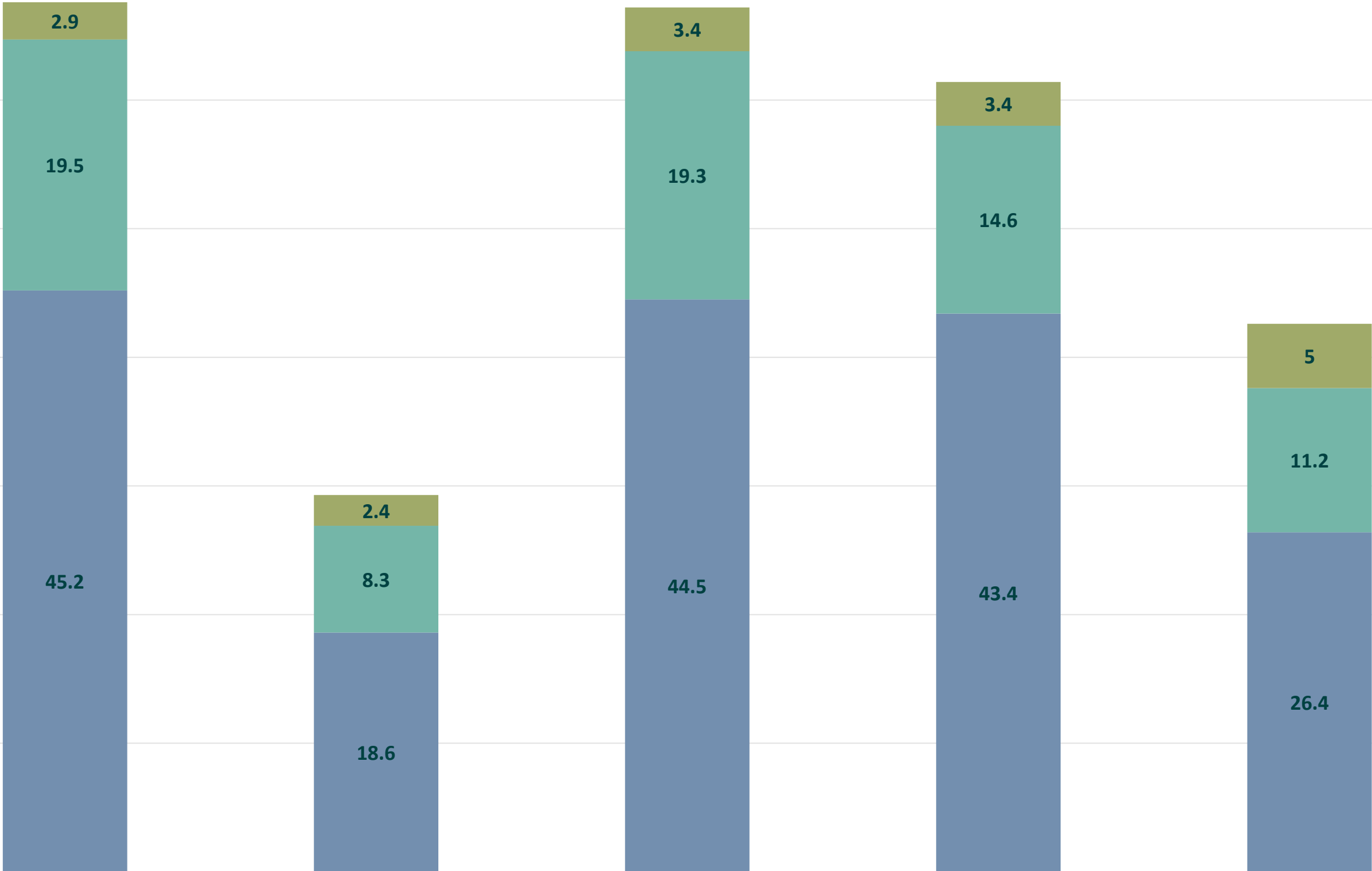
Coweta: 102

Heard: 19

Troup: 85

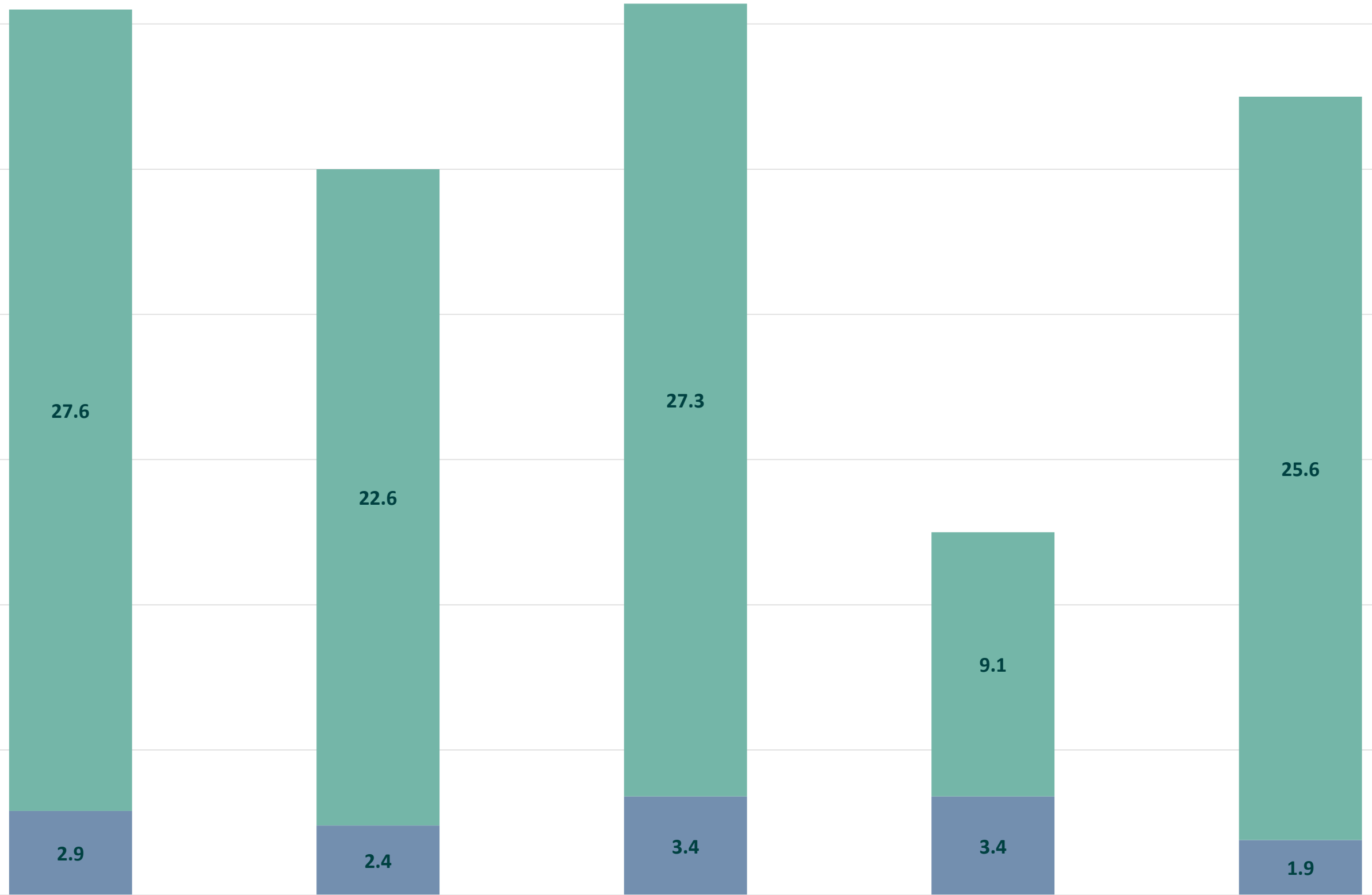
Part 2:
CPS &
Removals

CPS Dynamics, per 10k



■ Reports ■ Investigations ■ Victims

Removals



Carroll

Coweta

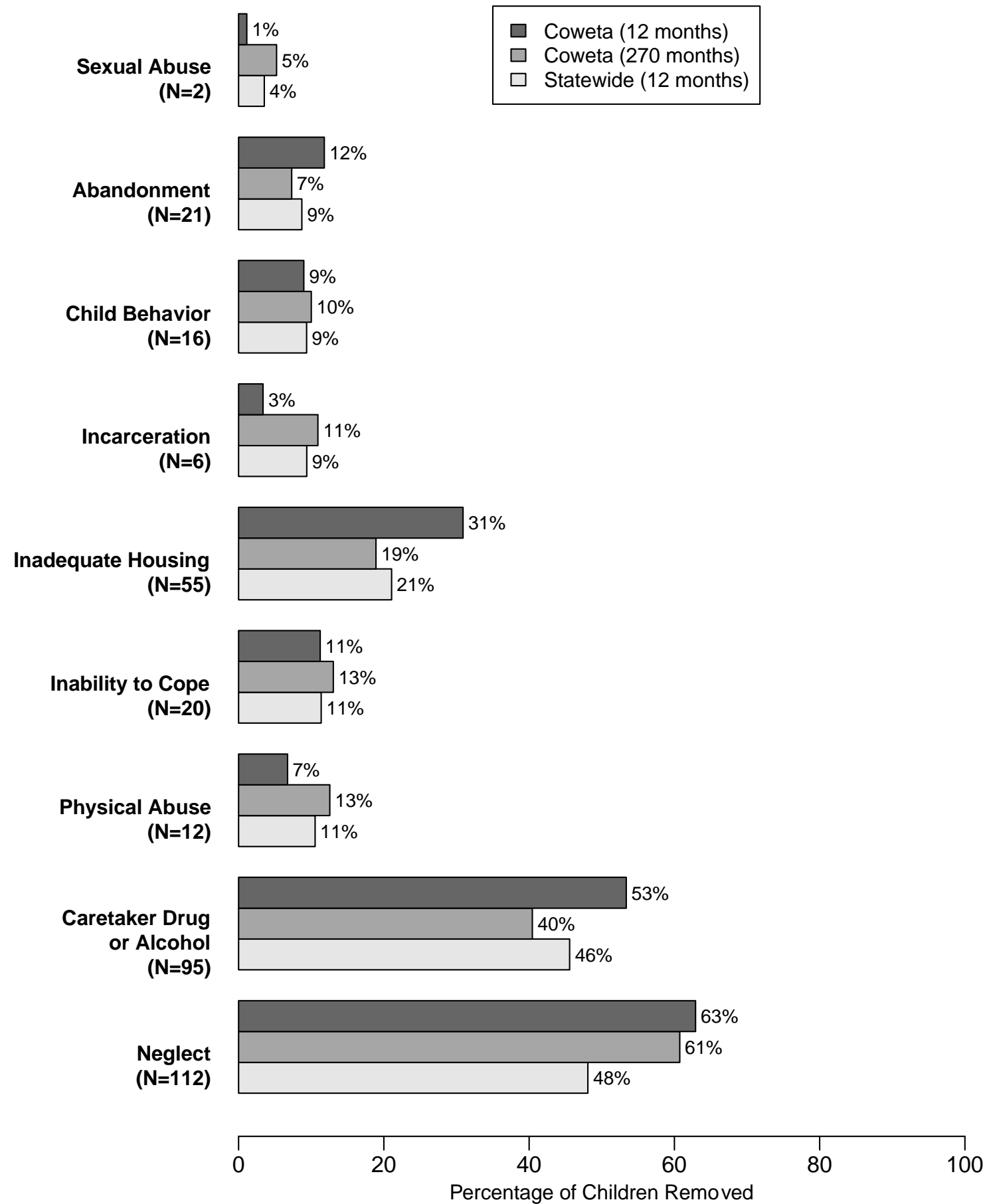
Heard

Troup

State

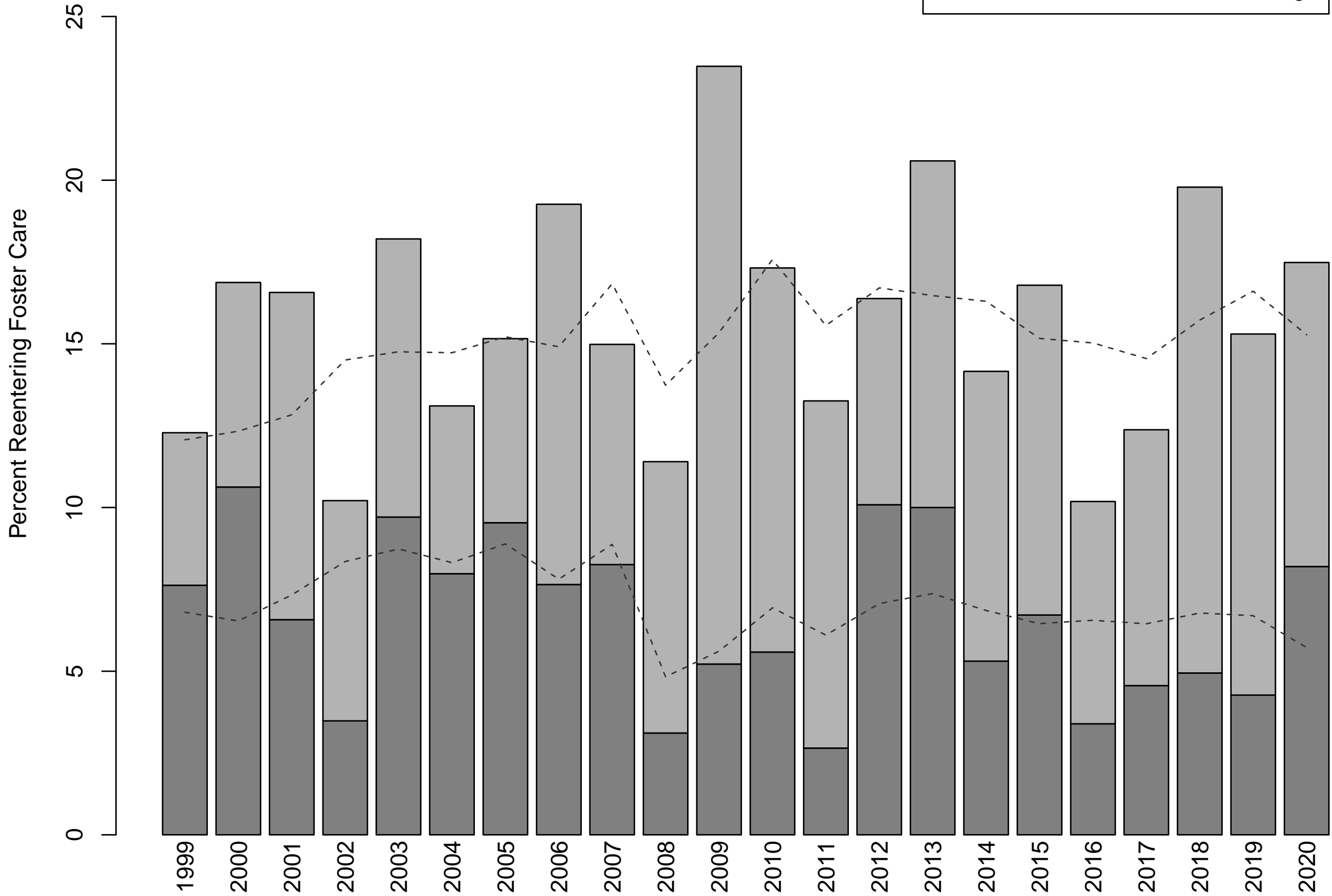
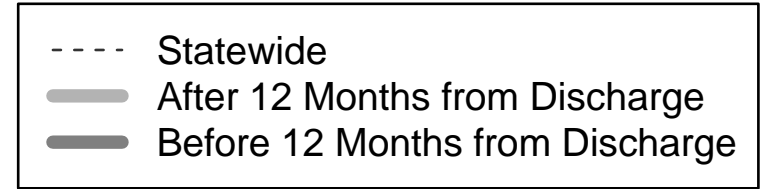
■ Victims per 10k ■ Percent Removed

Coweta Circuit: Reasons for Removal, October 1998 through March 2021

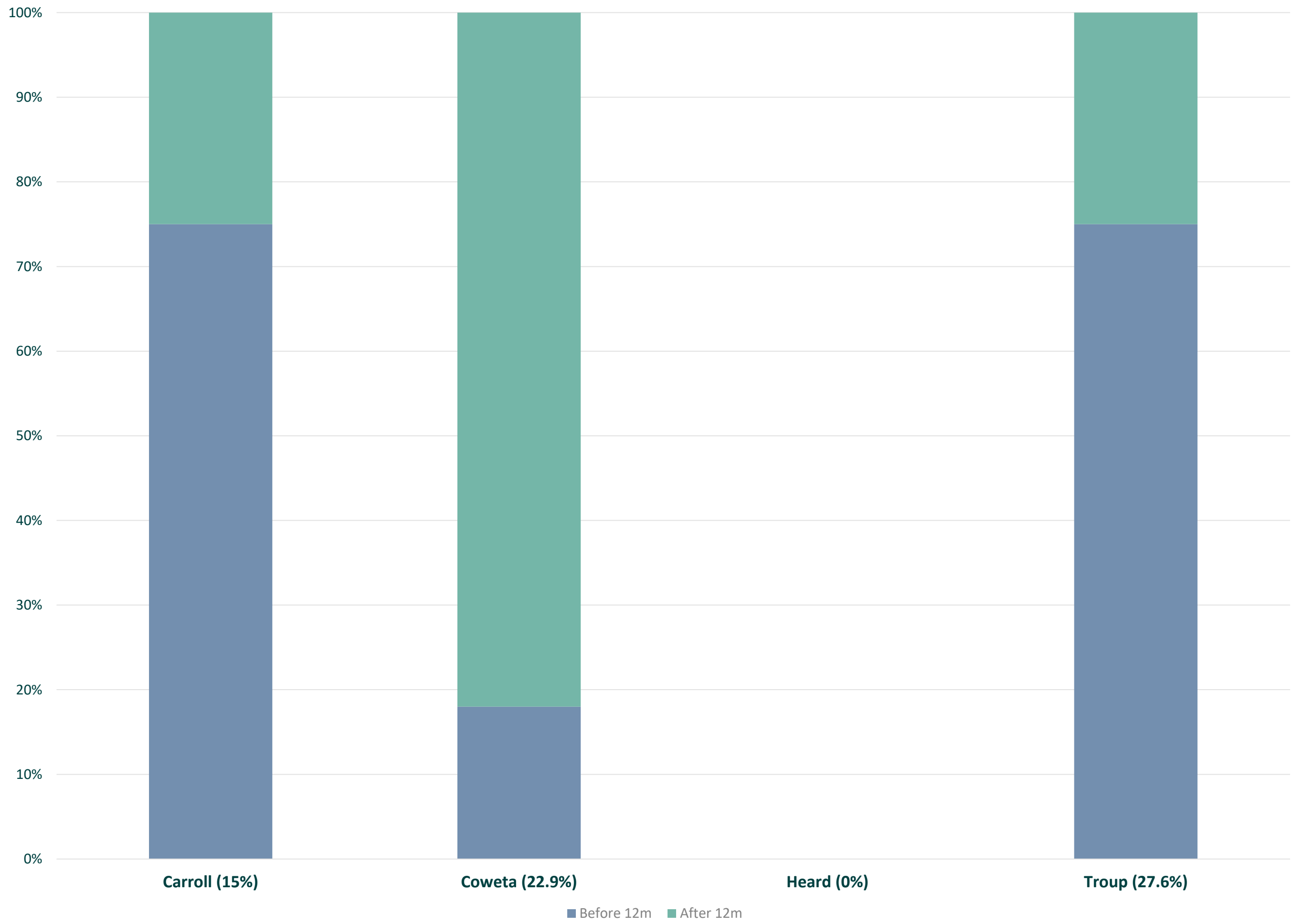


Coweta Circuit: Reentries to Foster Care as Percentage of Removals by Calendar Year, CY1999 through CY2020

Coweta average = 16%
 Statewide average = 15%

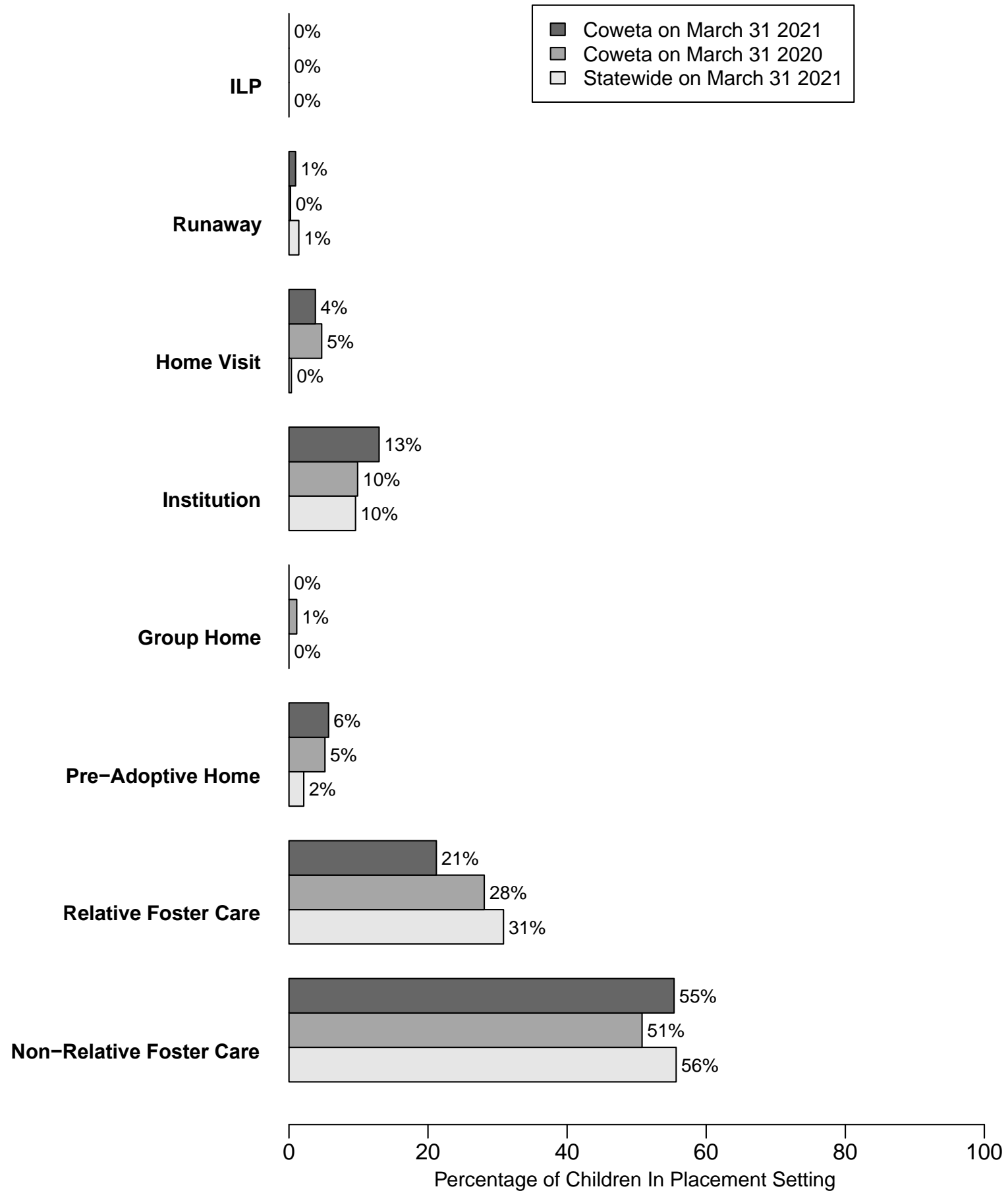


Reentries To Foster Care, 1/2020 – 12/2020

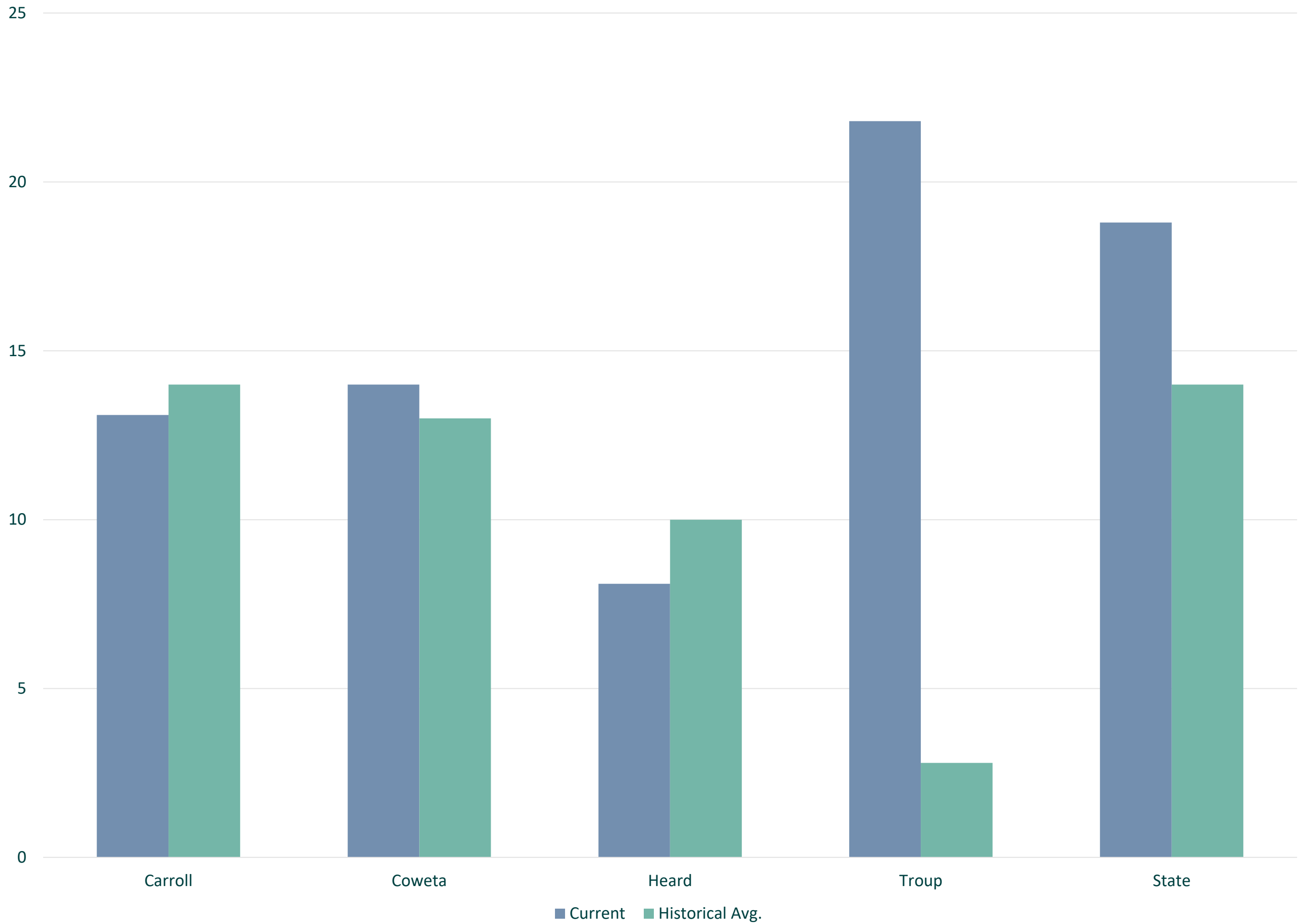


Part 3: Foster Care

Coweta Circuit: Placement Settings of Children in Care

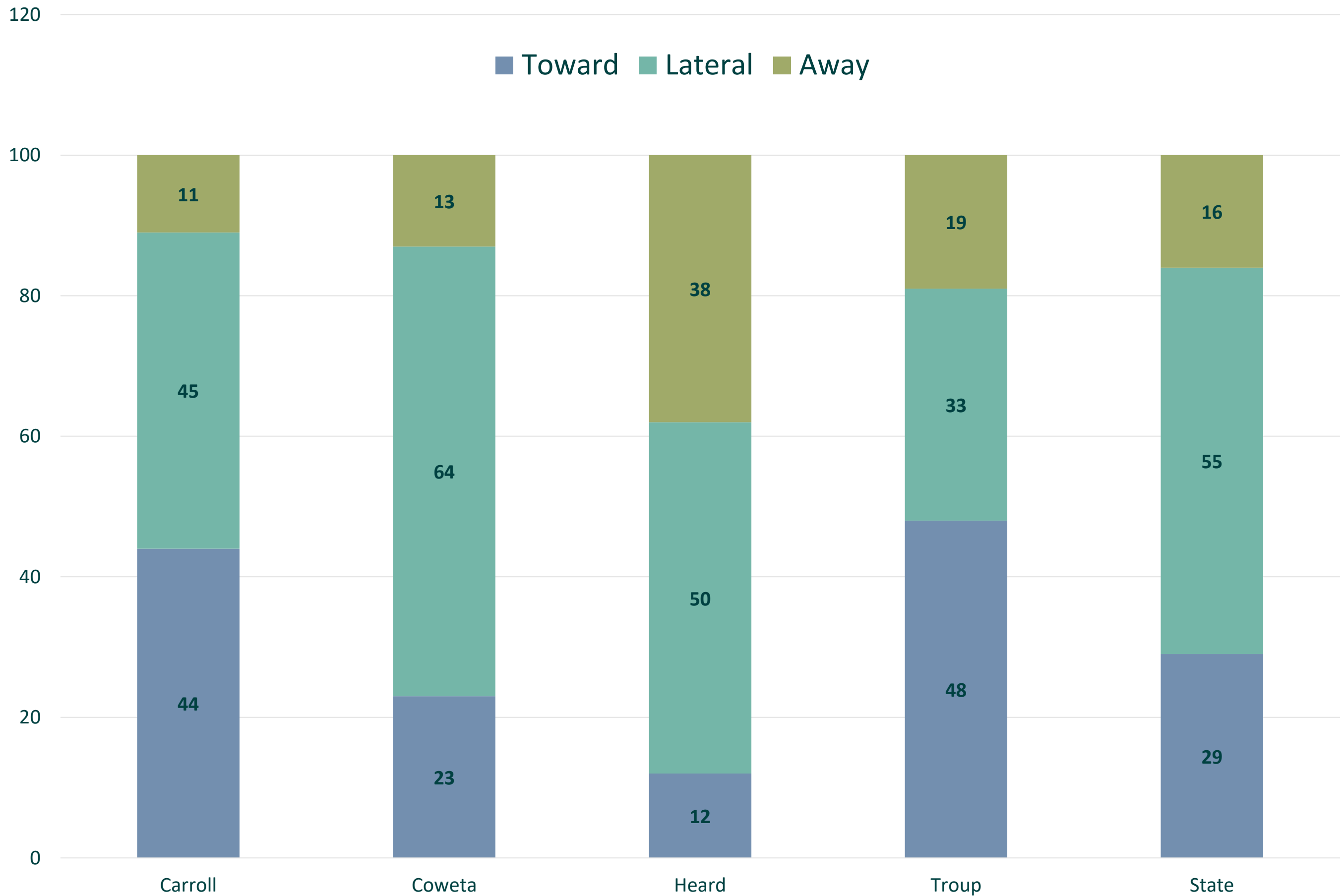


Median Length of Stay in Care



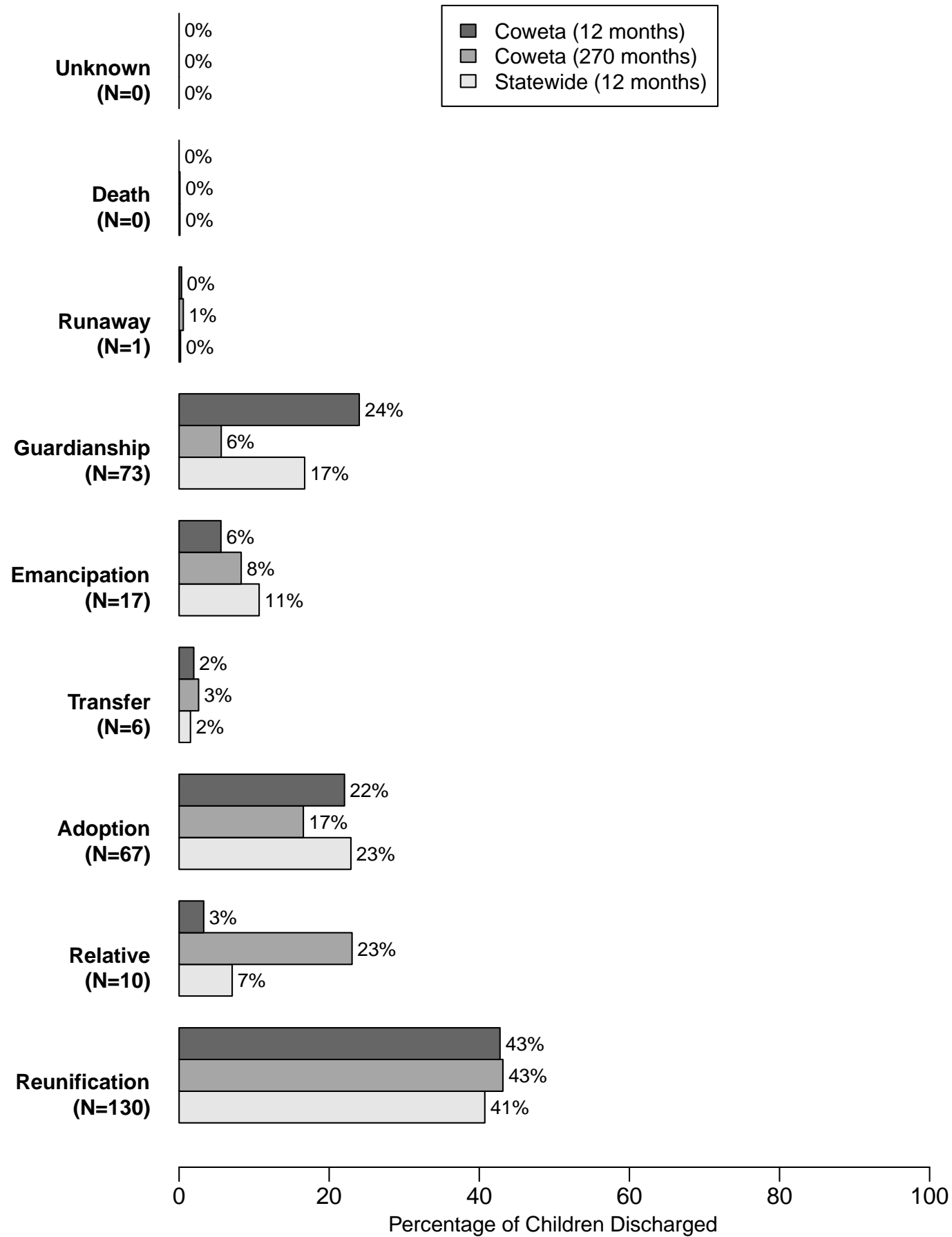
Placement Moves 4/20 - 3/21 (Percentage by Type of Move)

Toward Lateral Away



Part :4
Permanency

Coweta Circuit: Reasons for Discharge



	Carroll	Coweta	Heard	Troup	Statewide
In Care with Both TPRs on Mar. 31, 2020, Permanent within 12 Months	79%	20%	100%	100%	55%
In Non-Relative Care Over 24 Months on Mar. 31, 2021	32%	22%	0%	36%	32%
In Non-Relative Care Over 24 Months with both TPRs on Mar. 31, 2021	26%	79%	0%	62%	35%
In Care with both TPRs at Age 16, Permanency by Age 18	0%	0%	n/a	n/a	26%

Jerry Bruce
Director
Office of the Child Advocate
jbruce@oca.ga.gov

