



FEBRUARY 24 - 25, 2022

KEY OUTCOME MEASUREMENTS

Glenene Lanier, LMSW

Permanency Connection Section Director
Georgia Division of Family and Children Services

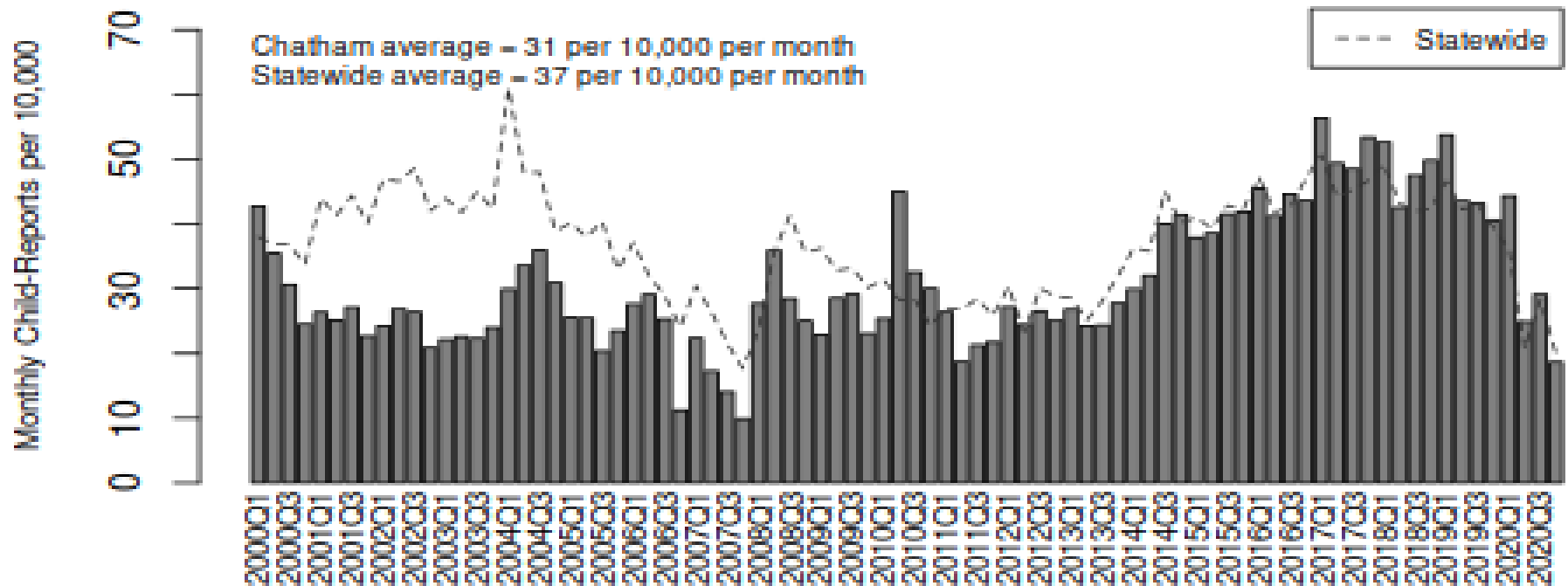
Diana Rugh Johnson, JD, CWLS

Court Improvement Program Director
Administrative Office of the Courts

REPORTS OF ABUSE/NEGLECT

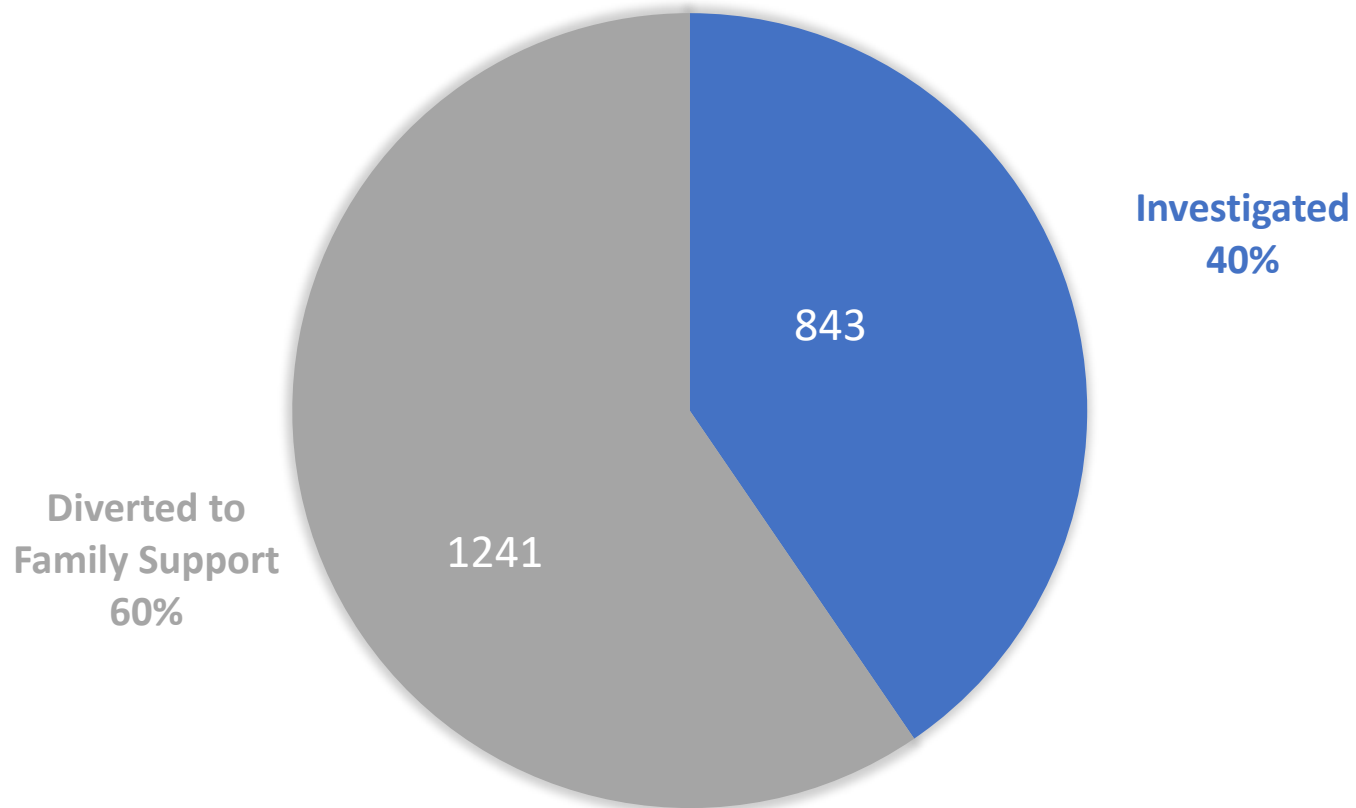
- Calendar year (CY) 2020:
 - 29/10K/month in Chatham vs. 26/10K/month in GA = +12%
- Reports rose from 2011 to 2018
 - Ignore last 3 quarters – reporting lag

Chatham County: Average Monthly Child-Reports per 10,000 Children in the Population by Quarter, January 2000 through December 2020



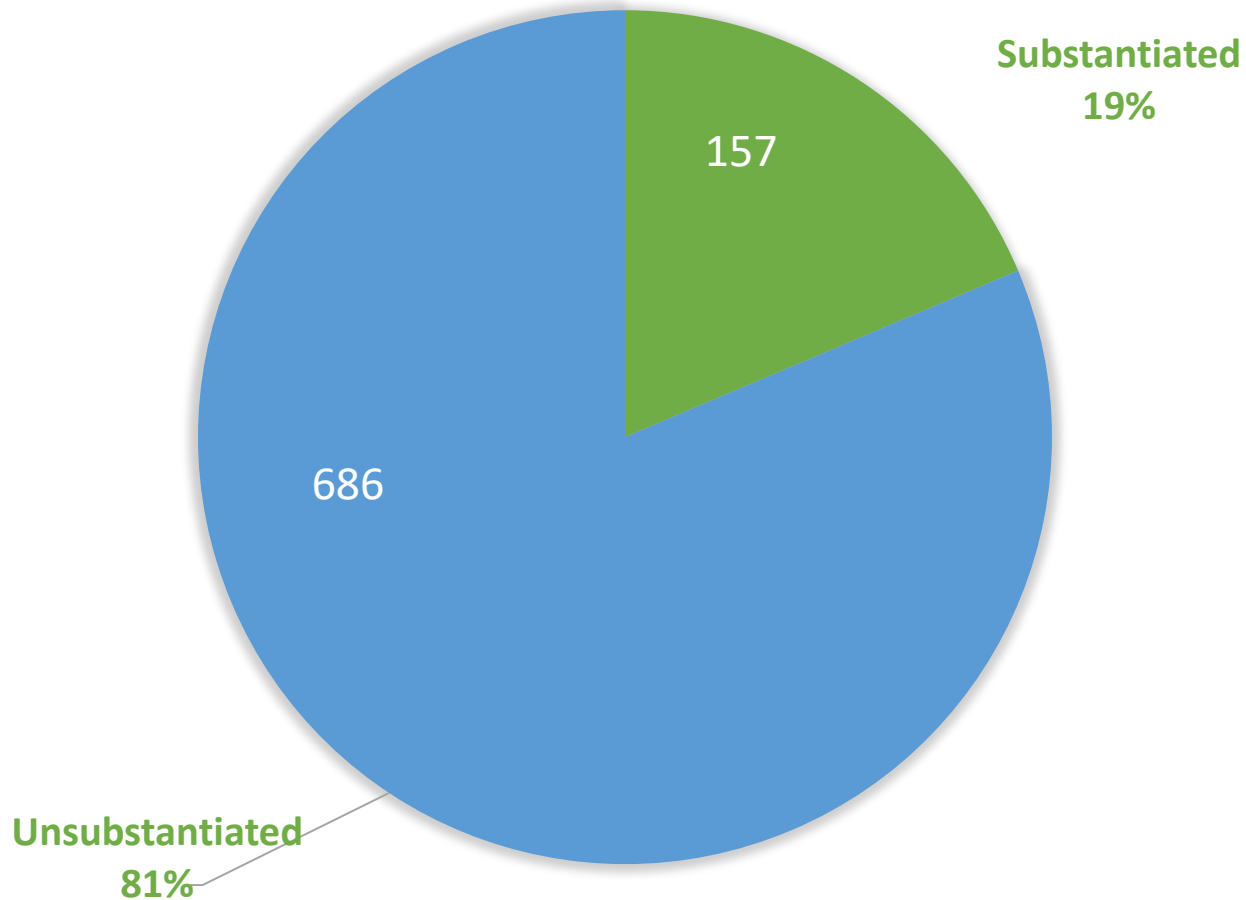
RESPONSES TO REPORTS IN CY 2020 – SIMILAR TO STATE

TOTAL REPORTS = 2084



INVESTIGATIVE FINDINGS – SIMILAR TO STATE

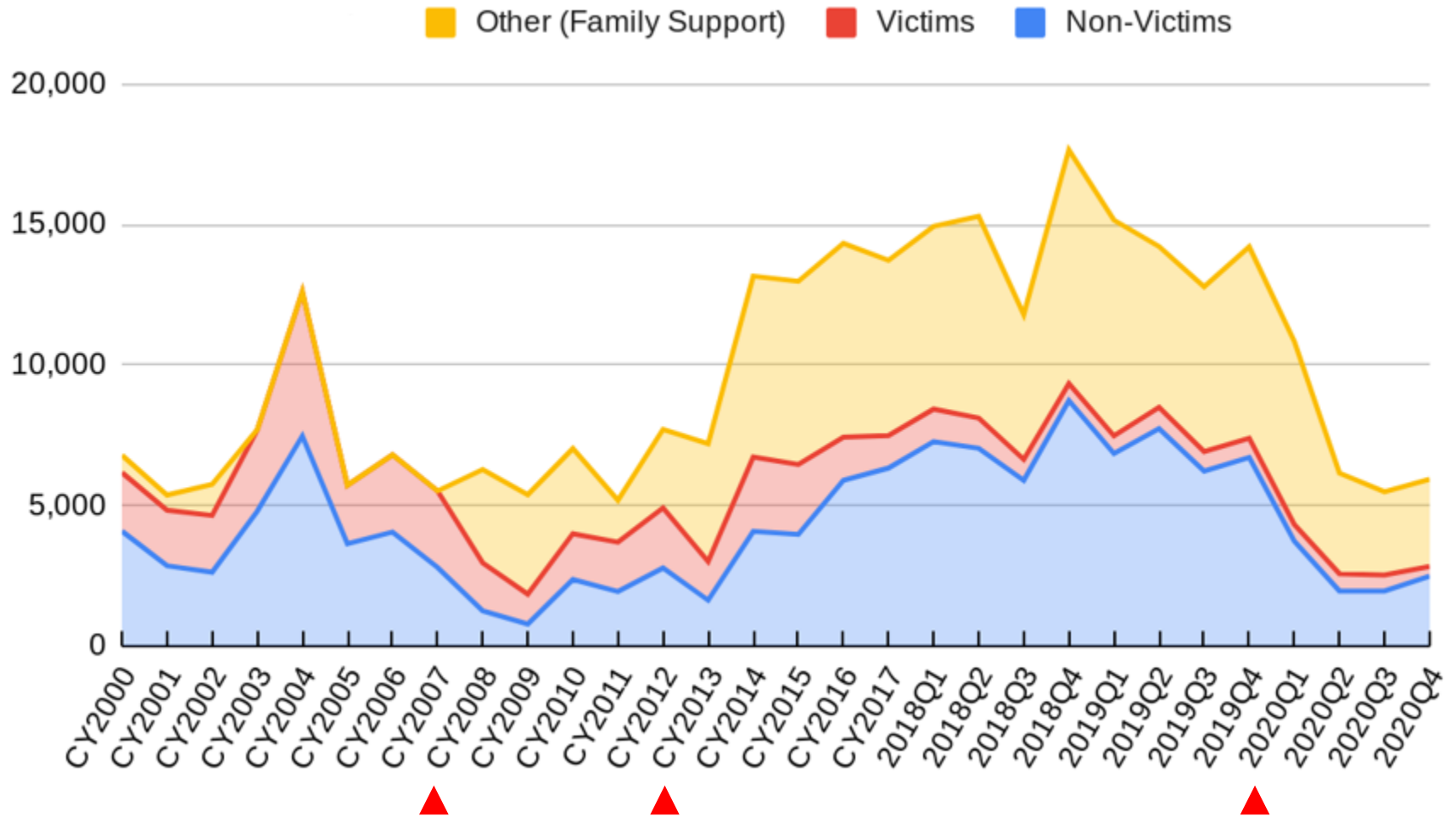
TOTAL INVESTIGATIONS = 843



MEASUREMENT: FAMILY REGULATION

- High-level “person-time” metric
- Count up ALL days that ALL children were in open CPS cases
 - Investigation or family support
 - Does NOT include days in family **preservation** cases
- We call it DAYS REGULATED or FAMILY REGULATION DAYS
- Provides a picture of families and children touched by DFCS

CHATHAM COUNTY MONTHLY FAMILY REGULATION DAYS



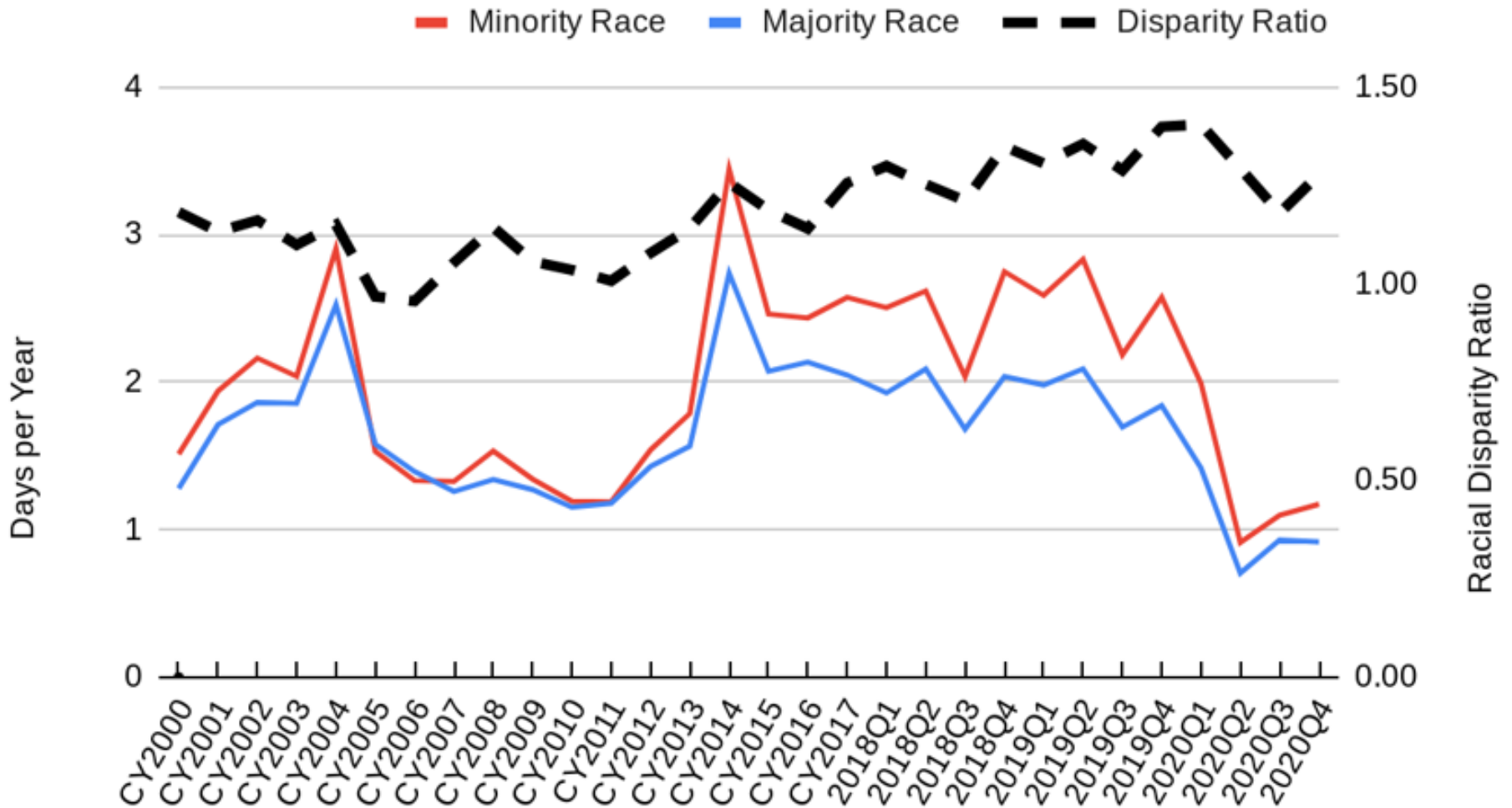
MEASUREMENT: RACIAL DISPARITY RATIO

$$a = \frac{\text{days/year that children of minority race spend in family regulation}}{\text{number of minority race children in the county}}$$

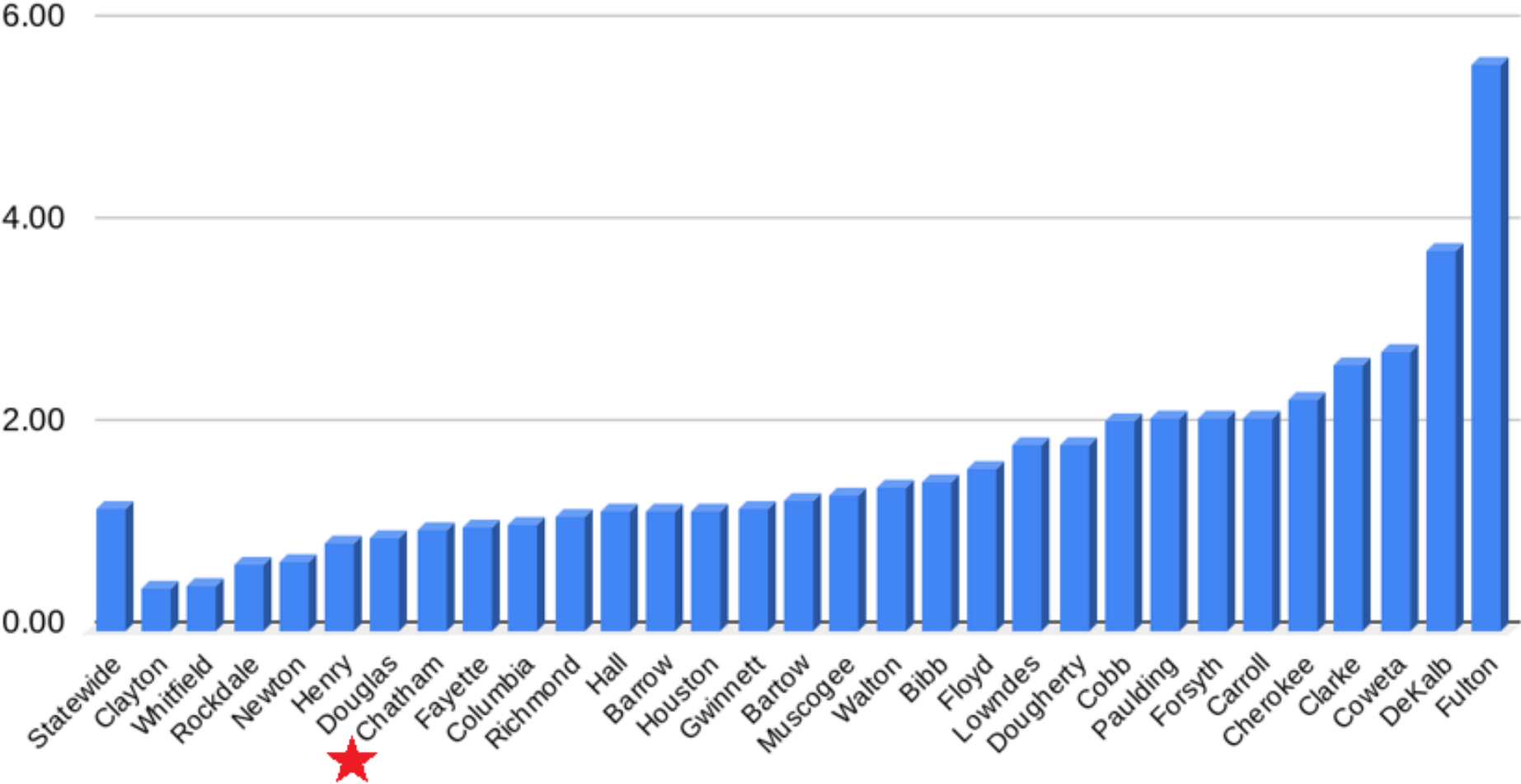
$$b = \frac{\text{days/year that children of majority race spend in family regulation}}{\text{number of majority race children in that county}}$$

$$\frac{a}{b} = \text{racial disparity ratio}$$

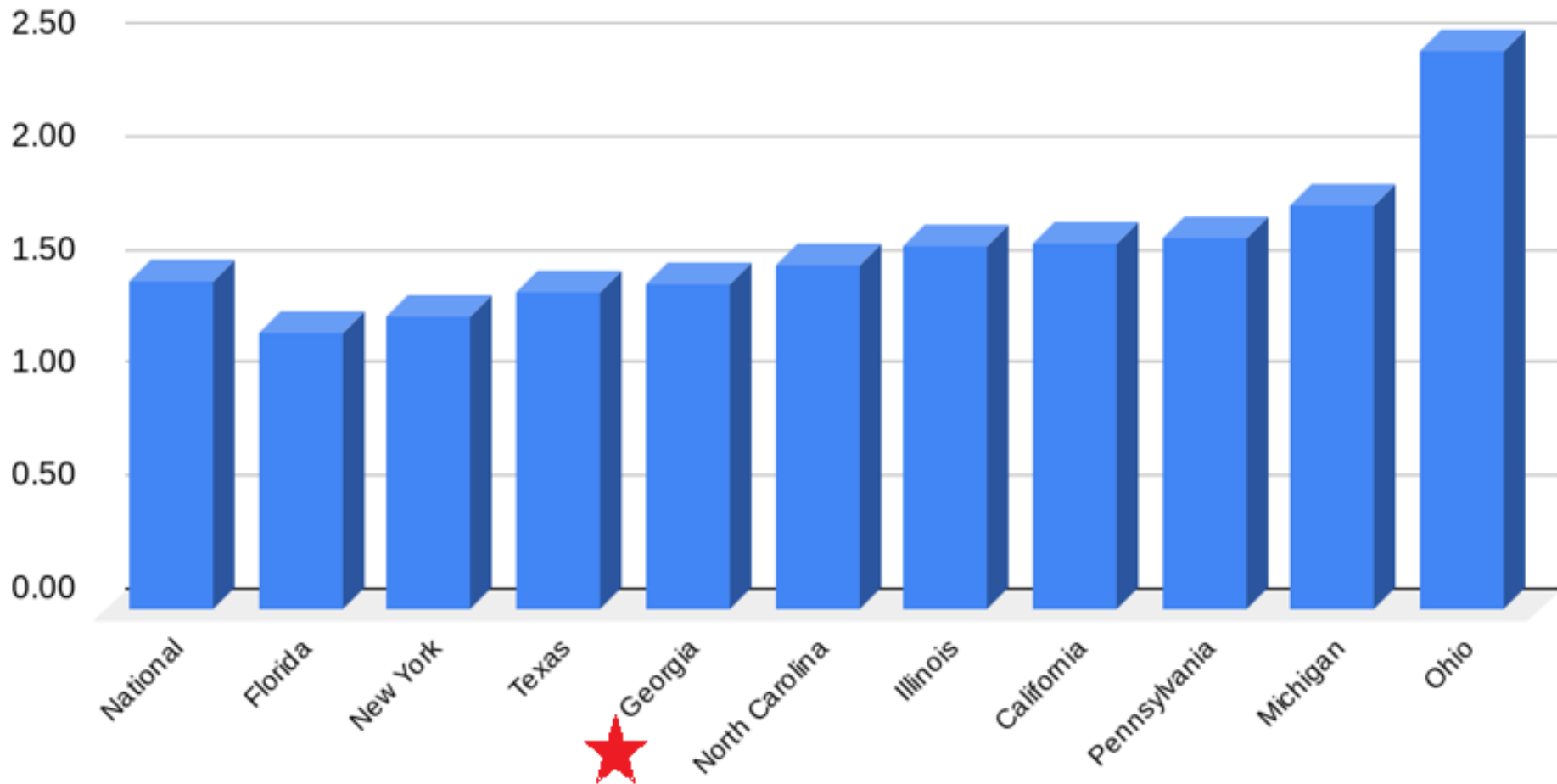
GEORGIA FAMILY REGULATION DAYS PER CHILD PER YEAR



OCTOBER 2020 – LARGE COUNTY RACIAL DISPARITY RATIO FOR DAYS UNDER FAMILY REGULATION

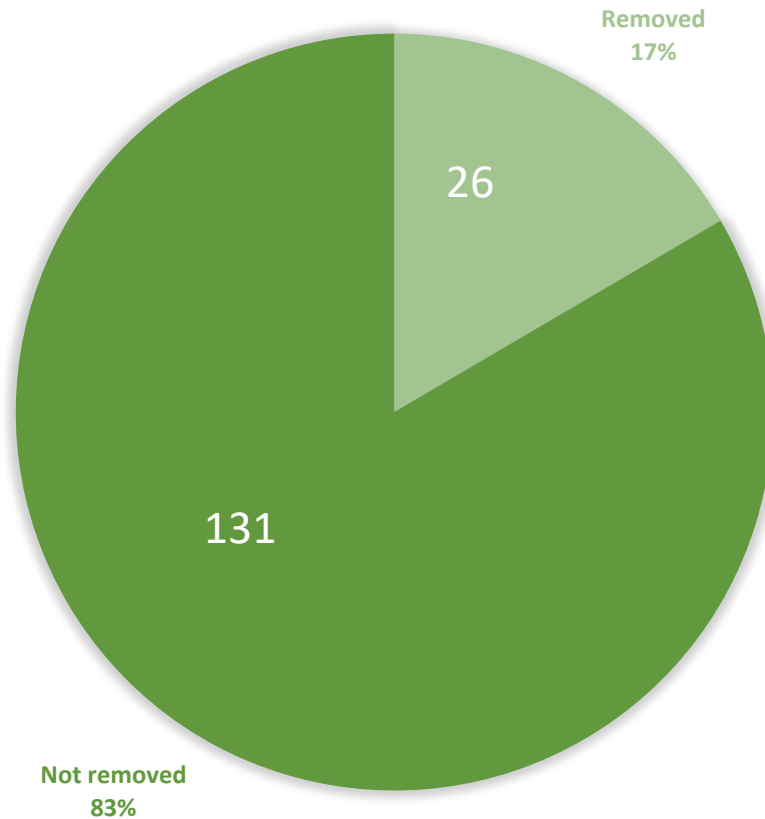


APRIL 2020 – LARGE STATE RACIAL DISPARITY RATIOS FOR DAYS UNDER FAMILY REGULATION



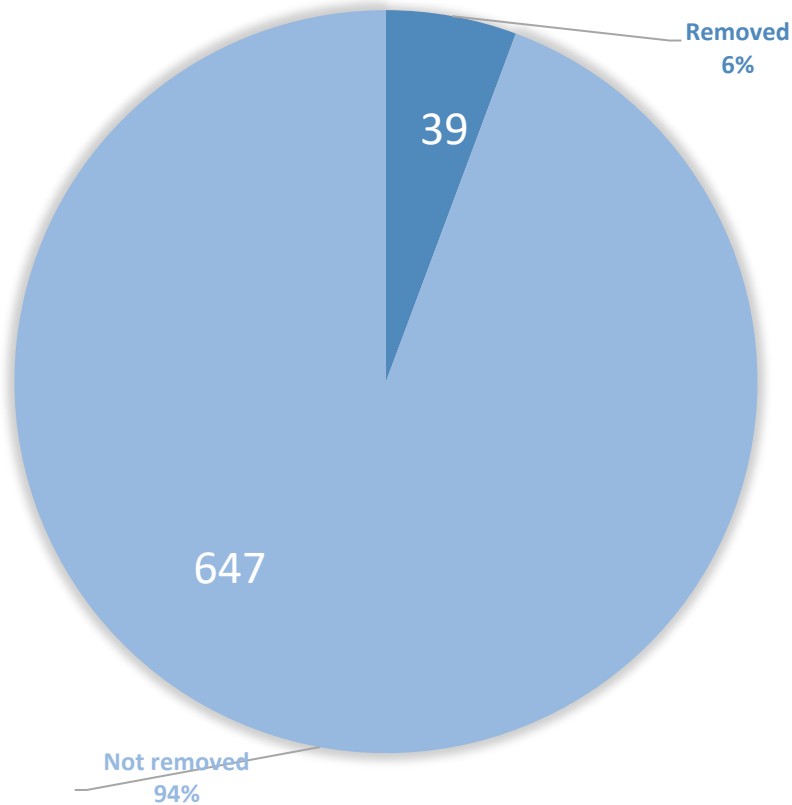
REMOVALS TO FOSTER CARE IN CY 2020 – LOWER THAN STATE

TOTAL SUBSTANTIATED = 157

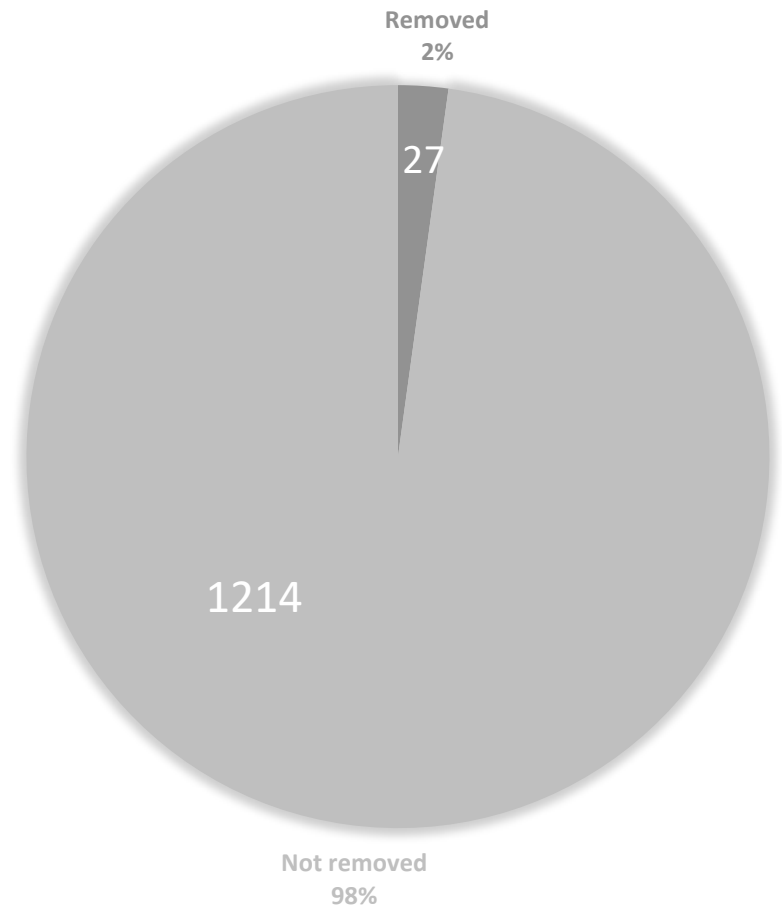


WHAT'S GOING ON HERE?

TOTAL UNSUBSTANTIATED = 686

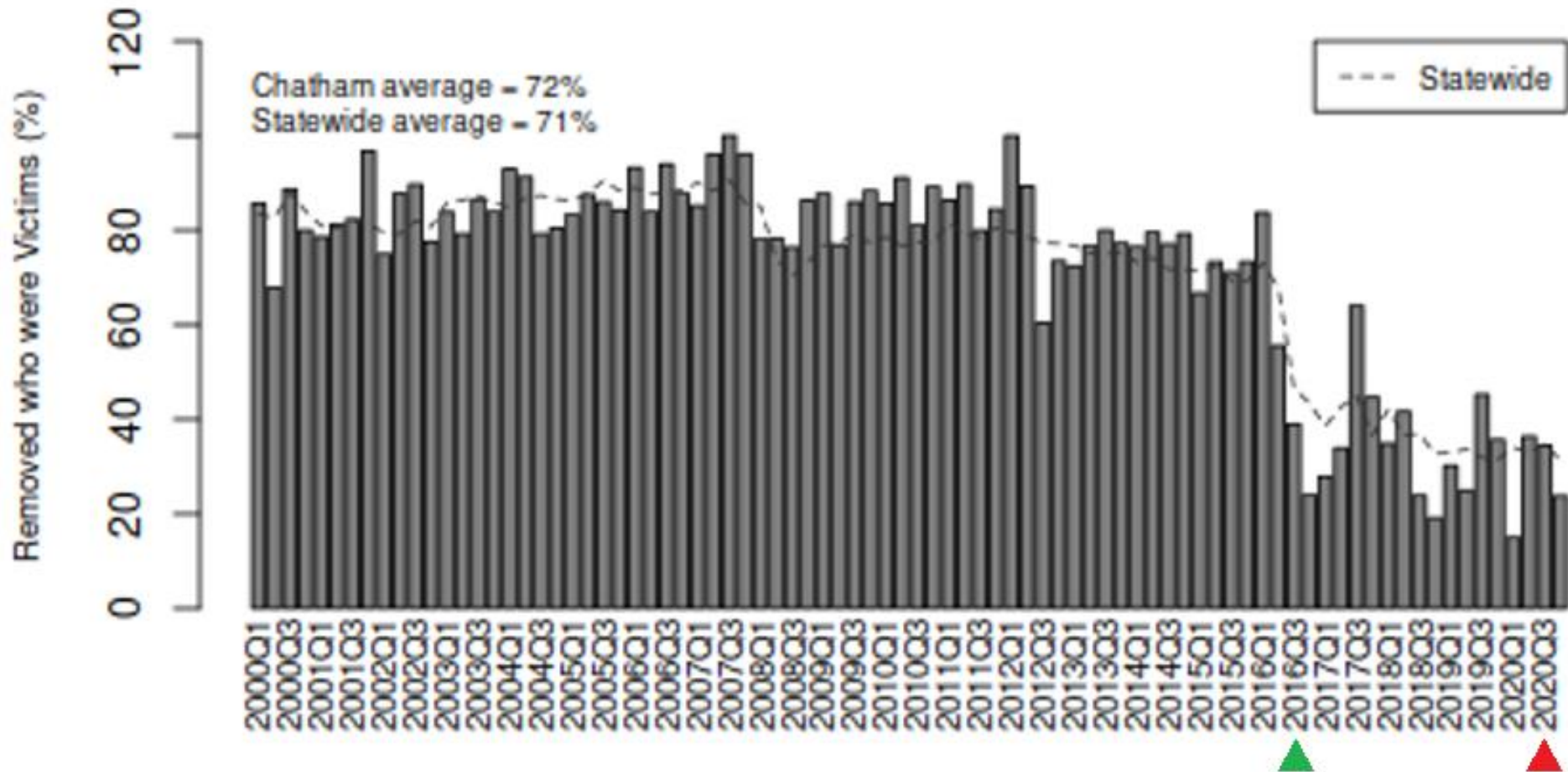


TOTAL FAMILY SUPPORT = 1241



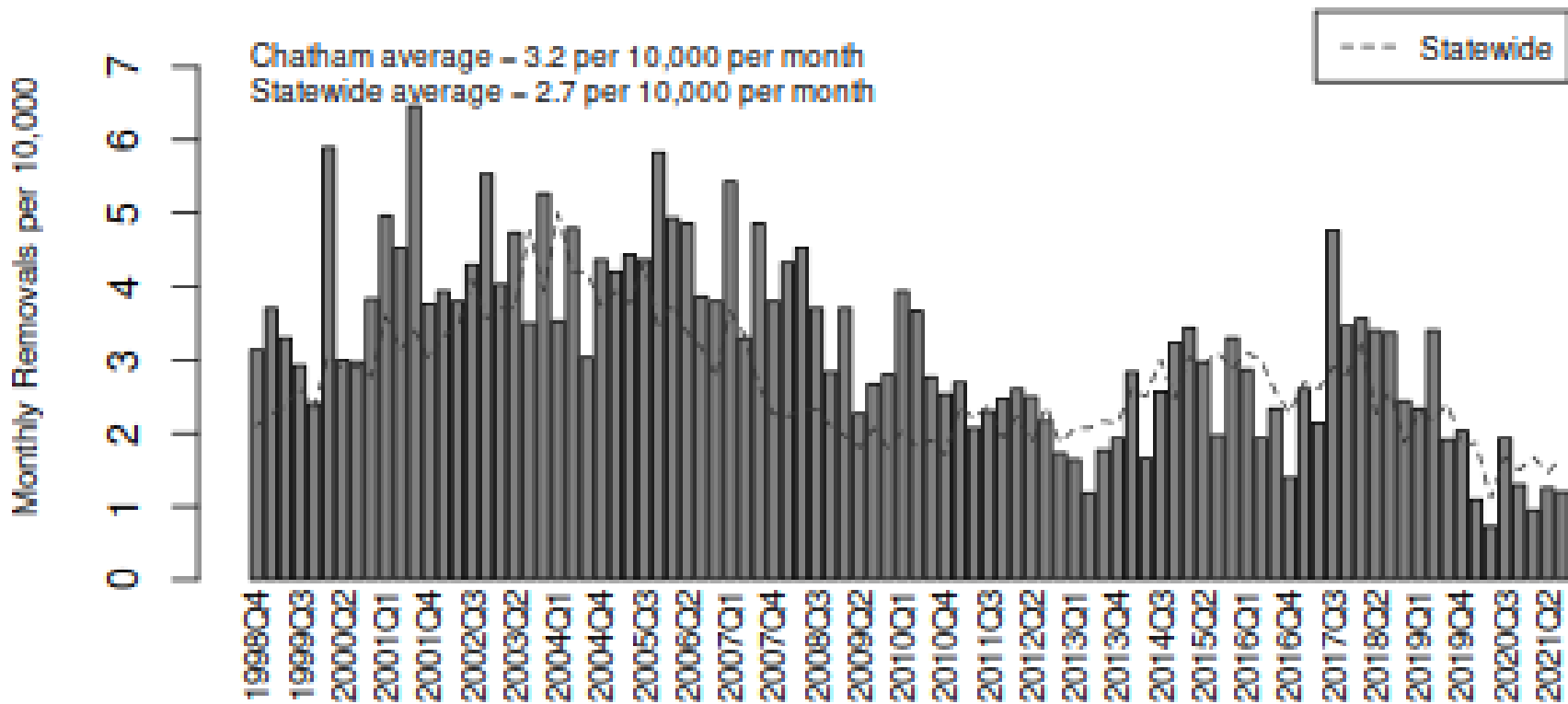
% OF CHILDREN REMOVED TO FOSTER CARE IN CY 2020 WHO WERE VICTIMS – SIMILAR TO STATE

**Chatham County: Children Removed who were Victims,
January 2000 through December 2020**



CHATHAM COUNTY REMOVALS FROM OCTOBER 1998 TO SEPTEMBER 2021 – HIGHER THAN STATE

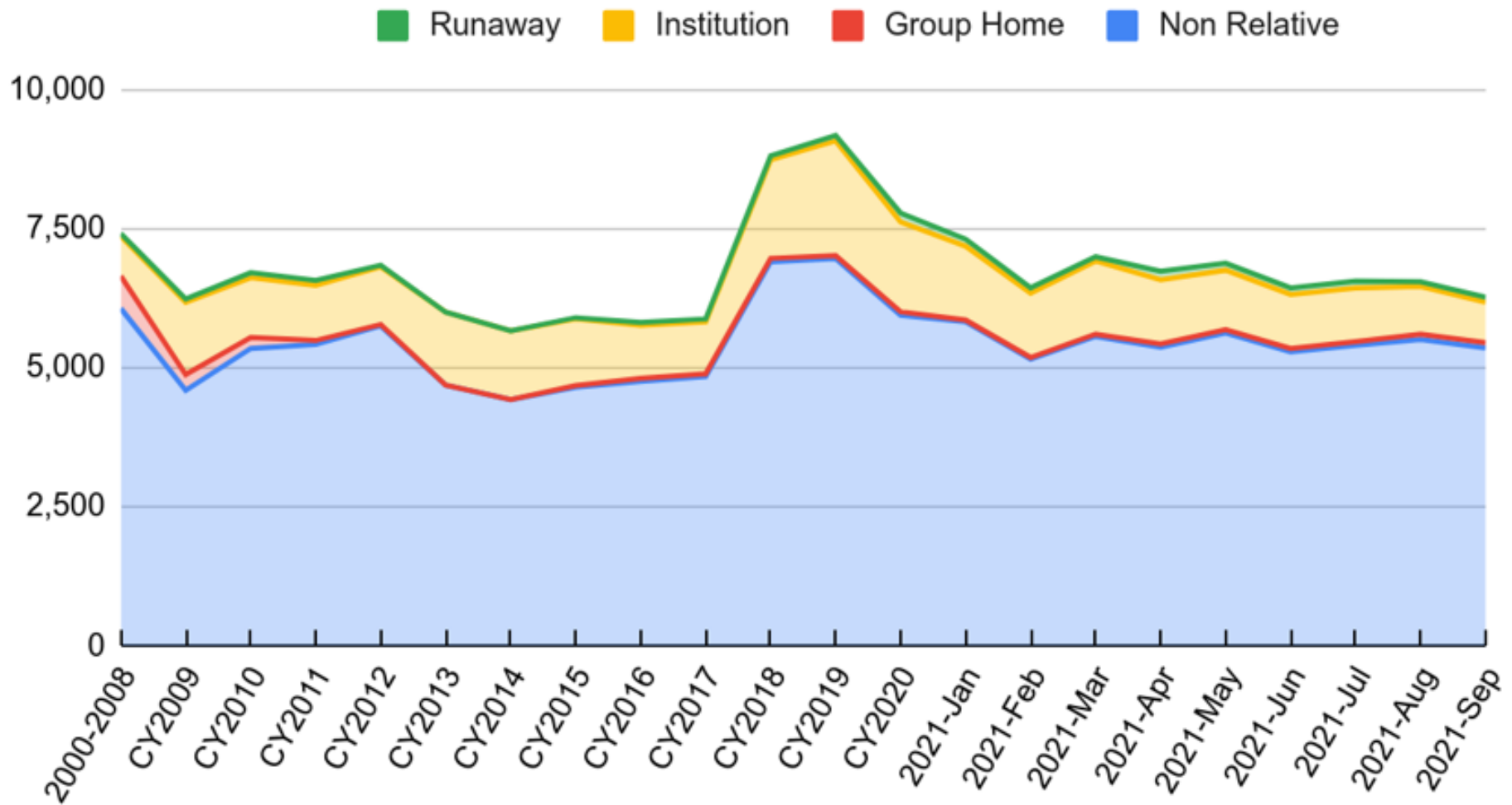
Chatham County: Average Monthly Removals per 10,000 Children in the Population by Quarter, October 1998 through September 2021



MEASUREMENT: DAYS SEPARATED FROM FAMILY

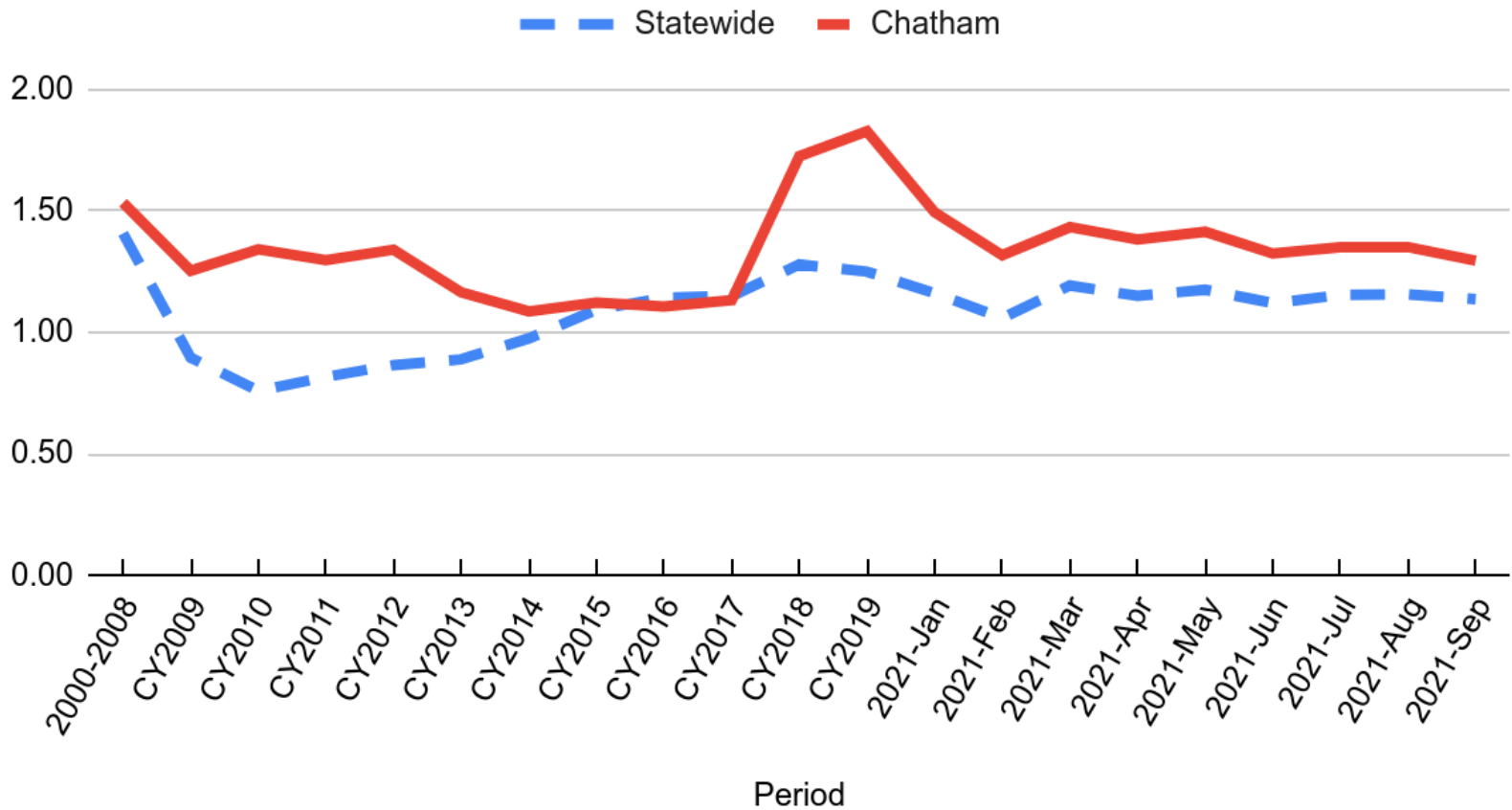
- Another “person-time” metric
- Count up ALL days that ALL children in foster care were in non-family placements
 - Non-relative foster care, congregate care, runaway, or ILP placement
- We call it DAYS SEPARATED FROM FAMILY or FAMILY SEPARATION DAYS

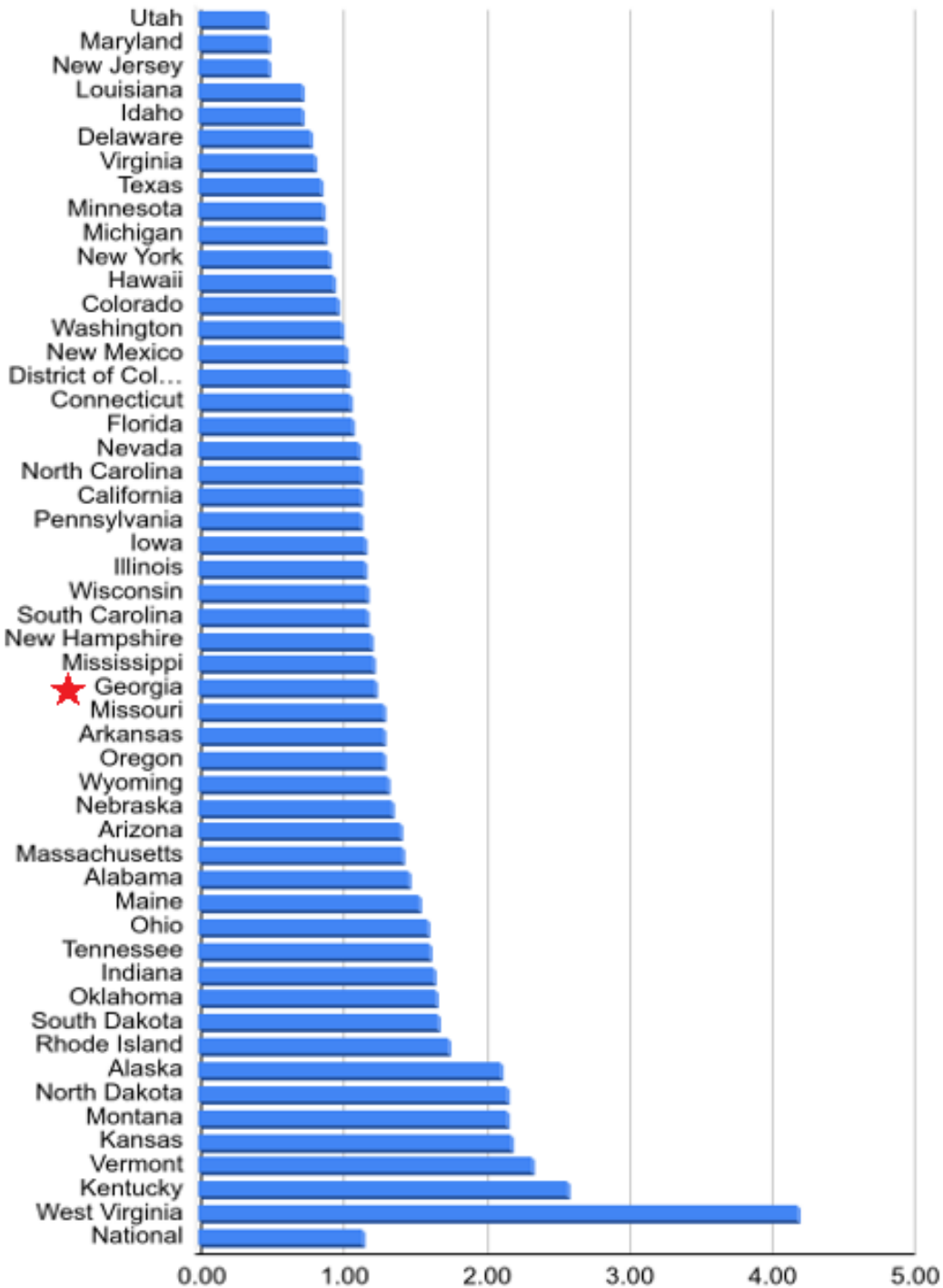
STATEWIDE DAYS PER MONTH SEPARATED FROM FAMILY IN CY 2000 - 2021



AVERAGE ANNUAL DAYS SEPARATED FROM FAMILY PER CHILD IN CY 2000 - 2021

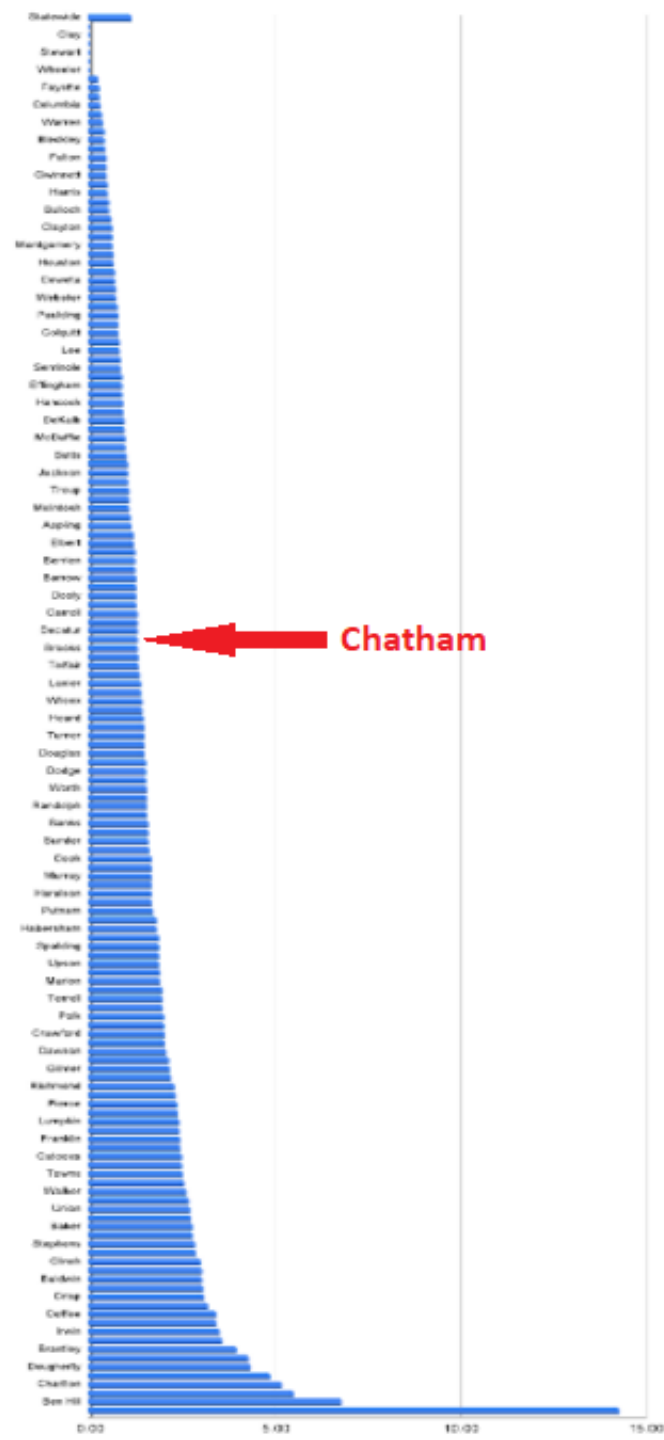
GA: Average Annual Days Separated per Child in Region



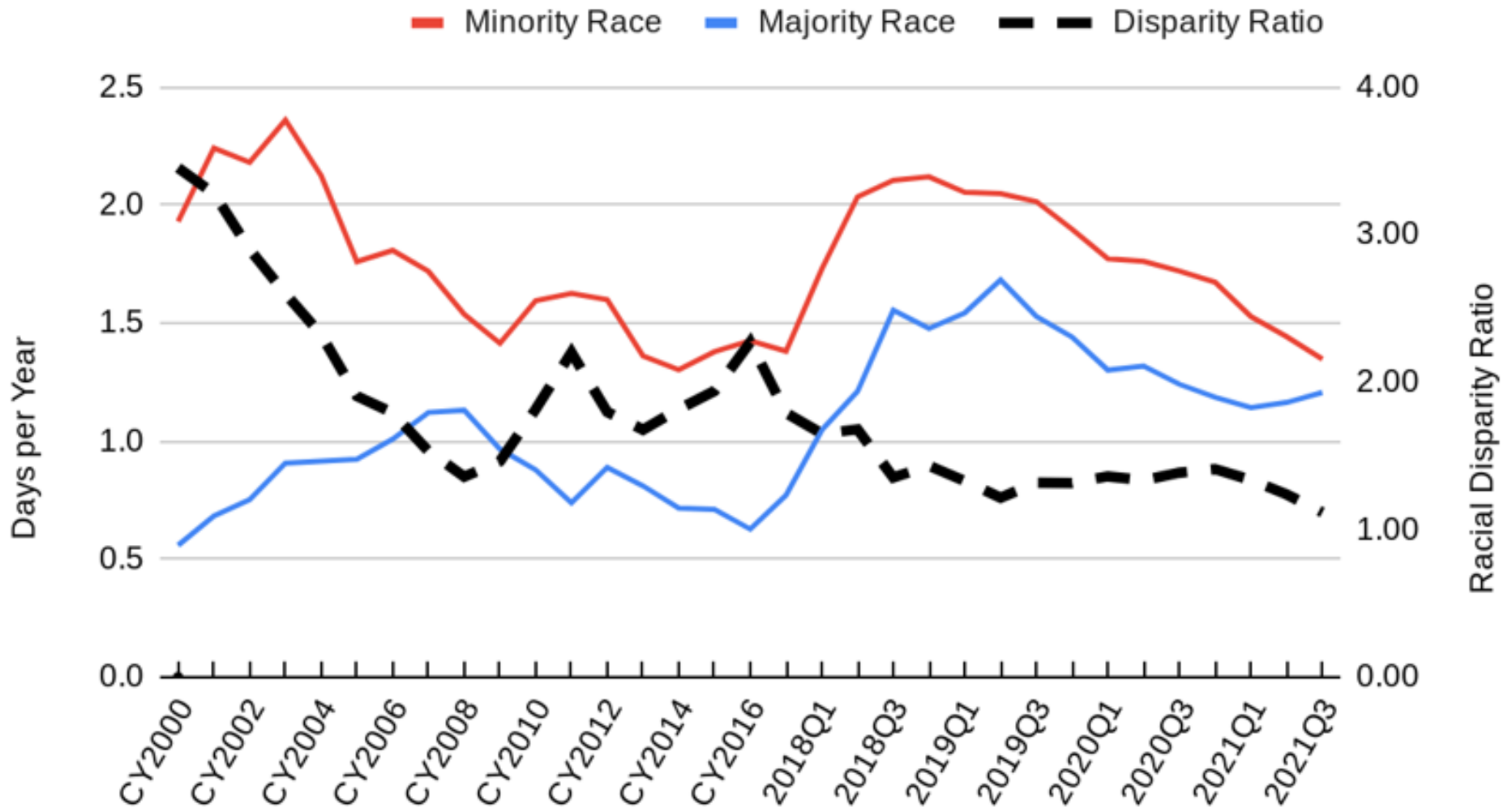


AVERAGE DAYS SEPARATED FROM FAMILY IN FY 2020

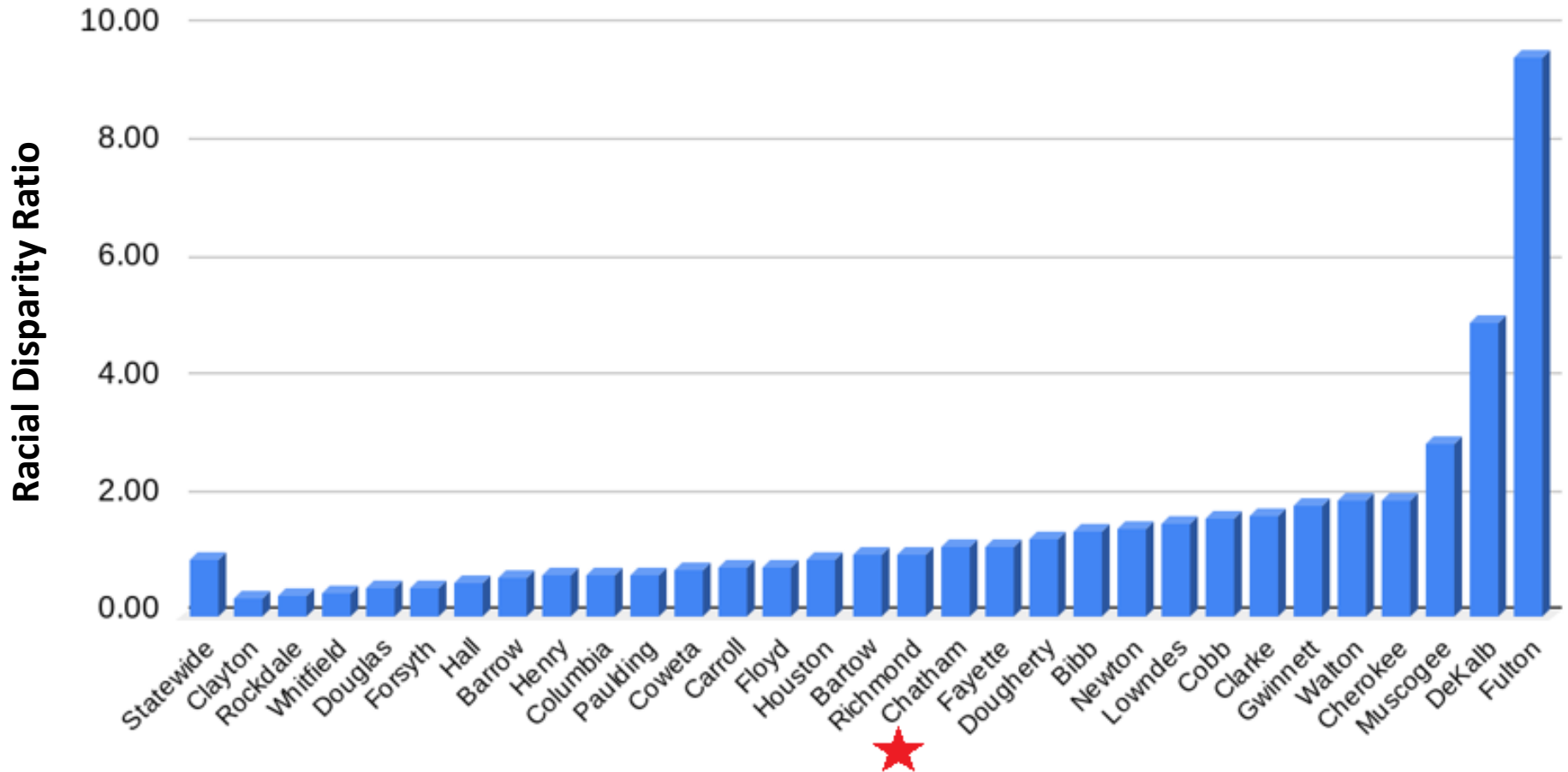
AVERAGE DAYS SEPARATED FROM FAMILY IN SEPTEMBER 2021



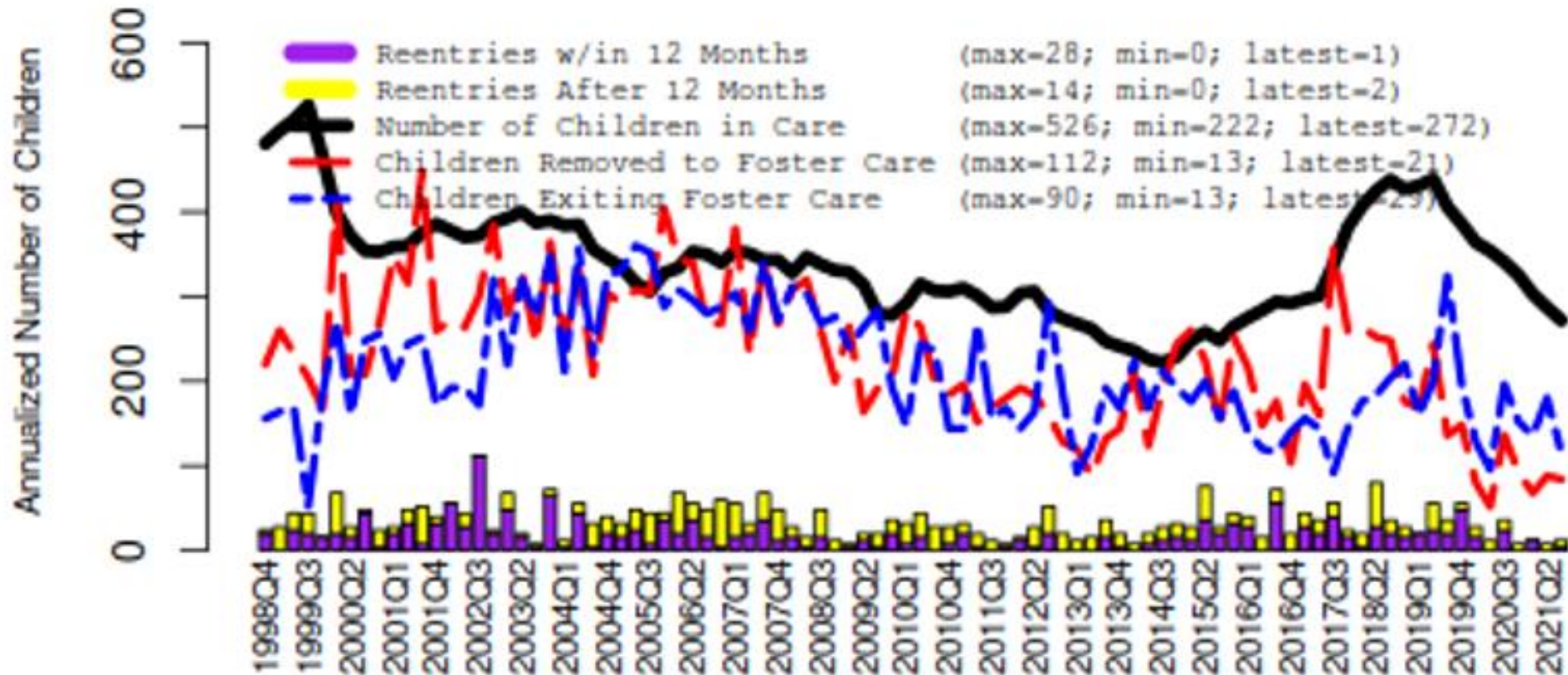
CHATHAM COUNTY DAYS SEPARATED FROM FAMILY PER CHILD PER YEAR



LARGE COUNTY COMPARISON – OCTOBER 2020



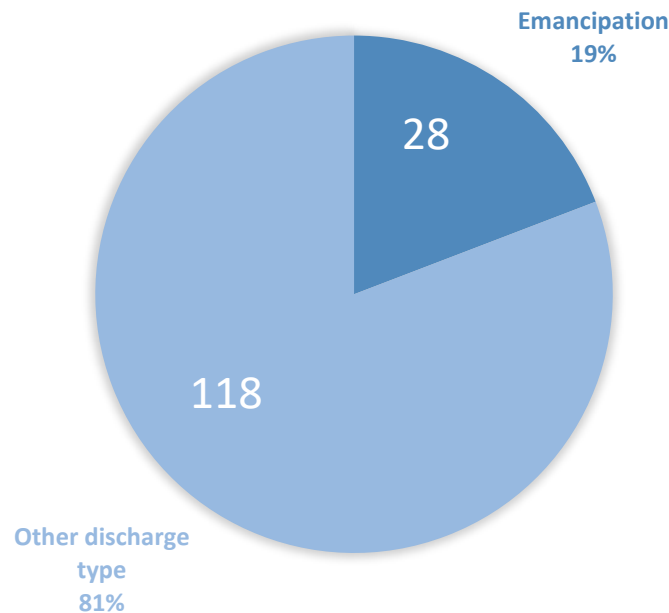
CHATHAM COUNTY FOSTER CARE DYNAMICS – OCTOBER 1998 TO SEPTEMBER 2021



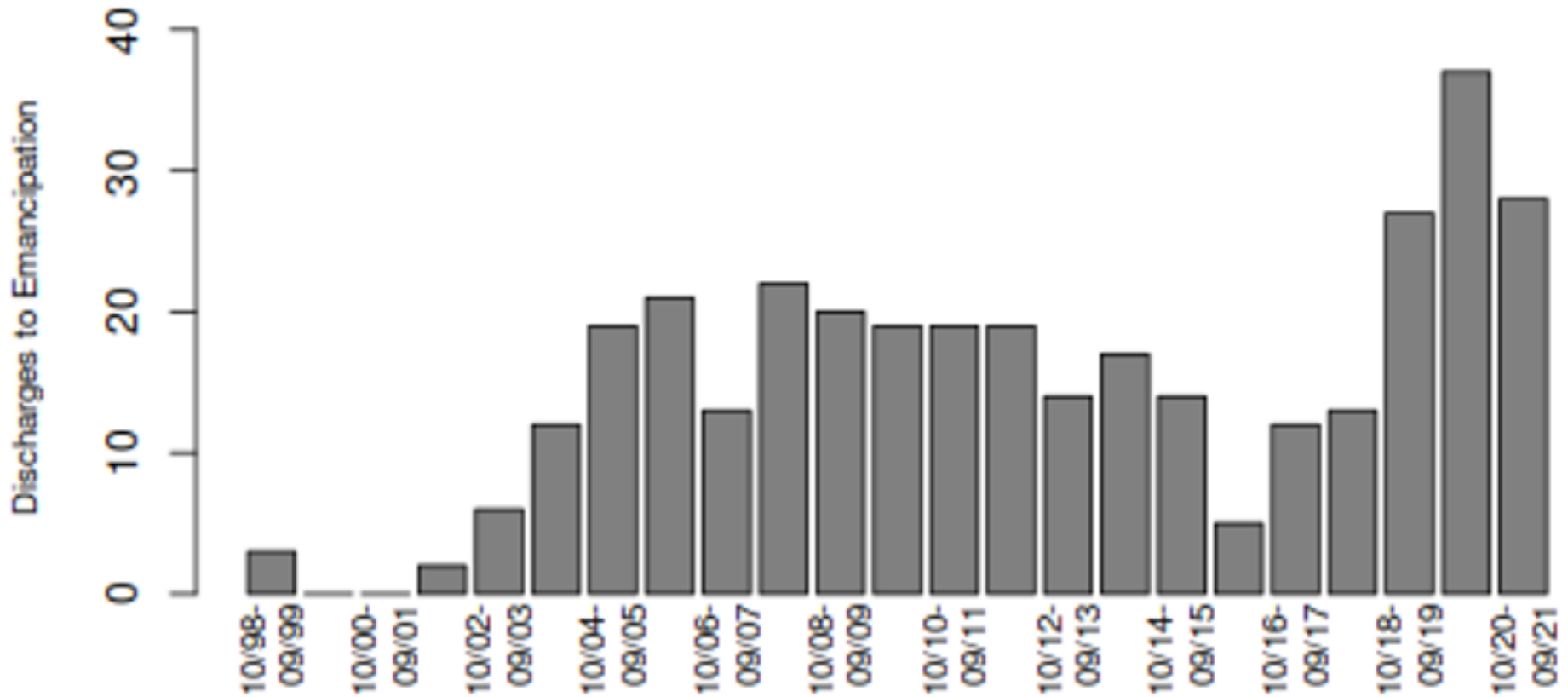
CHATHAM COUNTY EXITS FROM FOSTER CARE – FFY 2021

- Zero discharges to runaway!
- One post-TPR youth emancipated
- Emancipation rate higher than state rate of 11%

TOTAL EXITS FROM FOSTER CARE = 146

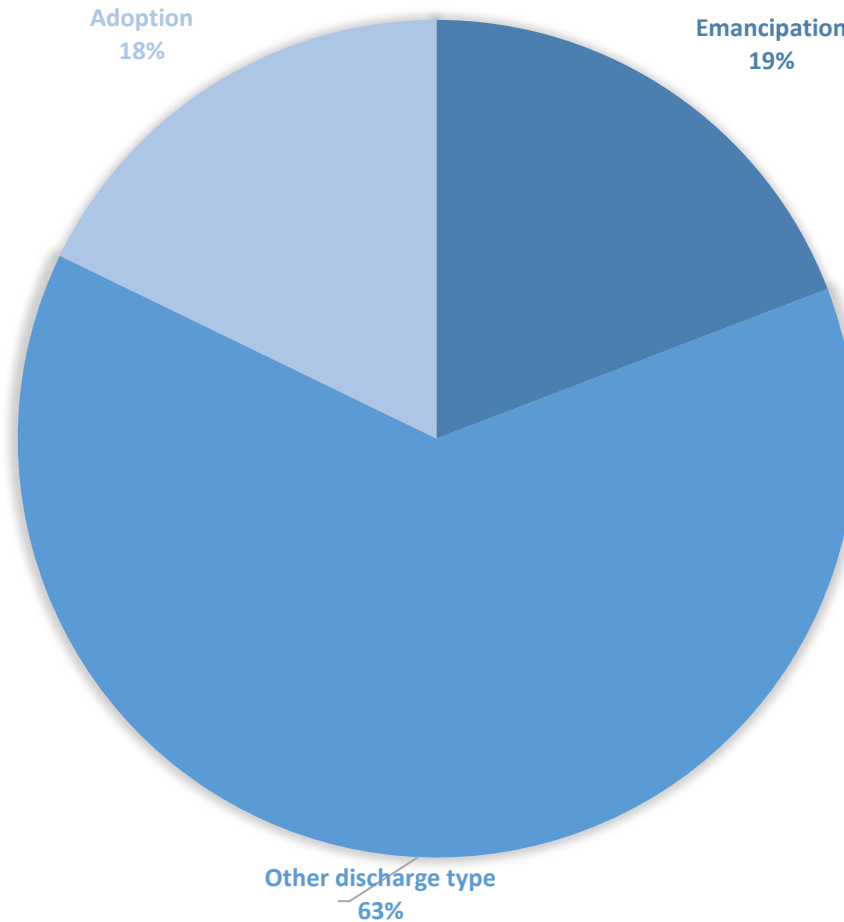


CHATHAM COUNTY DISCHARGES TO EMANCIPATION FROM OCTOBER 1998 – SEPTEMBER 2021

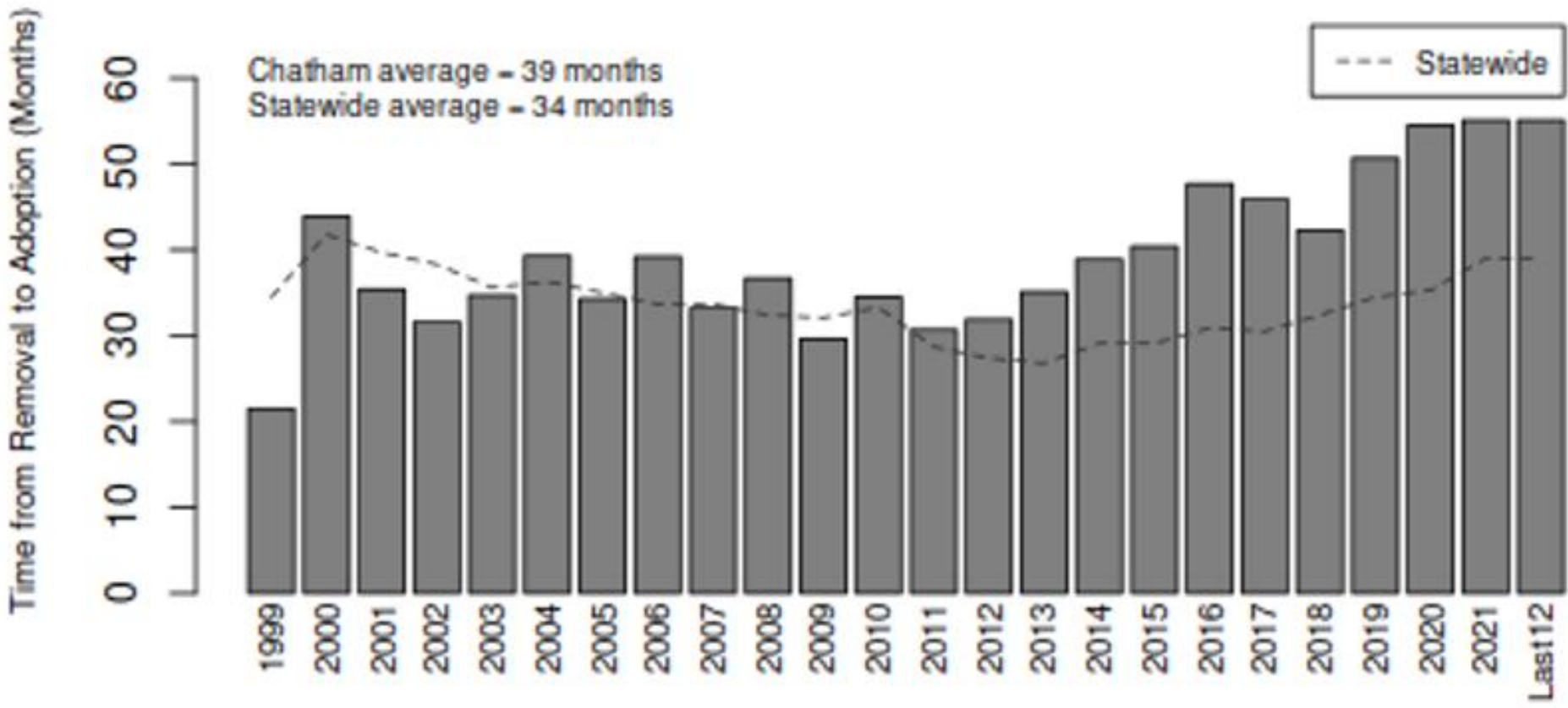


CHATHAM COUNTY ADOPTION DISCHARGE RATE — FY 2021

TOTAL EXITS FROM FOSTER CARE = 146



CHATHAM COUNTY MEDIAN MONTHS FROM REMOVAL TO ADOPTION



QUESTIONS?