

Georgia's Multi-Disciplinary Child Abuse and Neglect Institute Training

May 19-20, 2022

Holiday Inn Atlanta-Infinite Energy Center
6310 Sugarloaf Parkway
Duluth, GA 30097



MD CANI
GEORGIA'S MULTI-DISCIPLINARY
CHILD ABUSE AND NEGLECT
INSTITUTE

KEY OUTCOME MEASUREMENTS

Diana Rugh Johnson, JD, CWLS
Court Improvement Program Director
Administrative Office of the Courts

Kelsey Prezioso
C3 Coordinator – Region 13
Georgia Division of Family and Children Services

WELCOME TO MD CANI

Metro District

- Gwinnett
- Clayton
- Cobb
- DeKalb
- Fulton



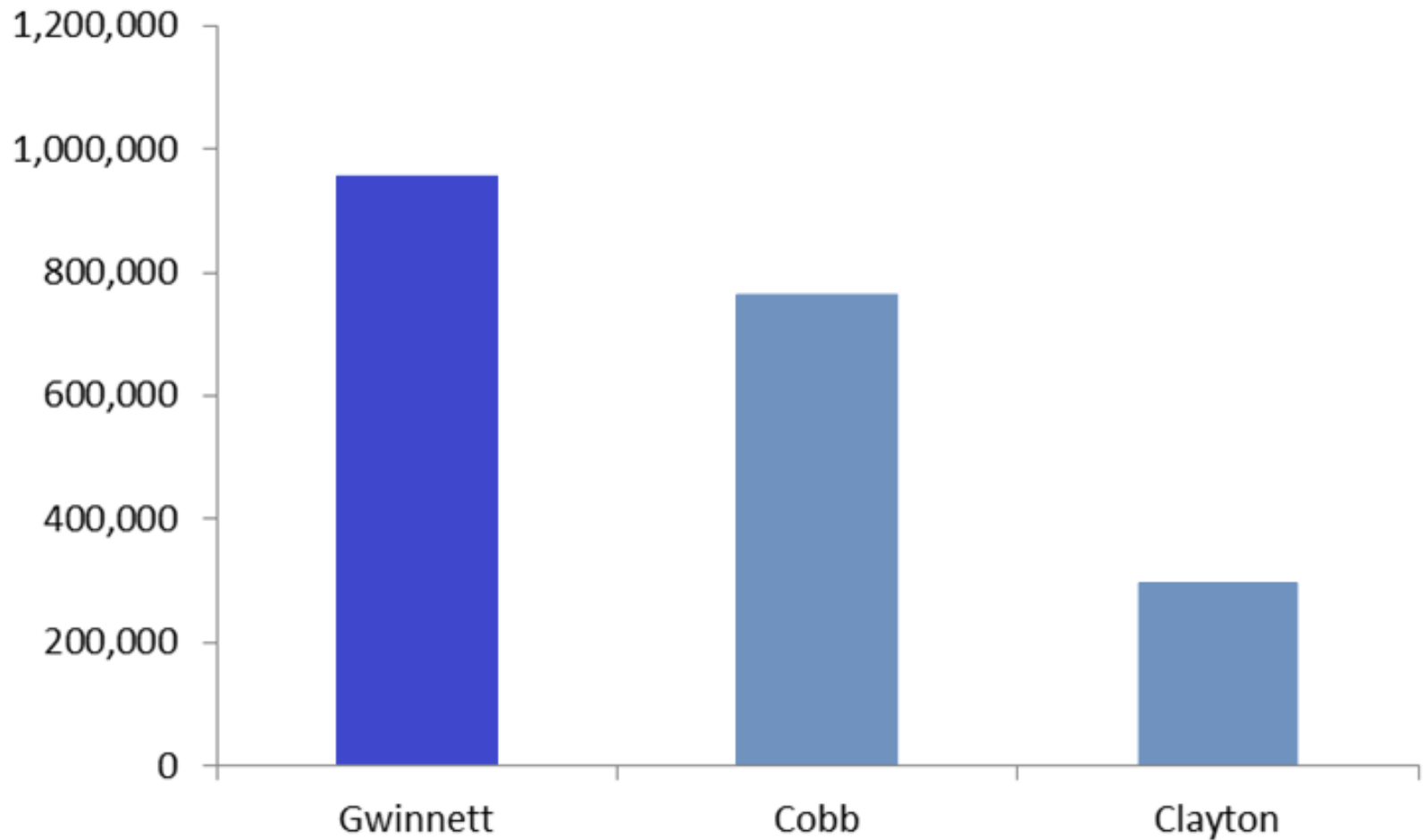
DFCS Region 13

- Gwinnett
- Cobb
- Clayton



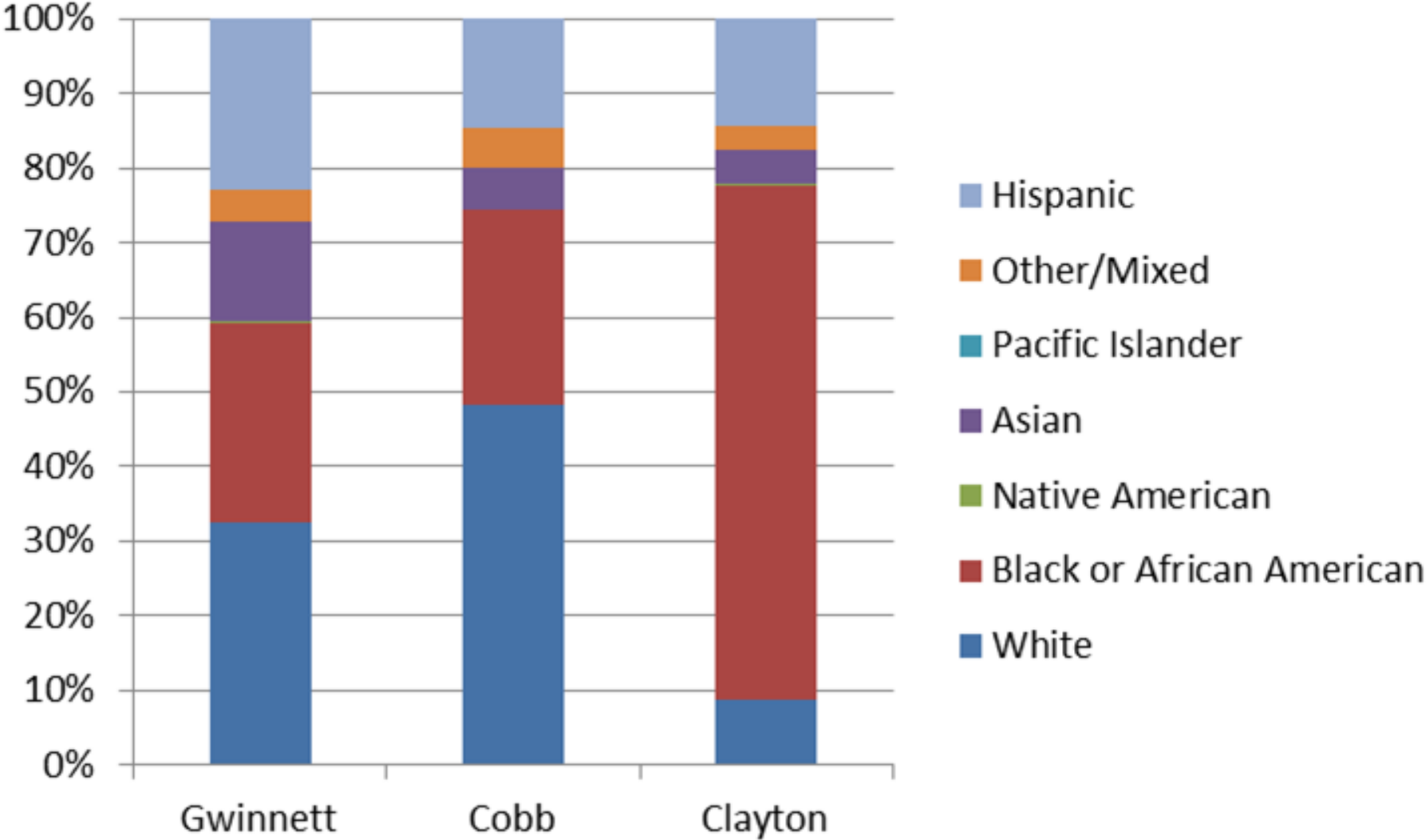
POPULATION

2020 CENSUS

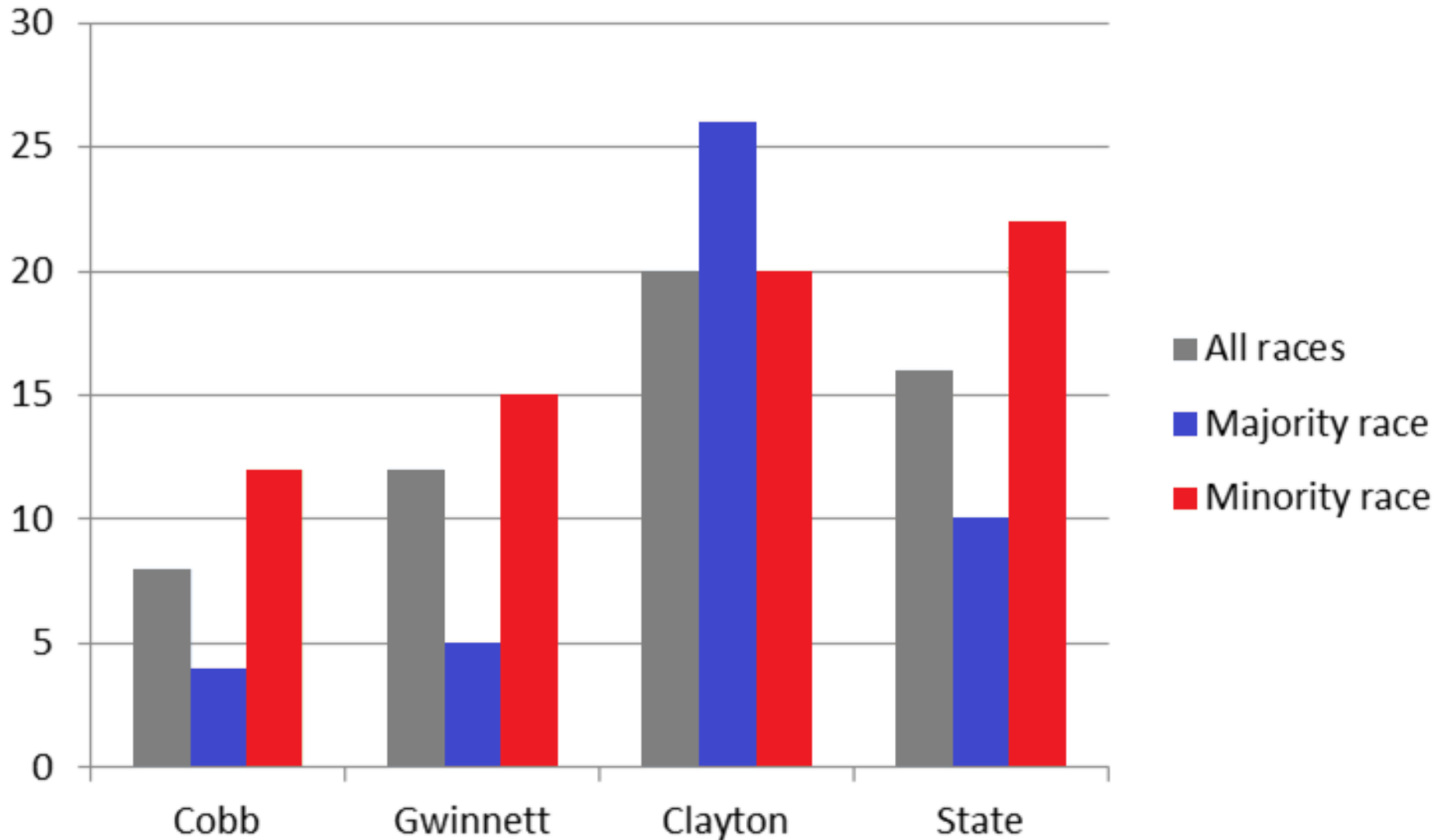


POPULATION OVERVIEW

2020 CENSUS



PERCENTAGE OF FAMILIES WITH CHILDREN LIVING BELOW POVERTY LINE 2020 CENSUS



FOSTERING COURT IMPROVEMENT

www.fosteringcourtimprovement.org

...anything worth doing is worth measuring...



about us	
partners	
getting started	
data tools	
state websites	
resources	

Welcome to Fostering Court Improvement ♦ a non-profit organization dedicated to the philosophy that "*anything worth doing is worth measuring*".

Fostering Court Improvement is committed to provide every state in the nation a platform of shared data that the Dependency Court and Child Welfare Agency can collaboratively use to make informed decisions, manage operations, monitor performance, and make systemic changes to improve outcomes for children and families.

We invite you to [review our mission](#), learn more about the [data we provide](#), and [join us](#) in our commitment to improved outcomes for children and families.



[about us](#) | [court benefits](#) | [agency benefits](#) | [staff](#)

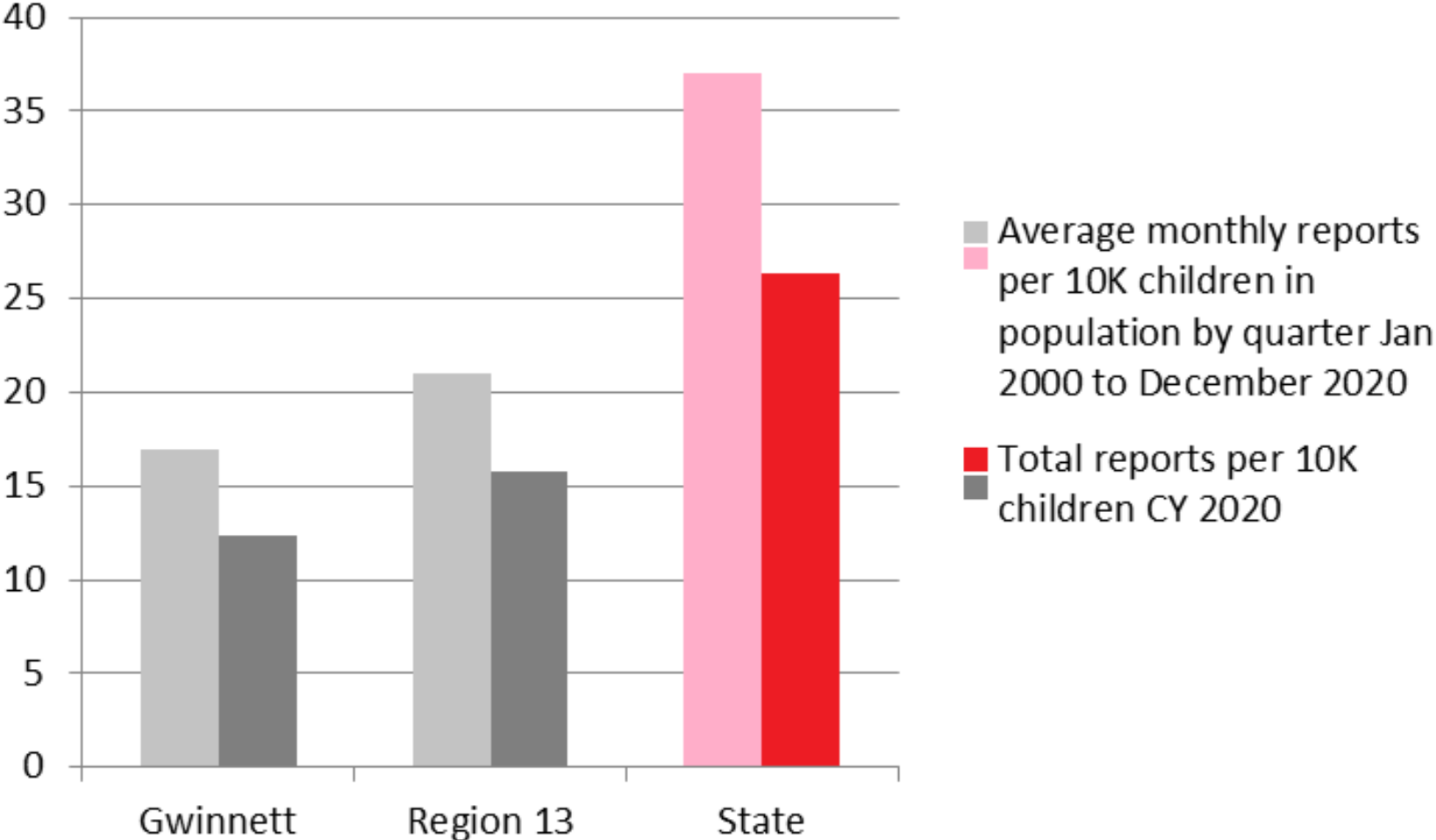
[contact us](#)

Web site design © 2022 [Relevant Arts](#)

Reports of Maltreatment

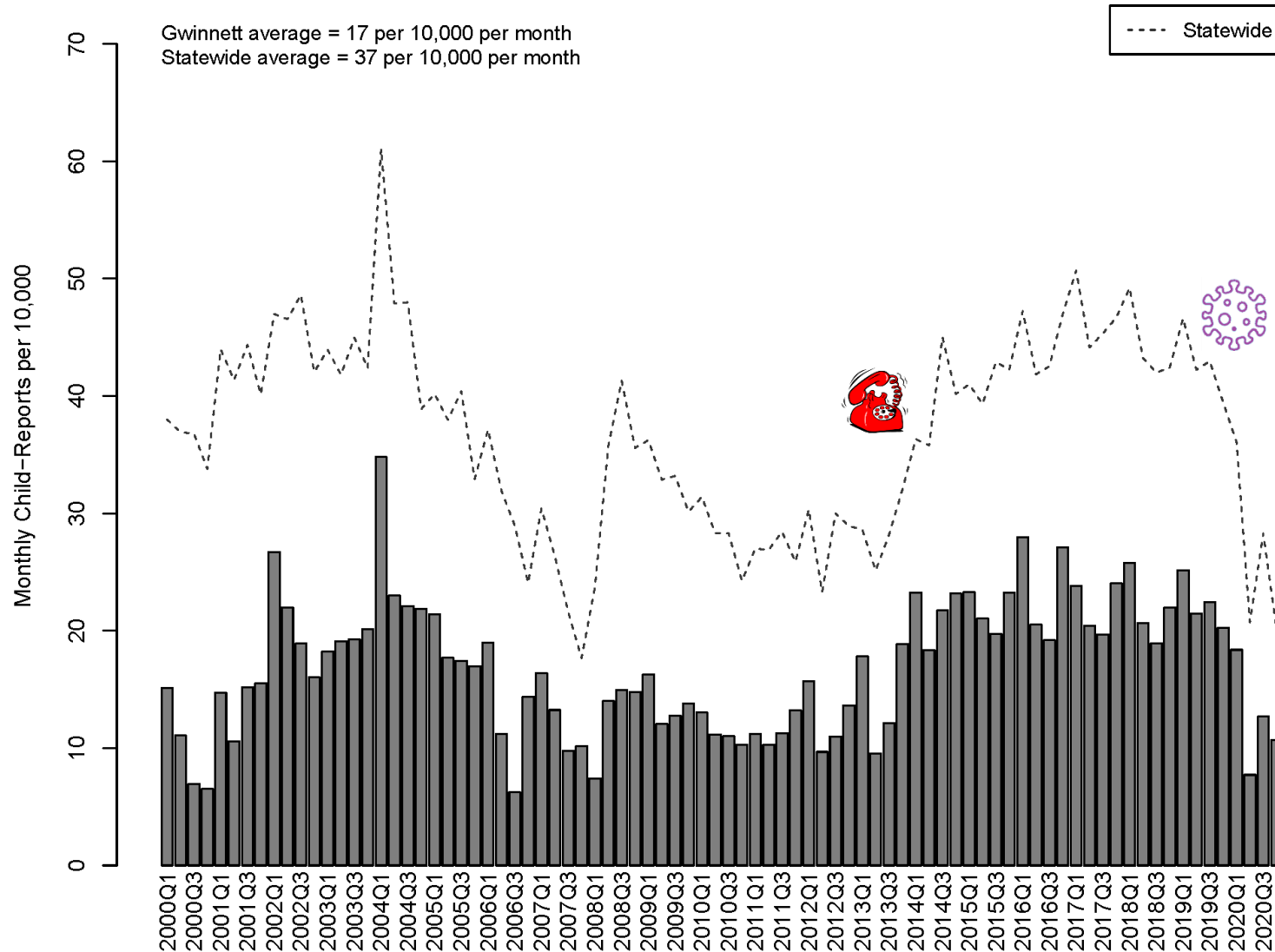
CPS

REPORTS OF MALTREATMENT

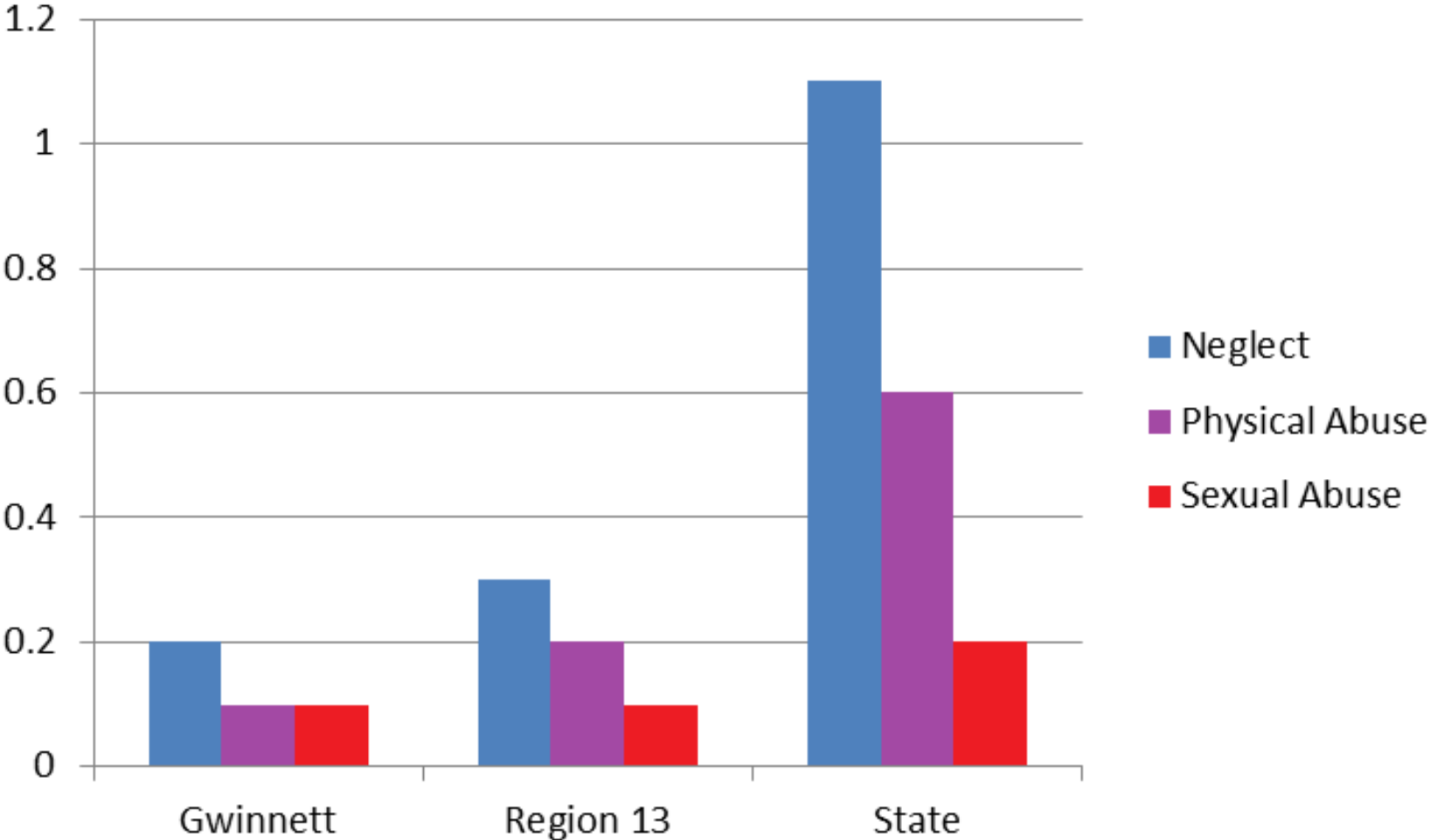


GWINNETT REPORTS OF MALTREATMENT

January 2000 through December 2020



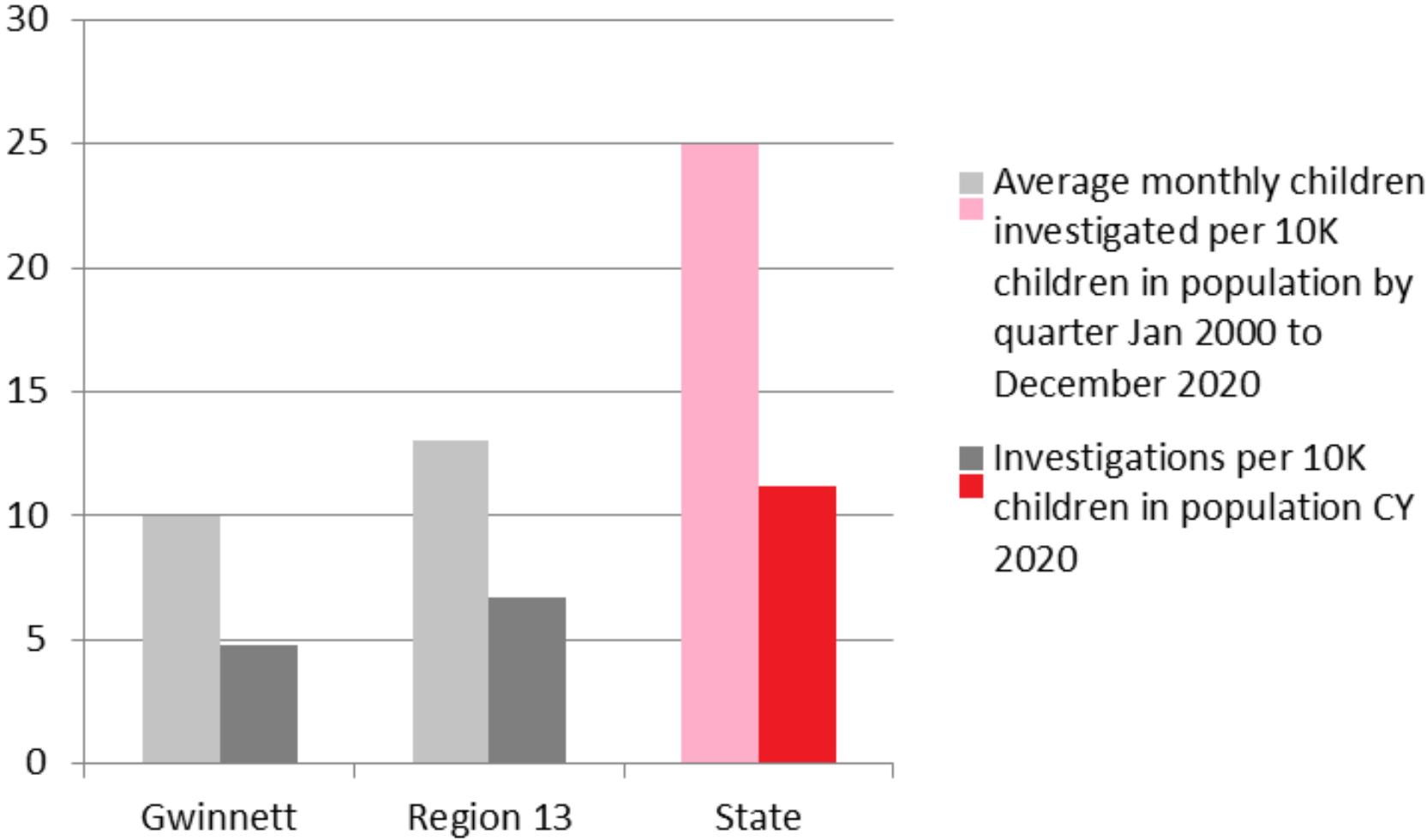
TYPES OF REPORTS PER 10K CHILDREN IN POPULATION CY 2020



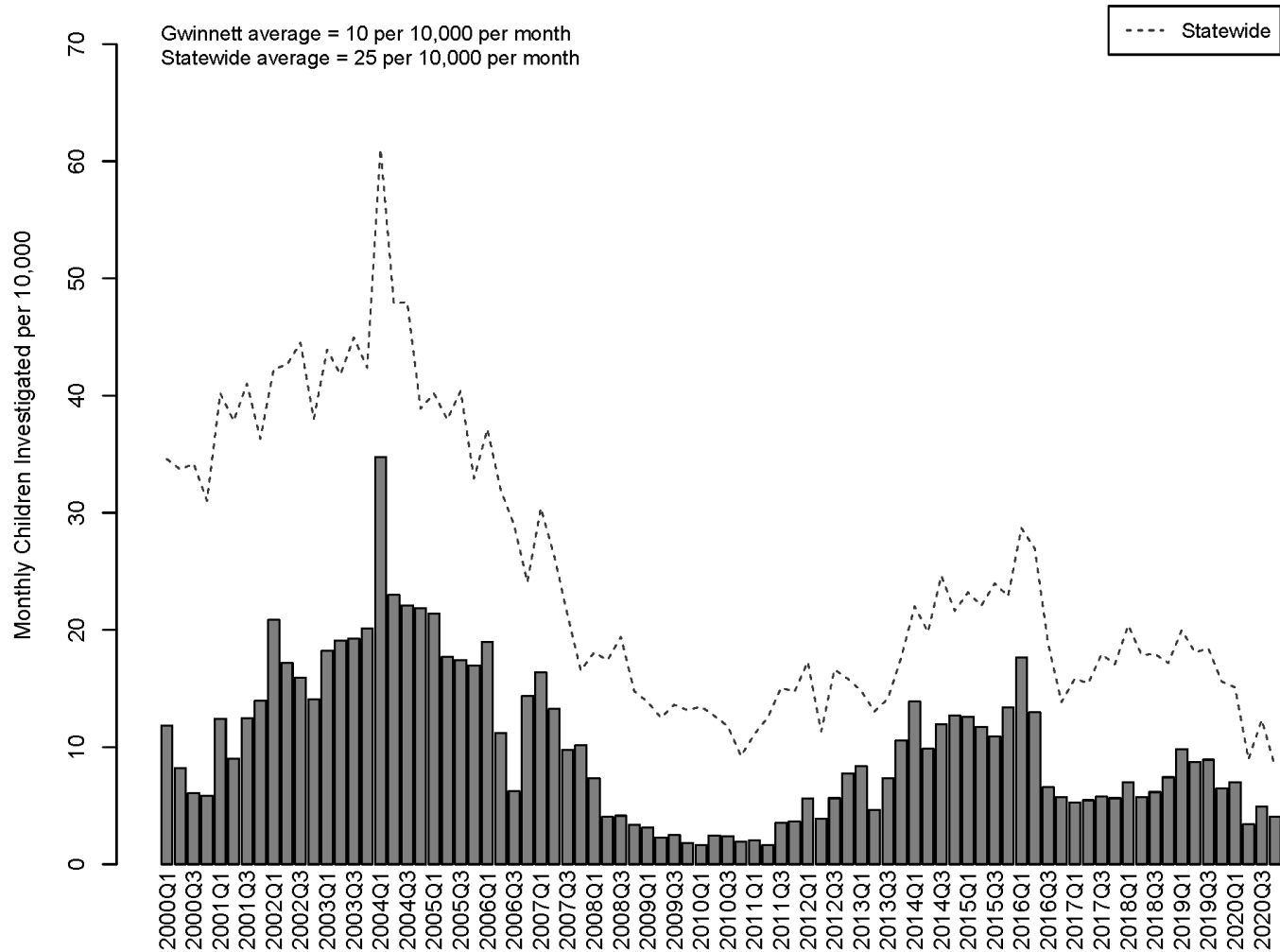
Investigations

CPS

INVESTIGATIONS



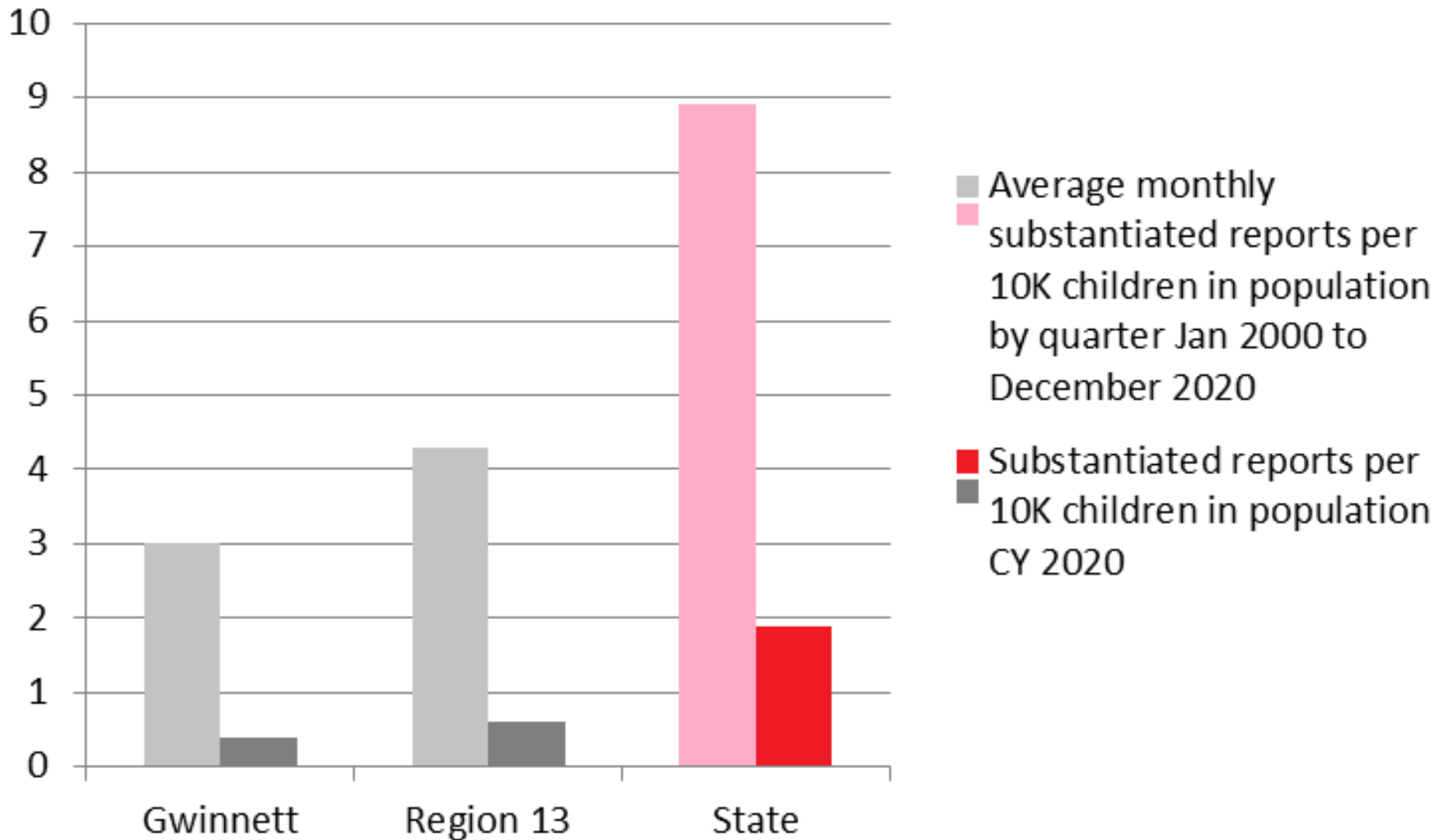
GWINNETT AVERAGE MONTHLY INVESTIGATIONS PER 10K CHILDREN IN POPULATION January 2000 to December 2020



Substantiated Investigations

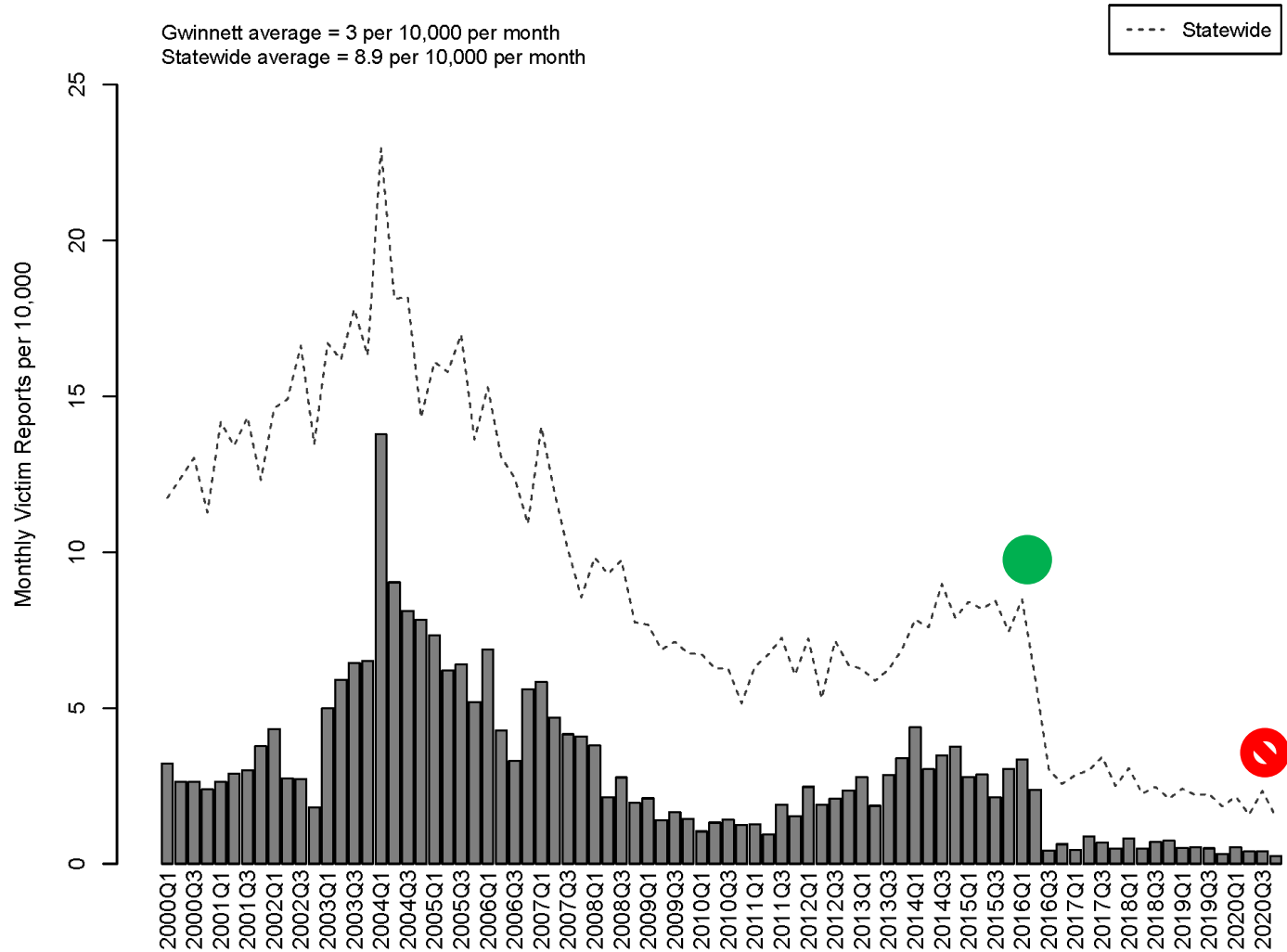
CPS

SUBSTANTIATED INVESTIGATIONS

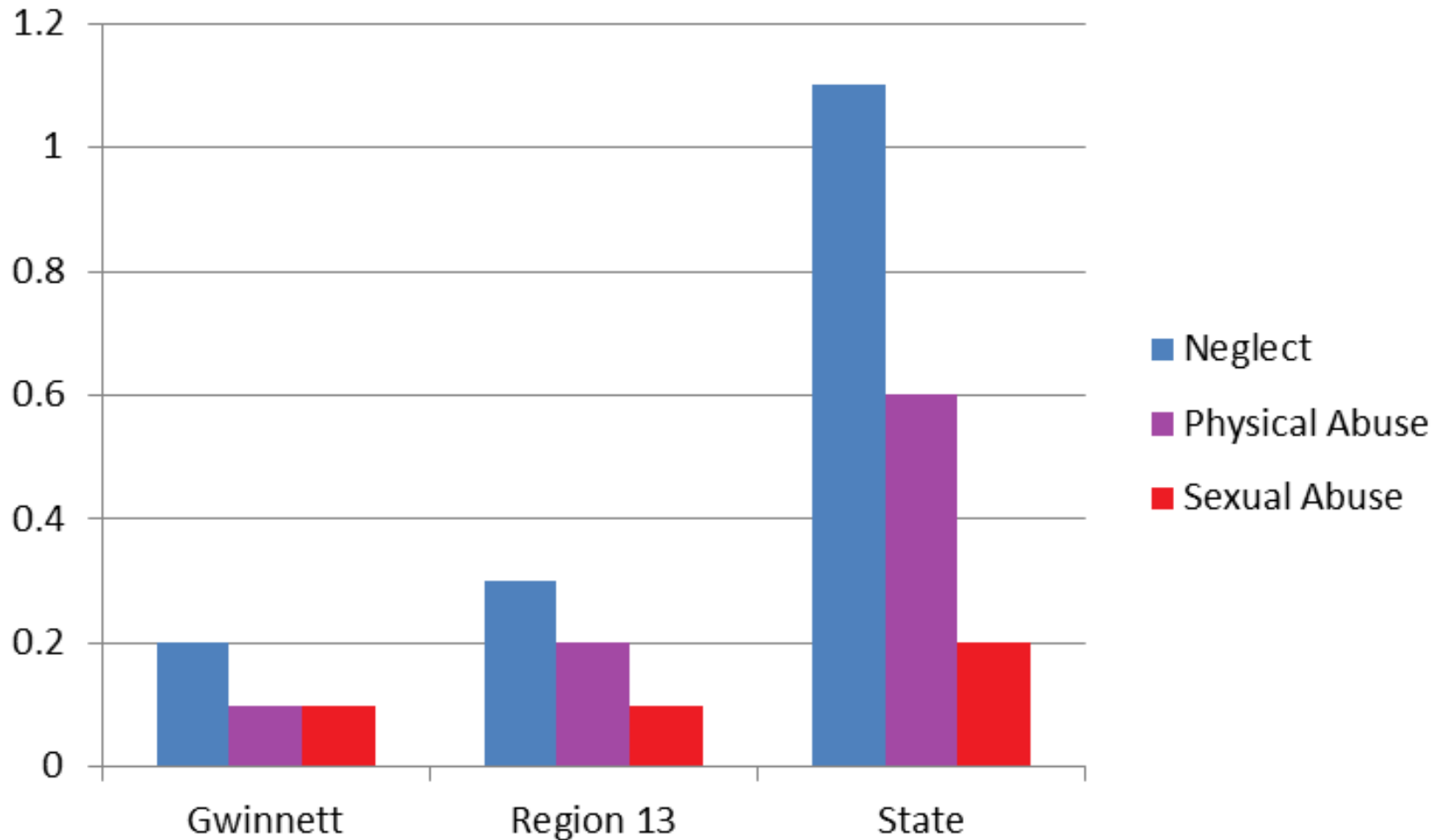


GWINNETT AVERAGE MONTHLY REPORTS SUBSTANTIATED PER 10K CHILDREN IN POPULATION

January 2000 – December 2020



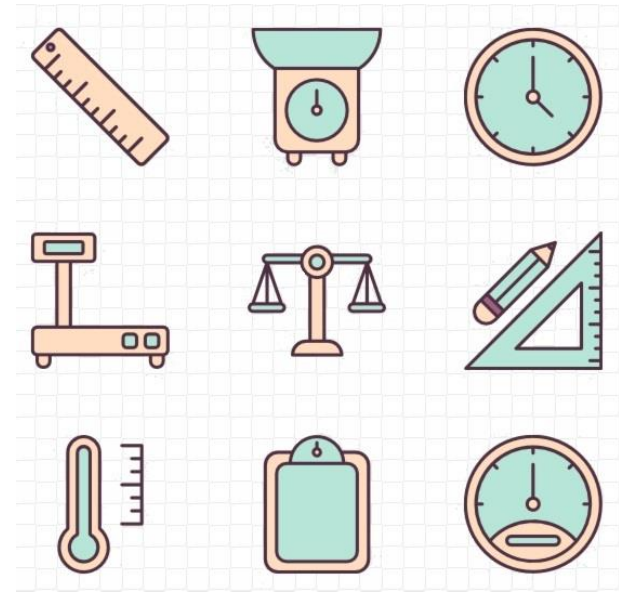
MALTREATMENT TYPES AMONG SUBSTANTIATED CASES CY 2020



Family Regulation

CPS

FAMILY REGULATION

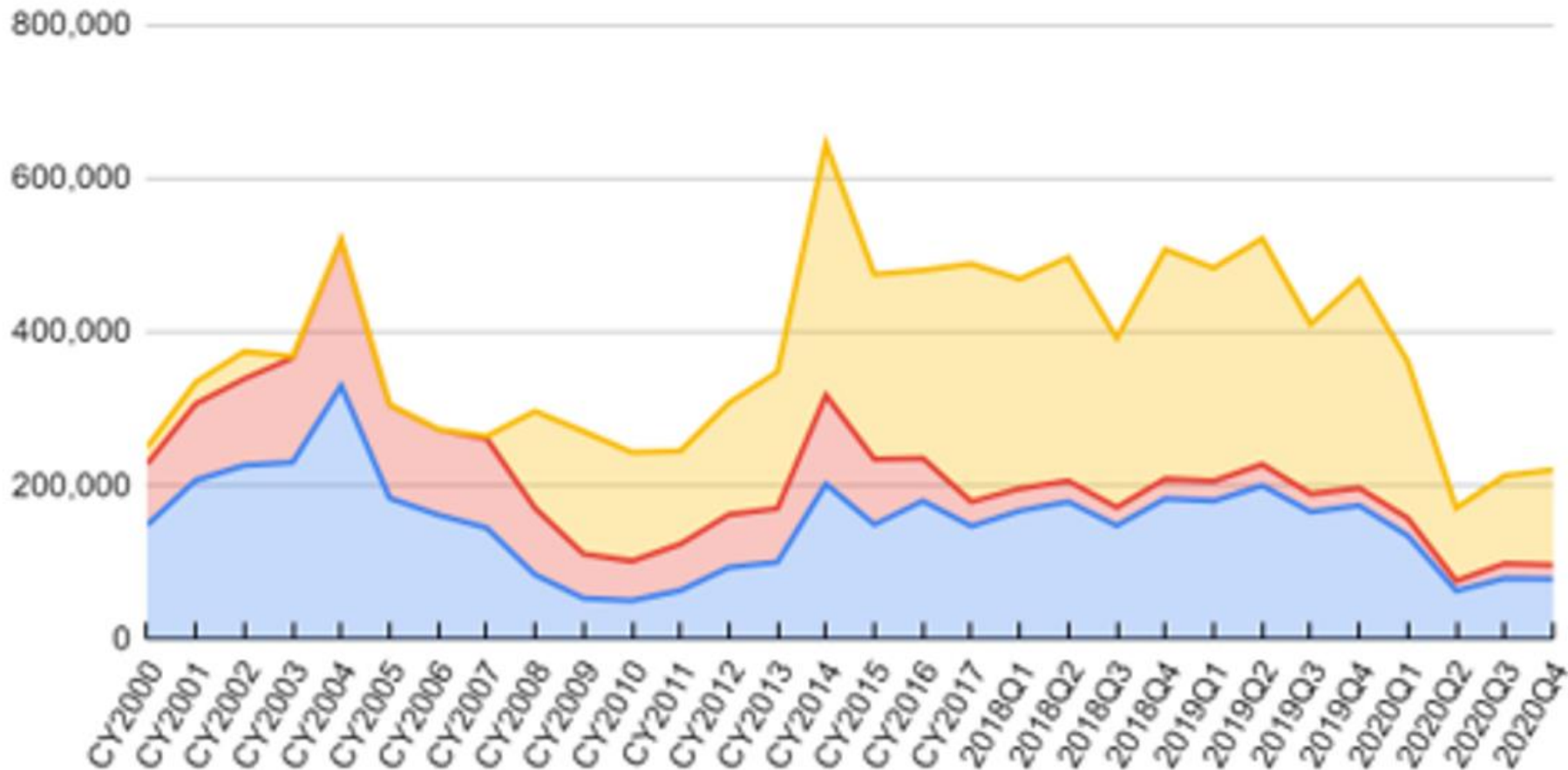


- High-level “person-time” metric
- Count ALL days that ALL children were in open CPS cases
 - Investigation or family support
 - Does NOT include days in family **preservation** cases
- We call it days regulated or FAMILY REGULATION DAYS
- Provides a picture of families and children touched by DFCS

GEORGIA FAMILY REGULATION

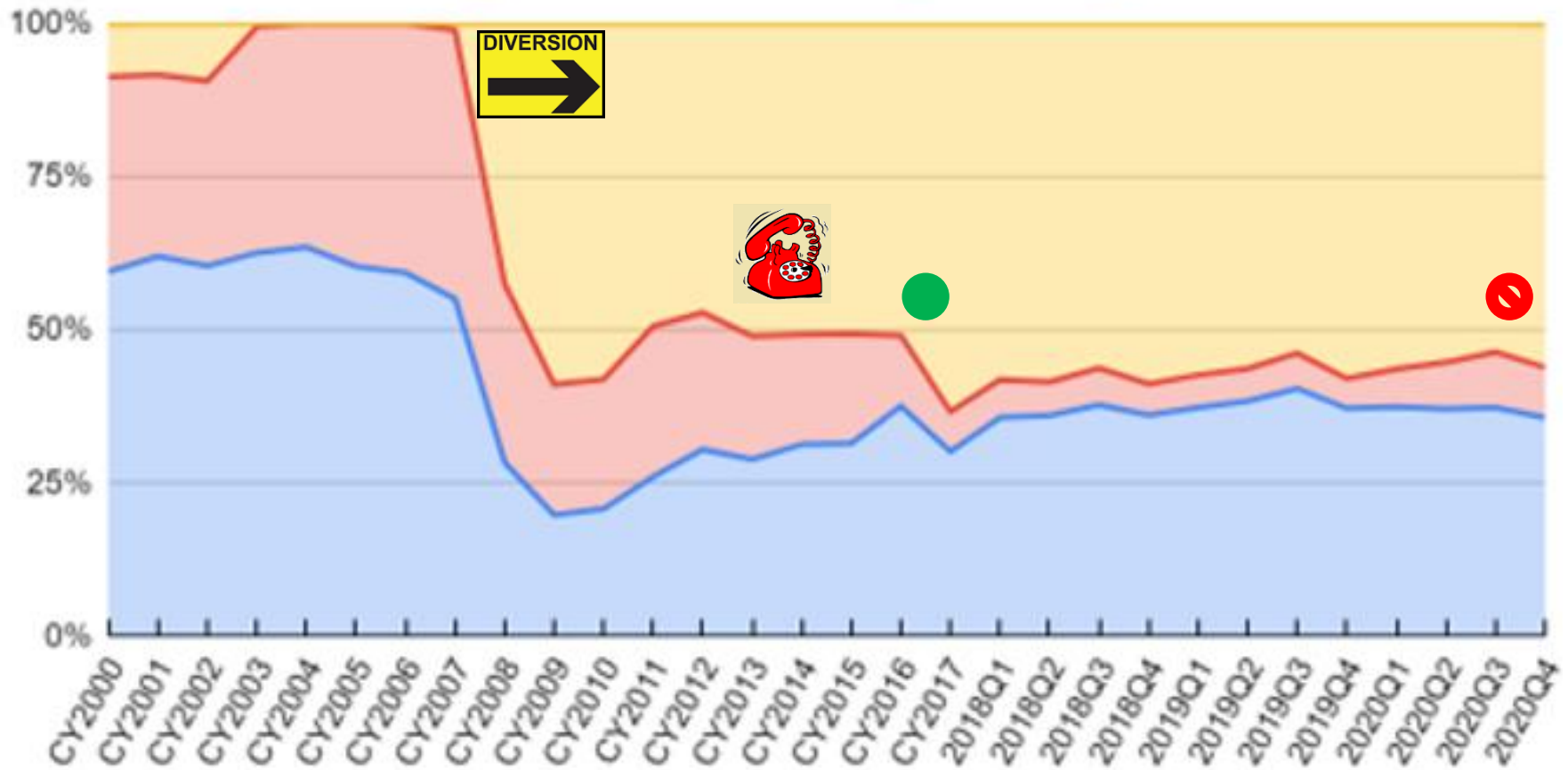
ACTUAL NUMBERS

Other (Family Support) Victims Non-Victims



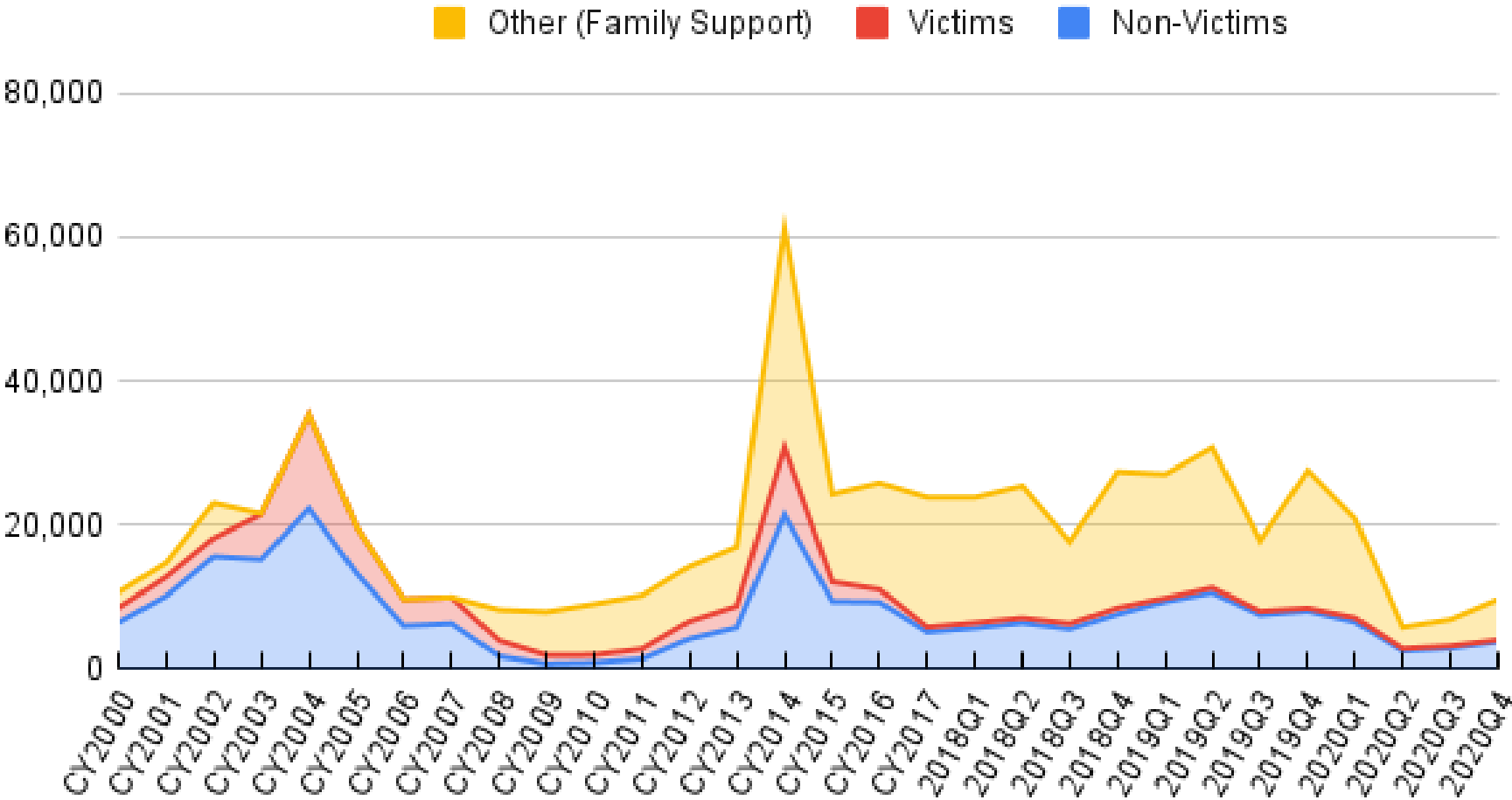
GEORGIA FAMILY REGULATION PROPORTIONAL

Other (Family Support) Victims Non-Victims



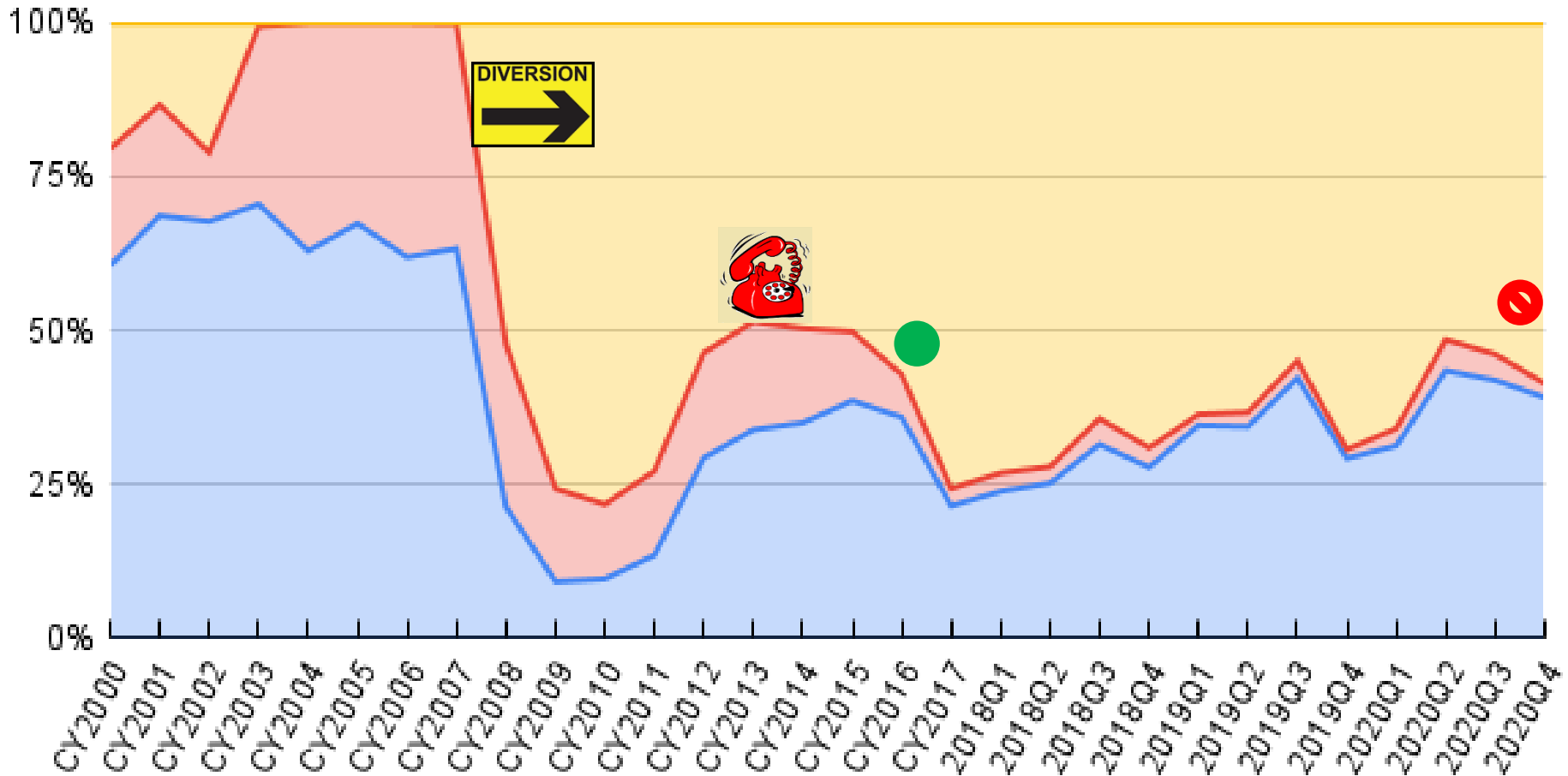
GWINNETT FAMILY REGULATION

ACTUAL NUMBERS



GWINNETT FAMILY REGULATION PROPORTIONAL

■ Other (Family Support)
 ■ Victims
 ■ Non-Victims



RACIAL DISPARITY RATIO

days/year that children of **minority** race spend in family regulation

a =

number of minority race children in the population

days/year that children of **majority** race spend in family regulation

b =

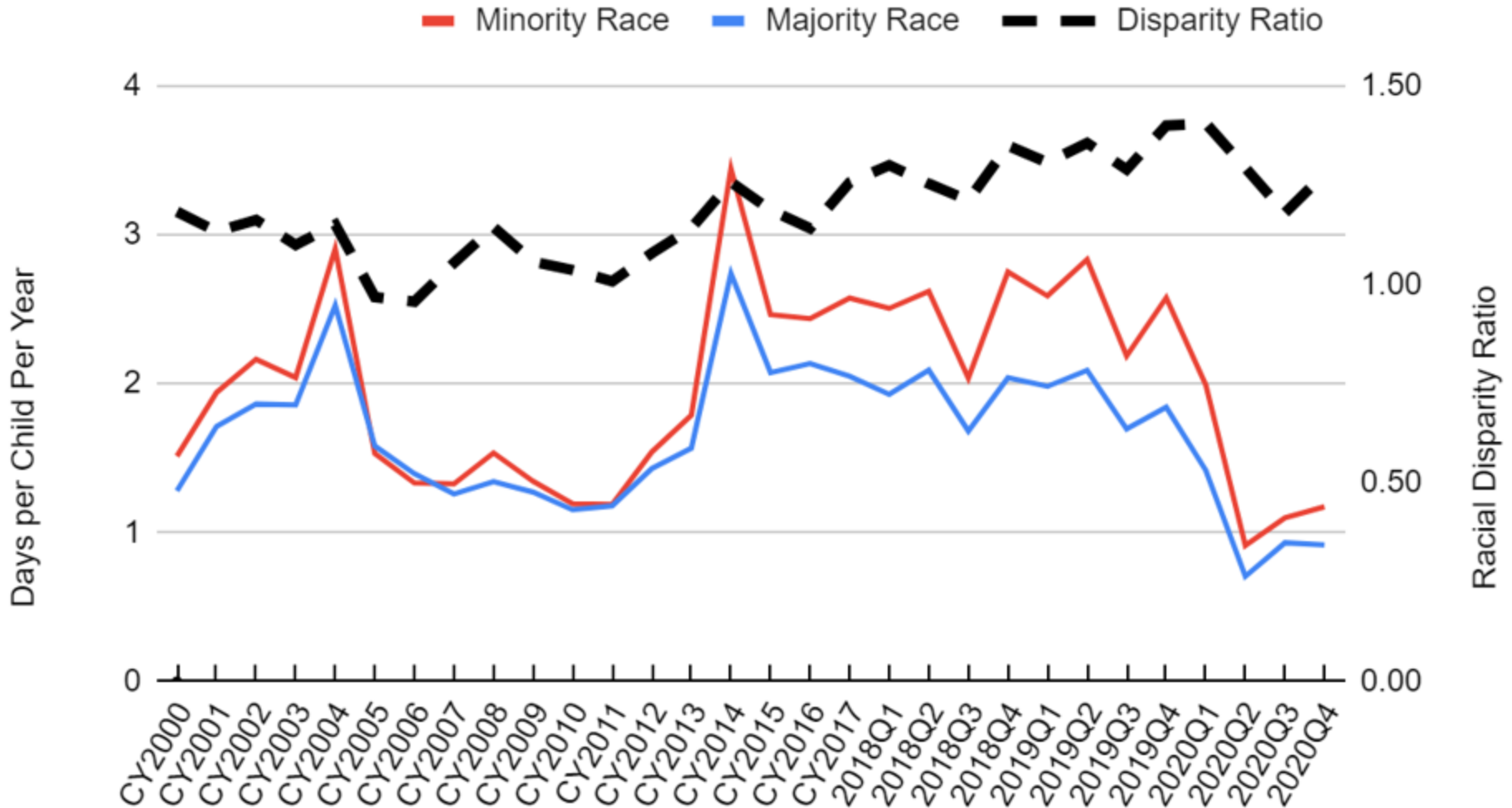
number of majority race children in that population

a

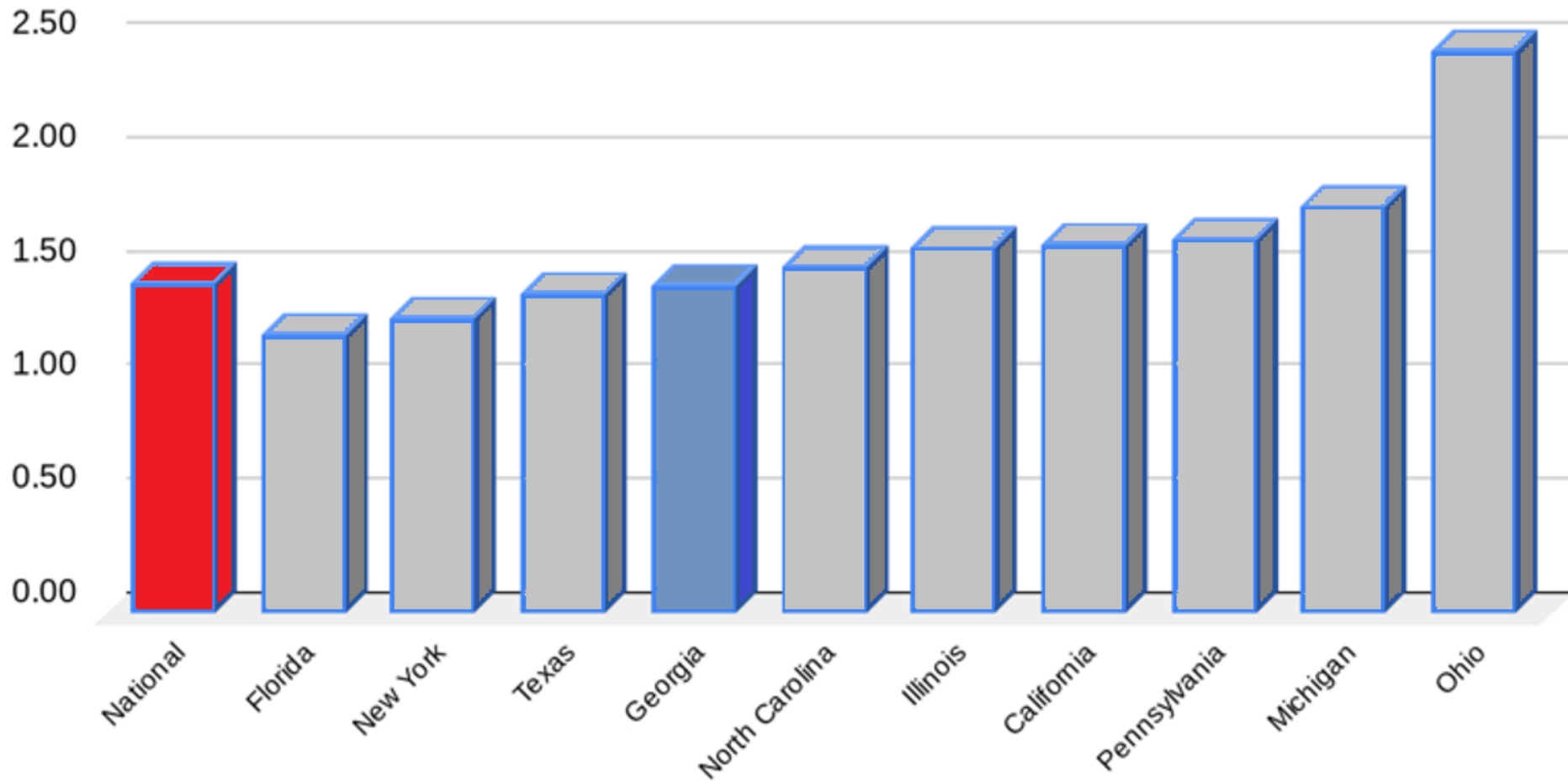
= **racial disparity ratio**

b

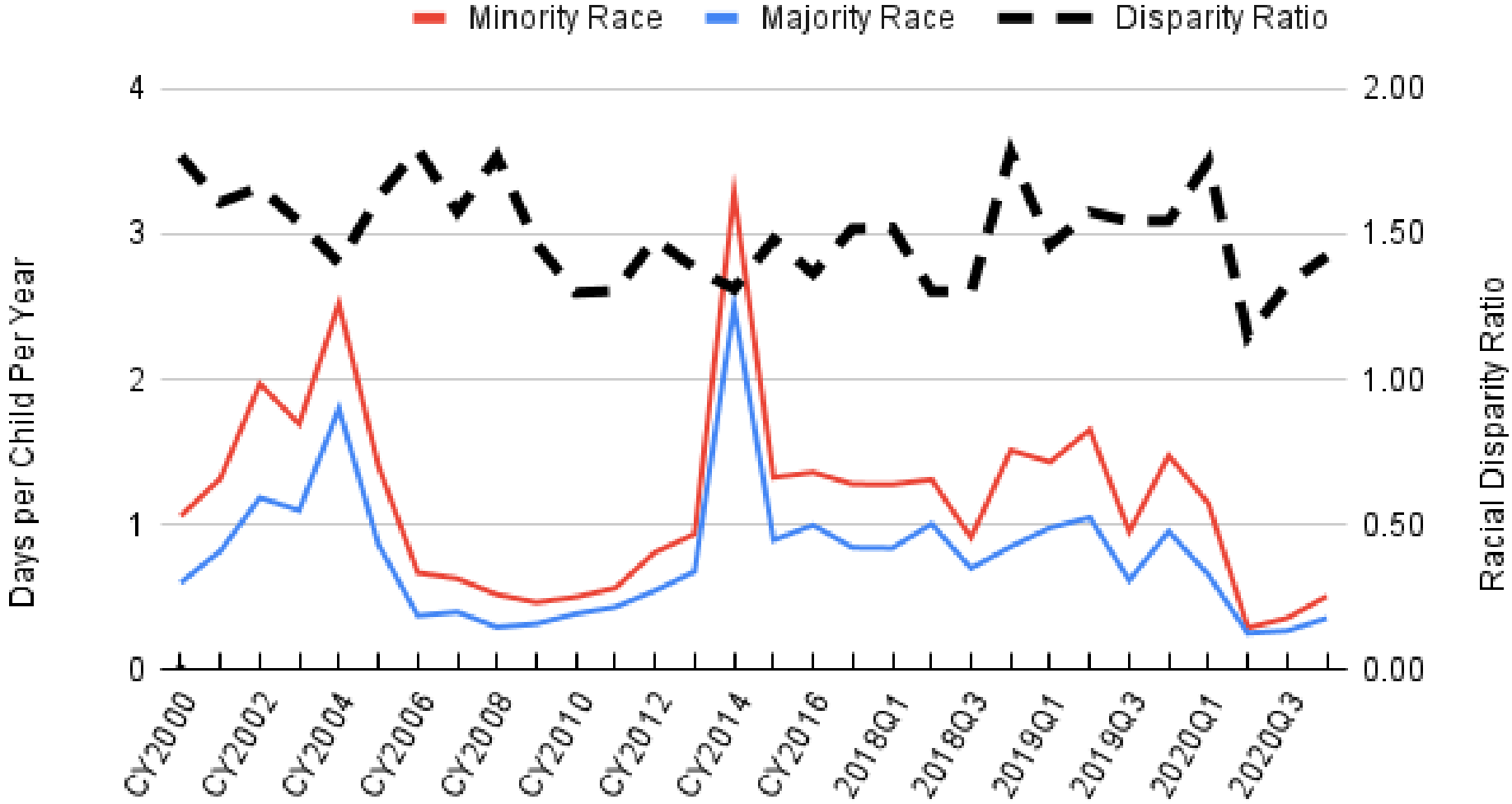
RACIAL DISPARITY IN STATEWIDE FAMILY REGULATION



LARGE STATE RACIAL DISPARITY RATIOS FOR DAYS UNDER FAMILY REGULATION APRIL 2020



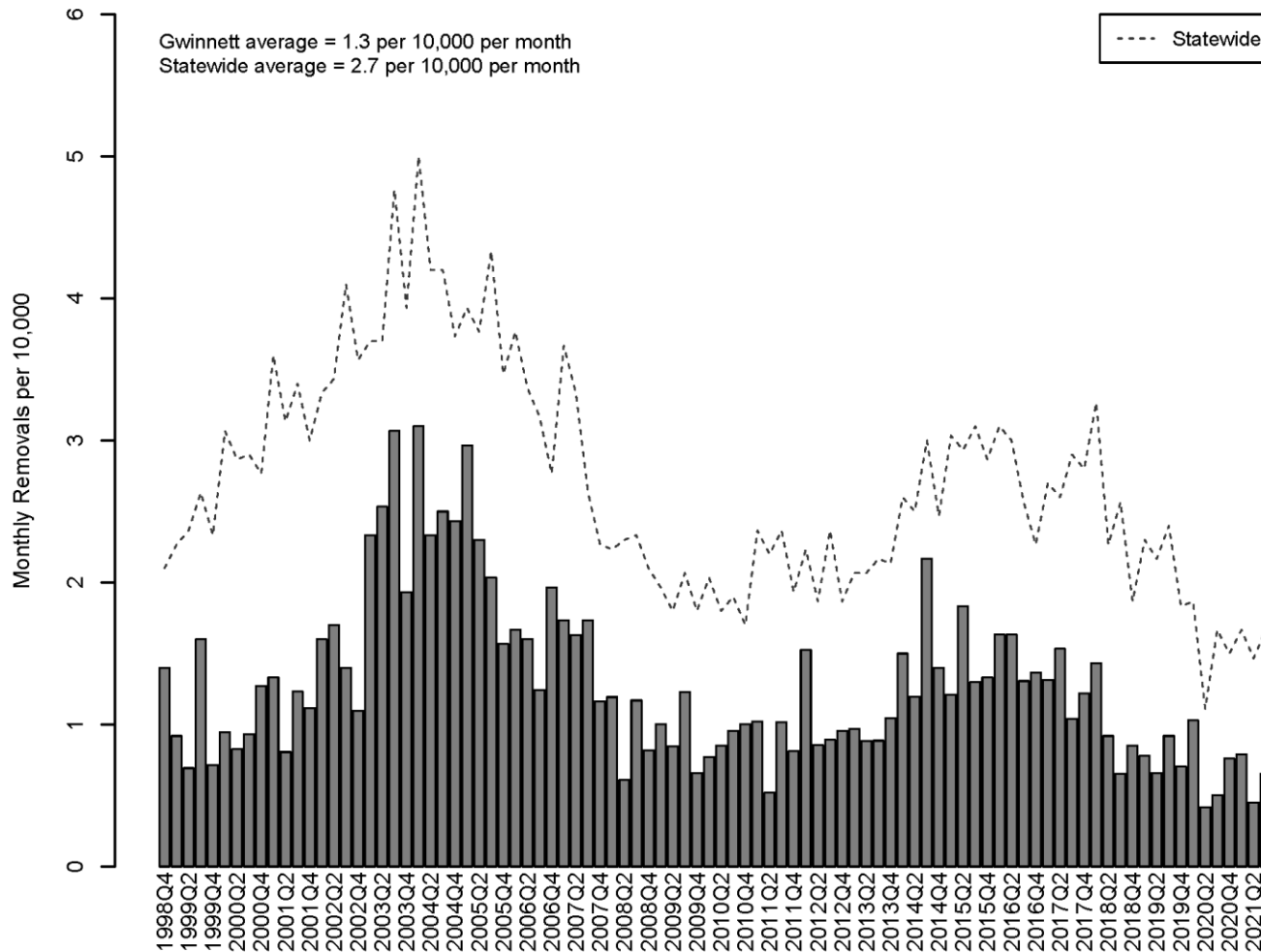
RACIAL DISPARITY IN GWINNETT FAMILY REGULATION



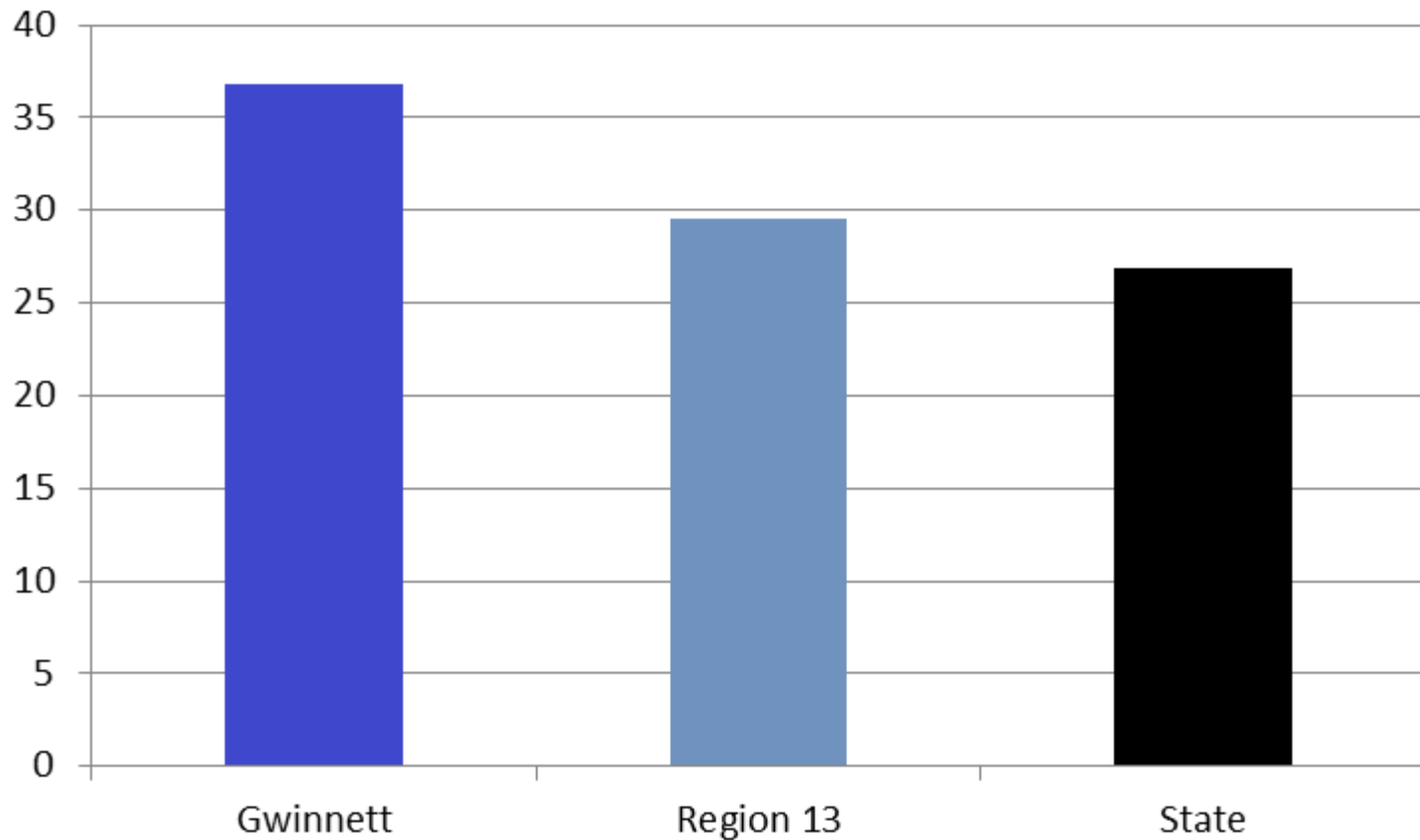
Removal to Foster Care

CPS

AVERAGE MONTHLY REMOVALS PER 10K CHILDREN IN POPULATION OCTOBER 1998 – SEPTEMBER 2021

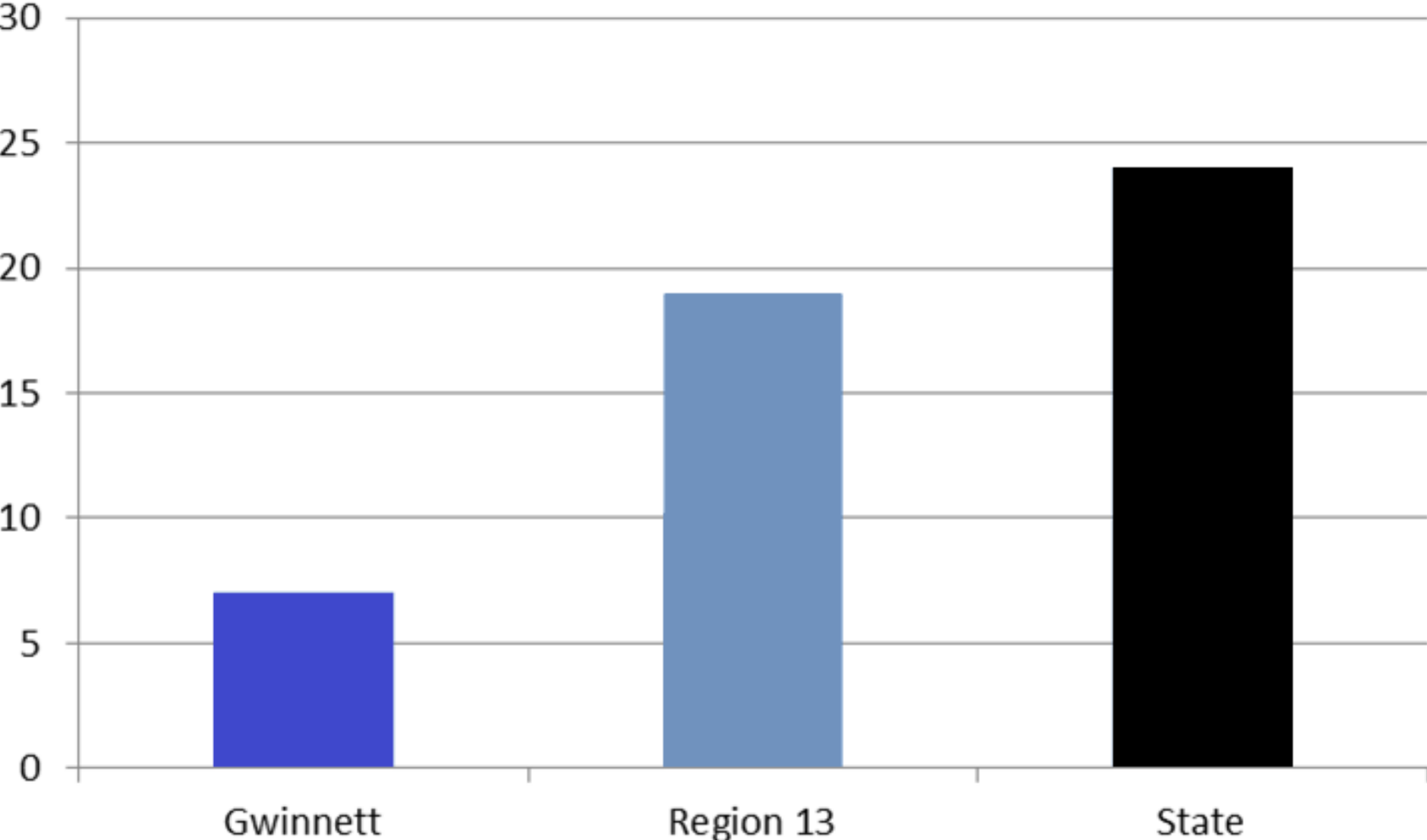


PERCENT OF SUBSTANTIATED VICTIMS REMOVED TO FOSTER CARE CY 2020



MEDIAN DAYS FROM REPORT TO REMOVAL

CY 2020

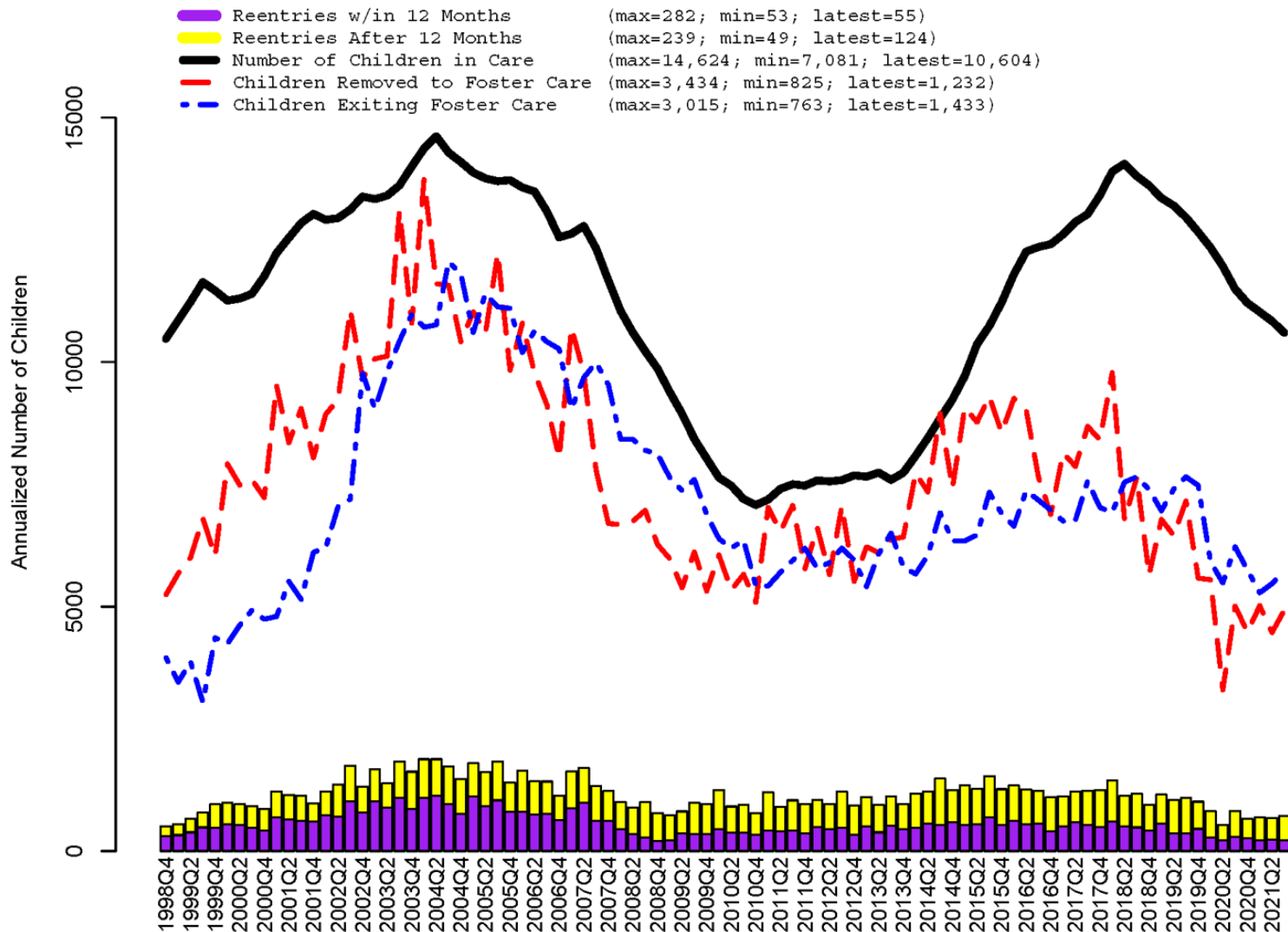


Entries and Exits

FOSTER CARE

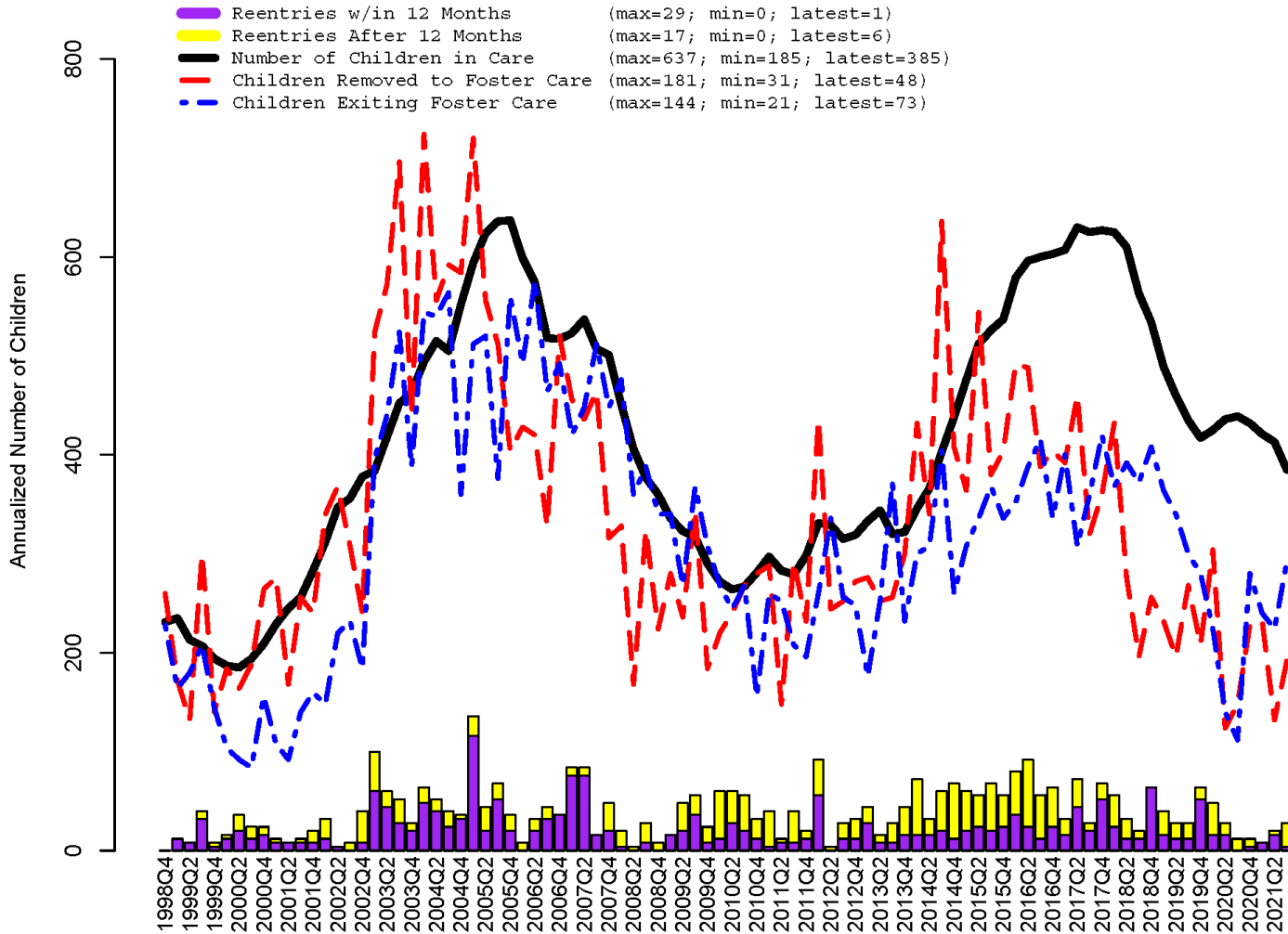
GEORGIA FOSTER CARE DYNAMICS

OCTOBER 1998 – SEPTEMBER 2021



GWINNETT COUNTY FOSTER CARE DYNAMICS

OCTOBER 1998 – SEPTEMBER 2021

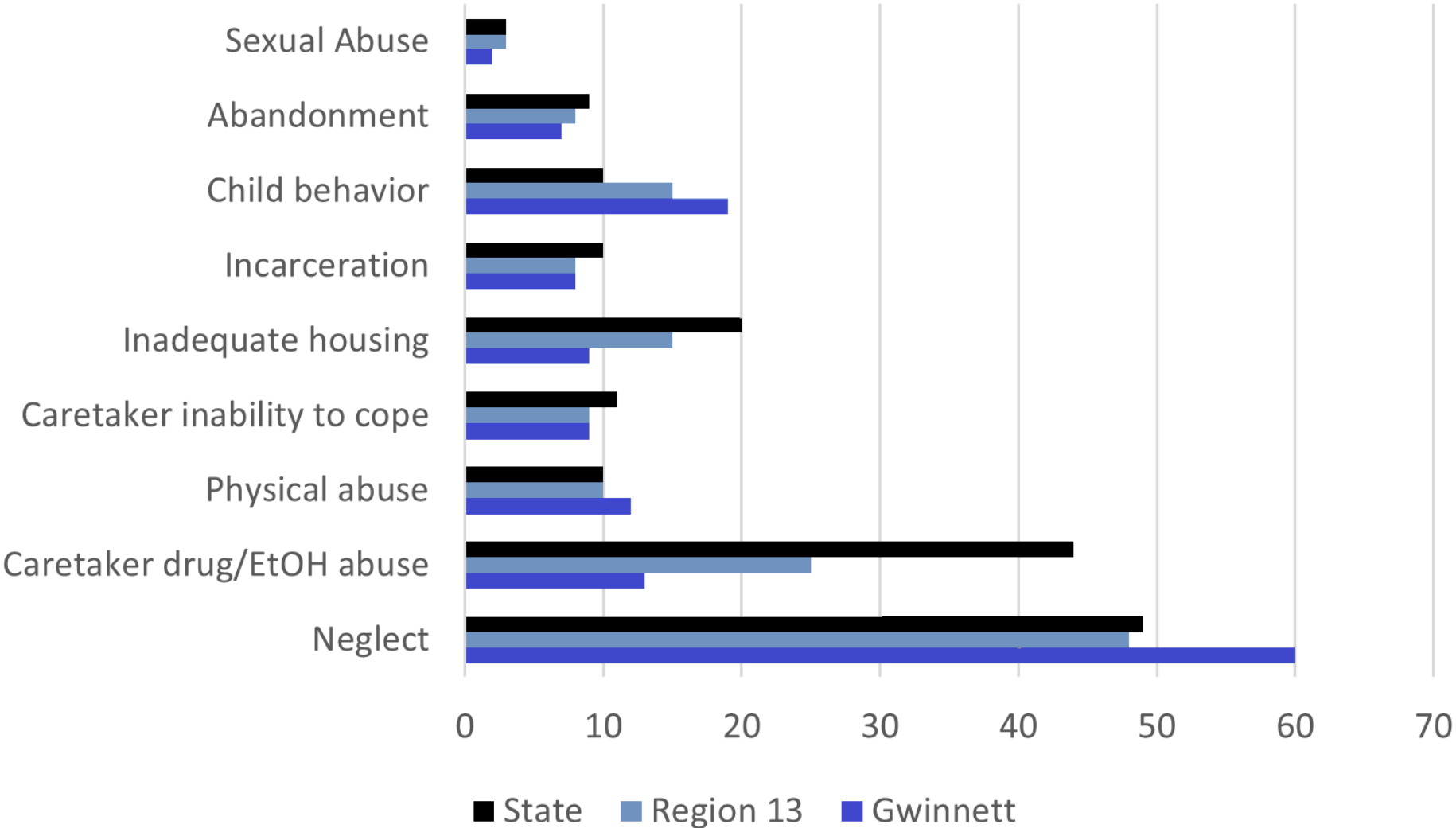


Reasons for Removal

FOSTER CARE

REASONS FOR REMOVAL

OCTOBER 2020 – SEPTEMBER 2021

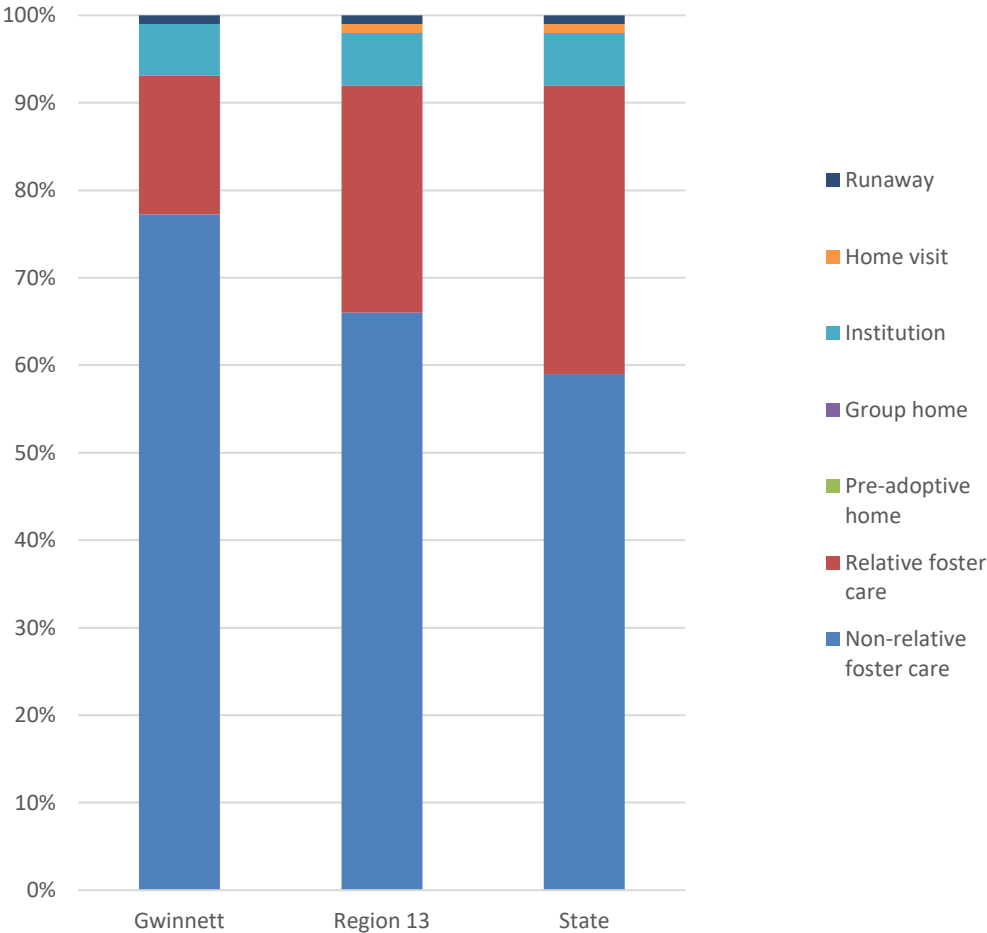


Placement Types

FOSTER CARE

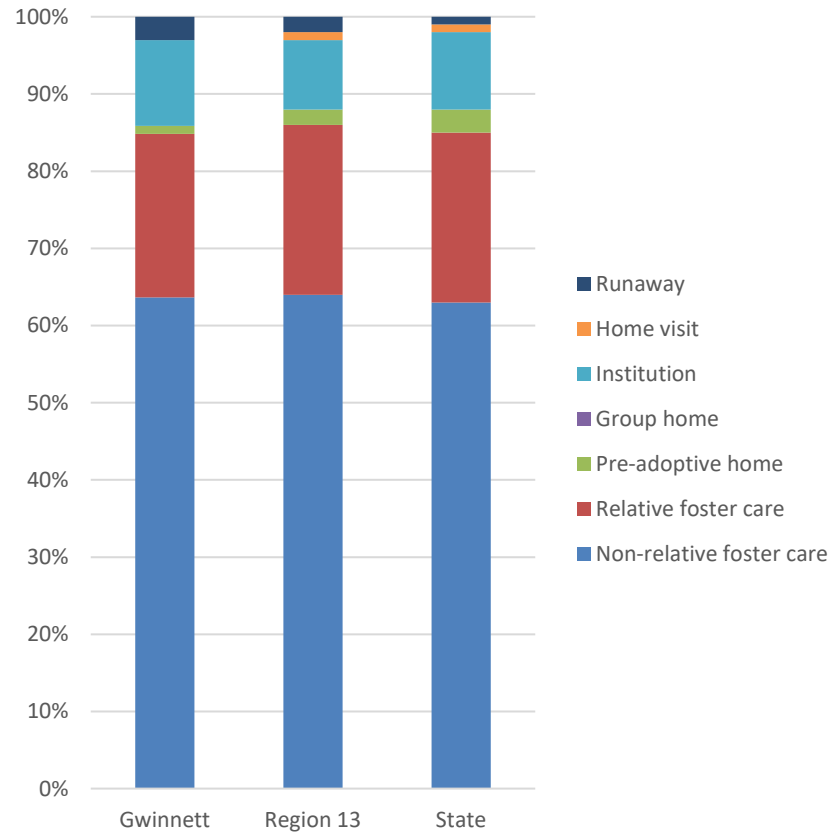
FIRST PLACEMENTS BY TYPE

OCTOBER 2020 – SEPTEMBER 2021



SNAPSHOT OF ALL PLACEMENT TYPES

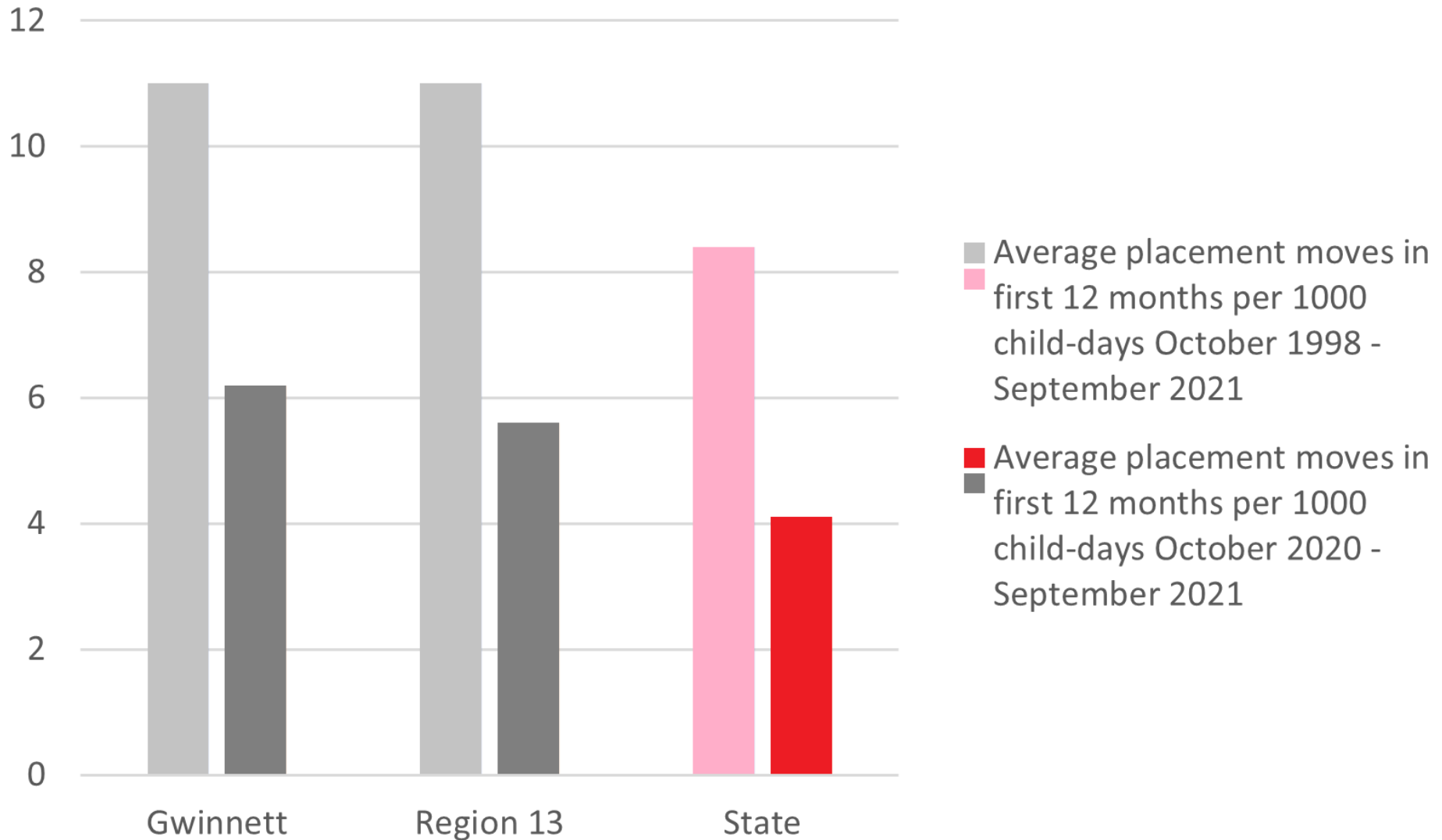
SEPTEMBER 30, 2021



Placement Stability

FOSTER CARE

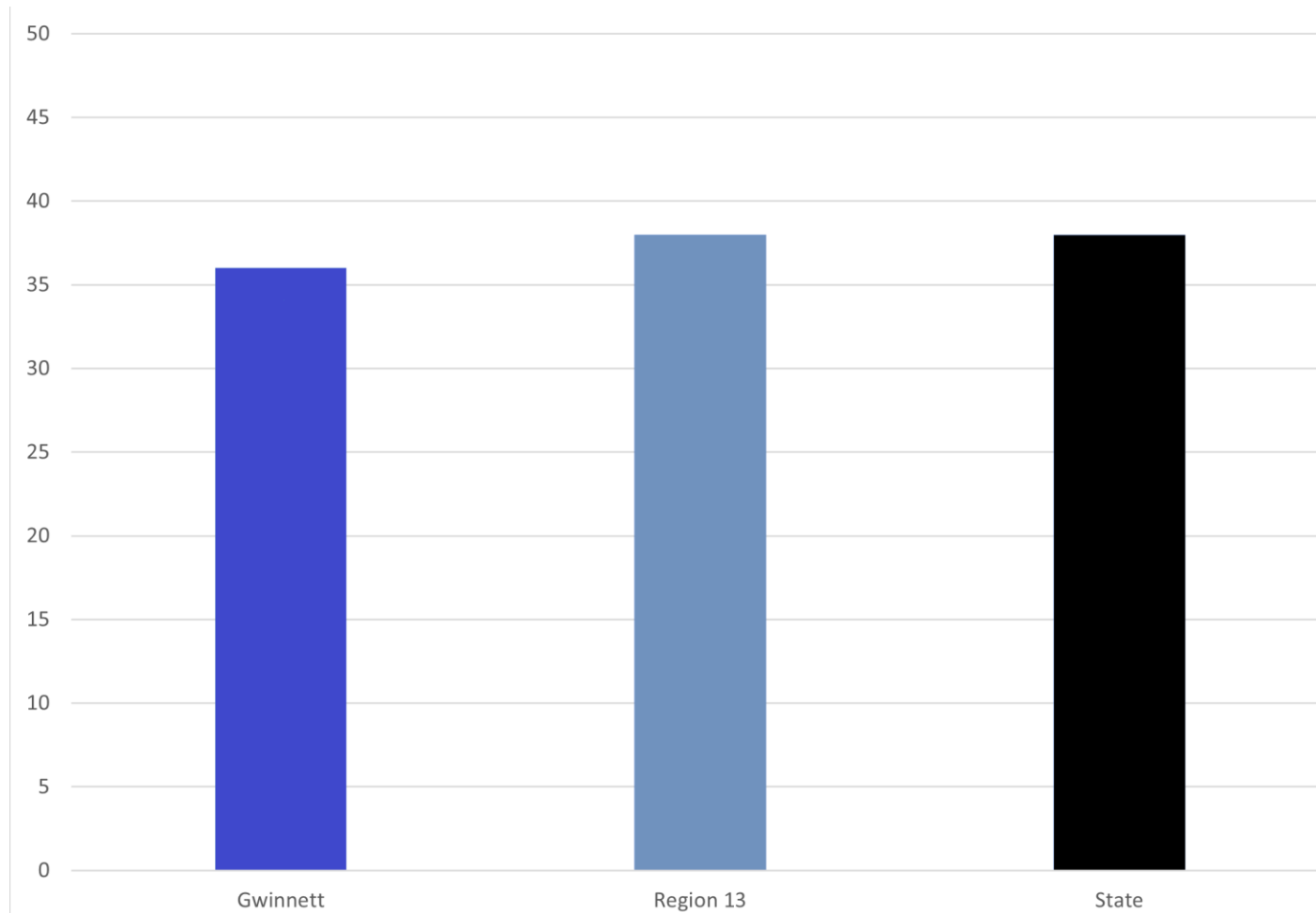
PLACEMENT MOVES



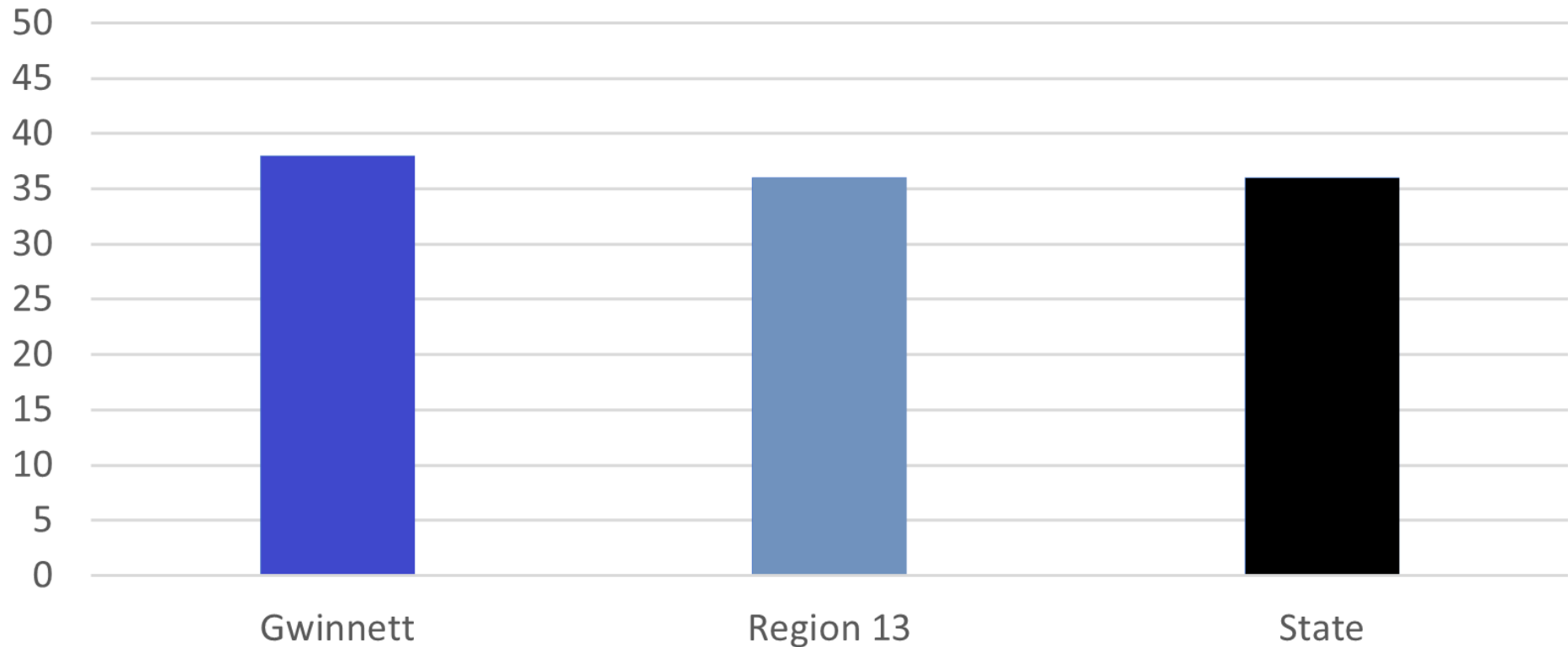
Length of Stay

FOSTER CARE

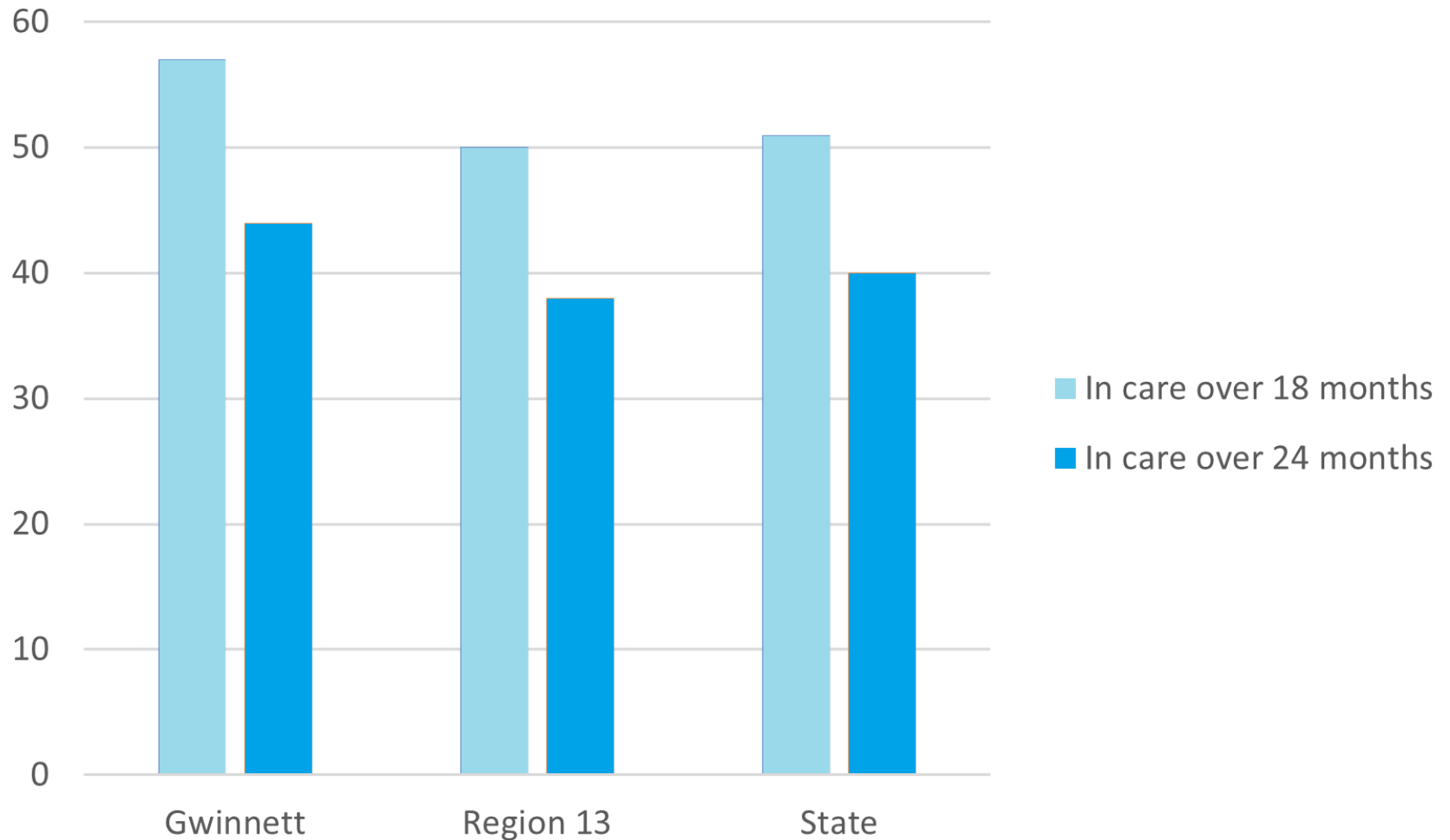
PERCENTAGE OF CHILDREN IN FOSTER CARE ACHIEVING PERMANENCE WITHING 12 MONTHS OCTOBER 1998 – SEPTEMBER 2021



PERCENTAGE OF CHILDREN IN FOSTER CARE ON SEPTEMBER 30, 2020 WHO ACHIEVED PERMANENCE WITHIN 12 MONTHS



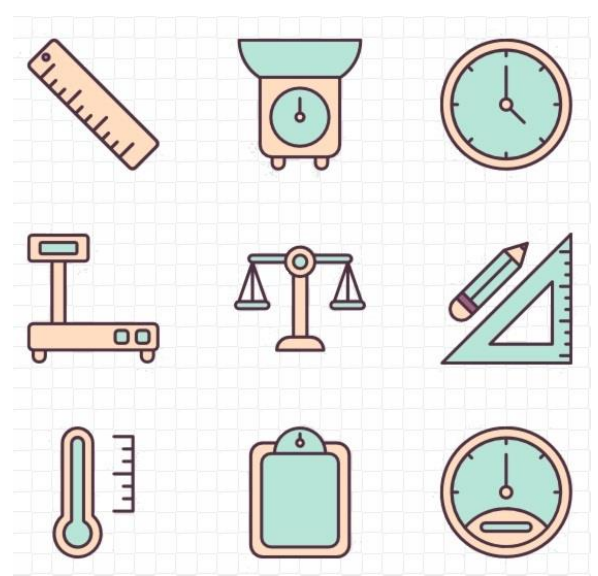
PERCENTAGE OF CHILDREN IN LONG STAY FOSTER CARE SEPTEMBER 30, 2021



Family Separation Days

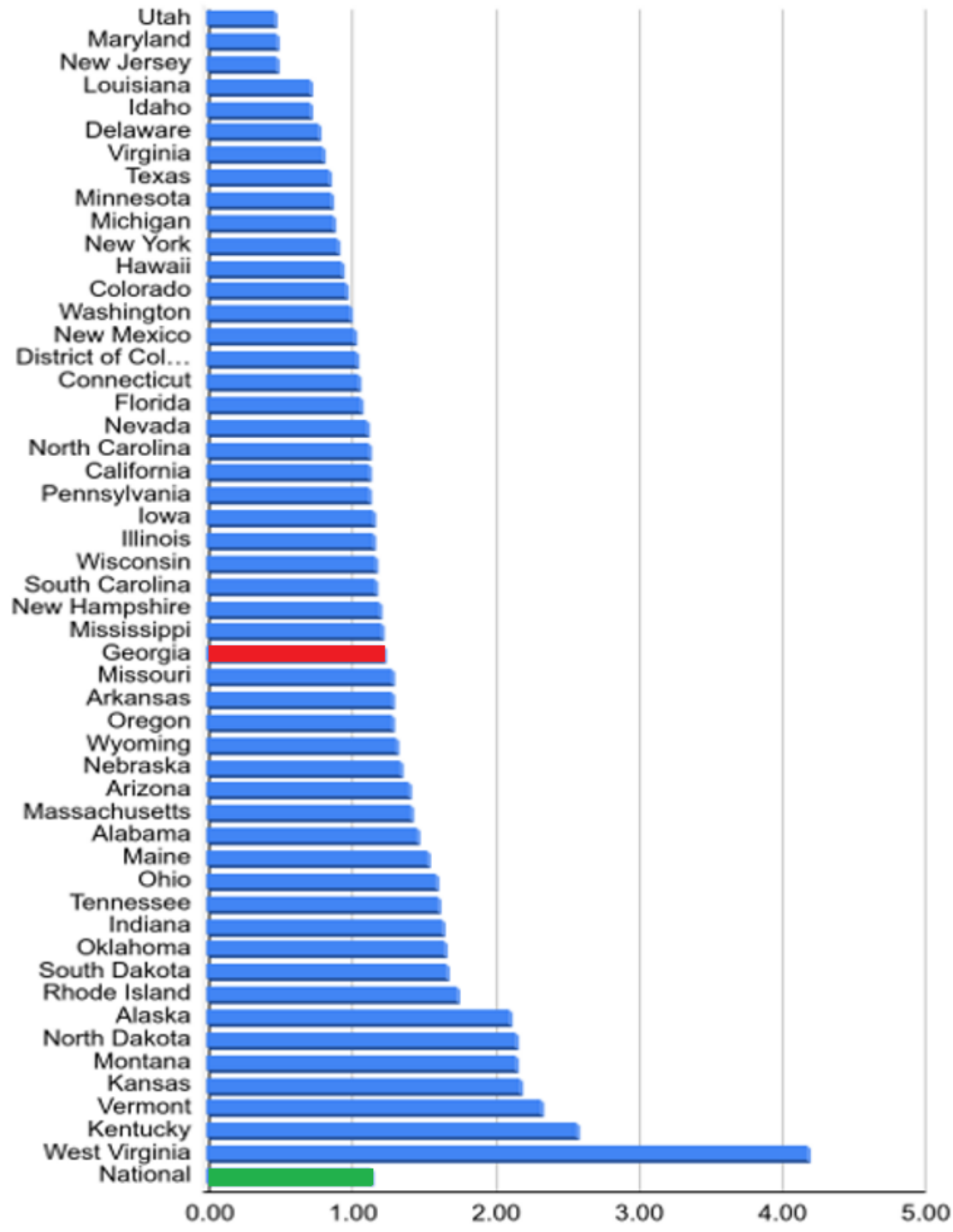
FOSTER CARE

FAMILY SEPARATION

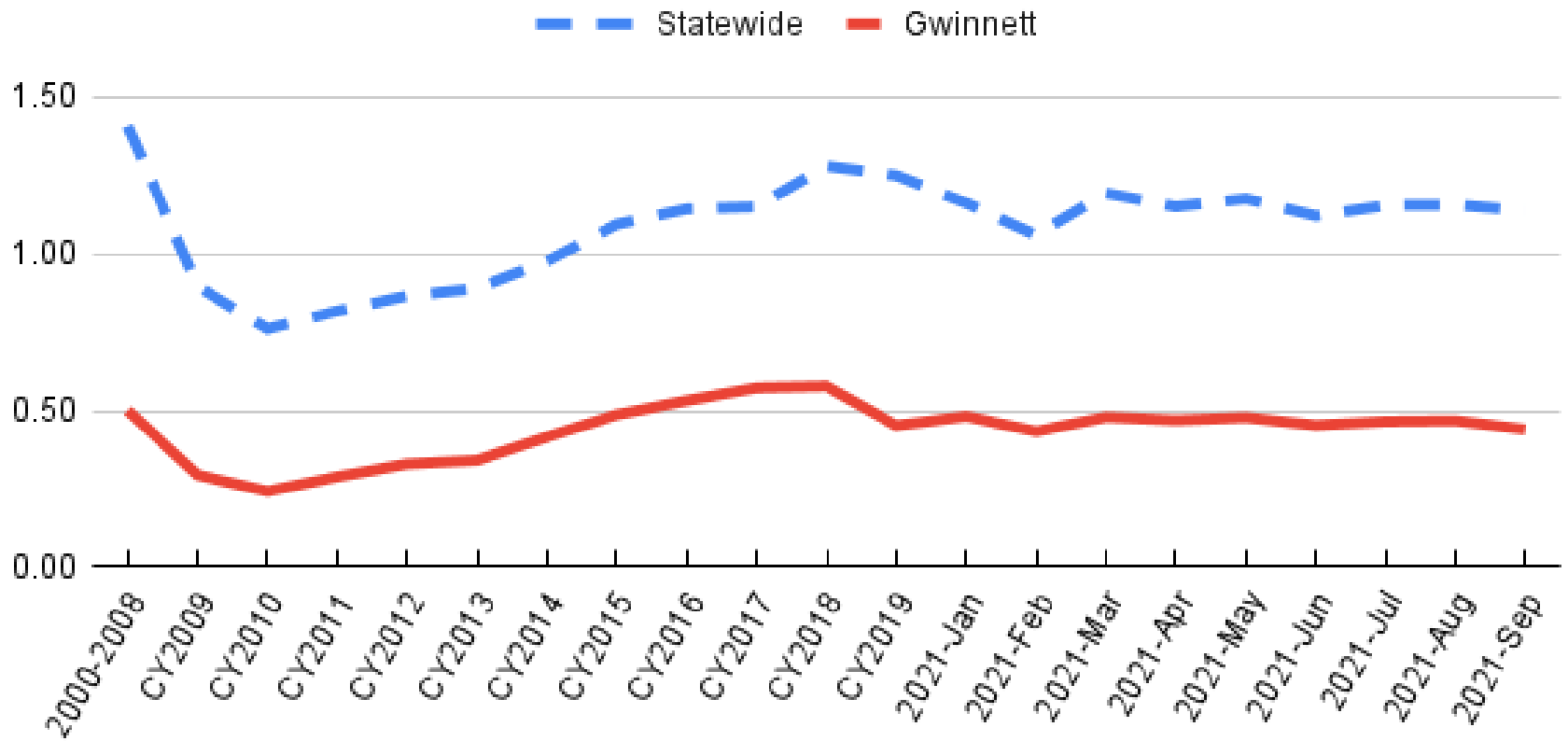


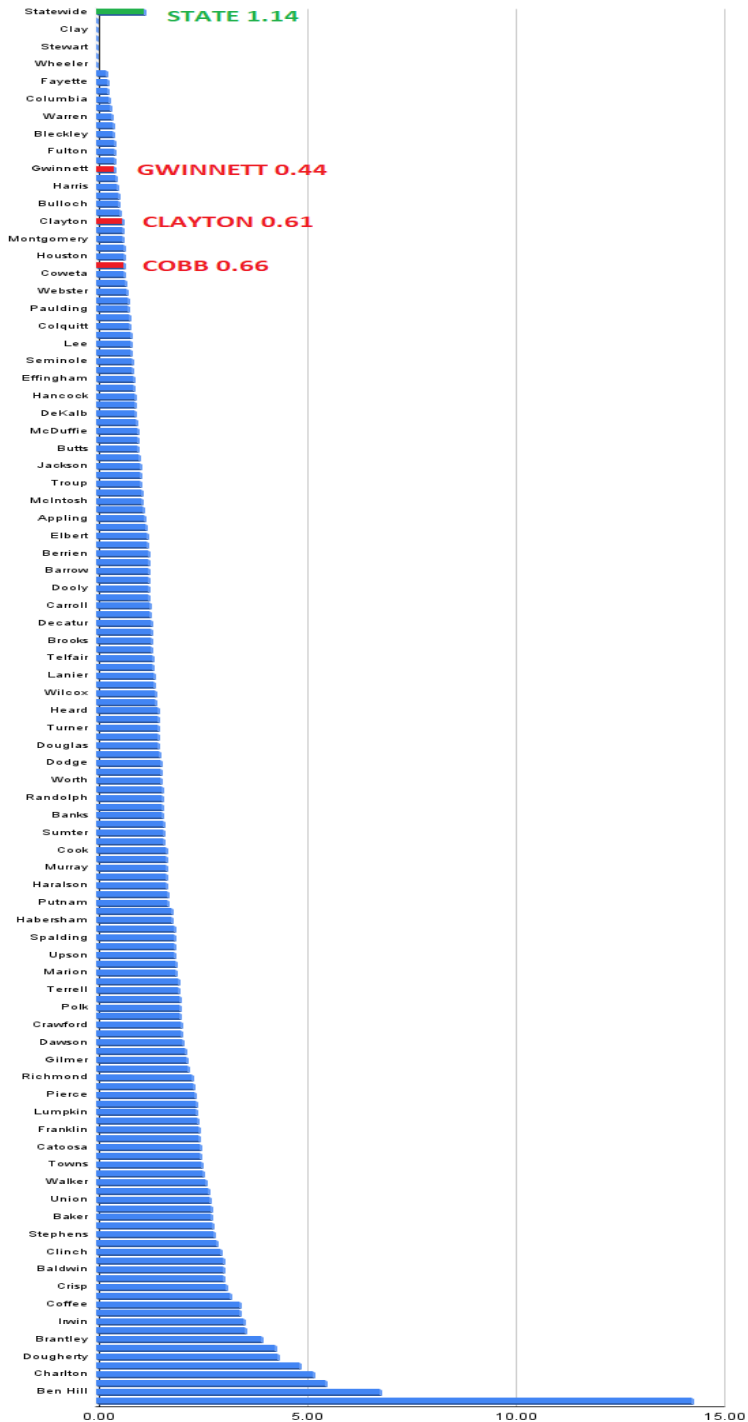
- Another “person-time” metric
- Count ALL days that ALL children in foster care were in non-family placements
 - Non-relative foster care, congregate care, runaway, or ILP placement
- We call it days separated from family or FAMILY SEPARATION DAYS

NATIONAL
COMPARISON
OF AVERAGE
DAYS SEPARATED
FROM FAMILY
PER CHILD IN
REGION
FY 2020



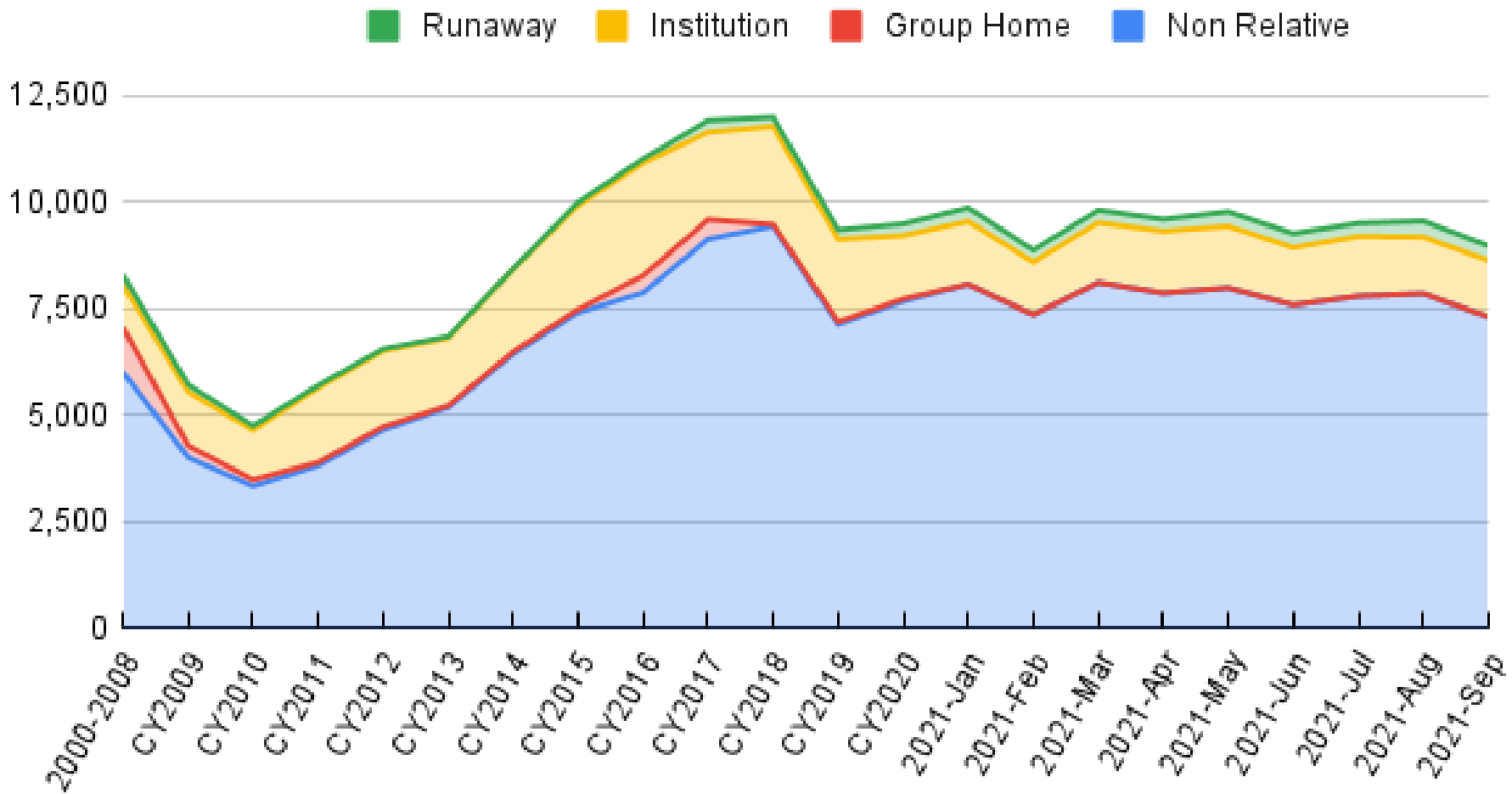
AVERAGE DAYS SEPARATED FROM FAMILY PER CHILD IN REGION



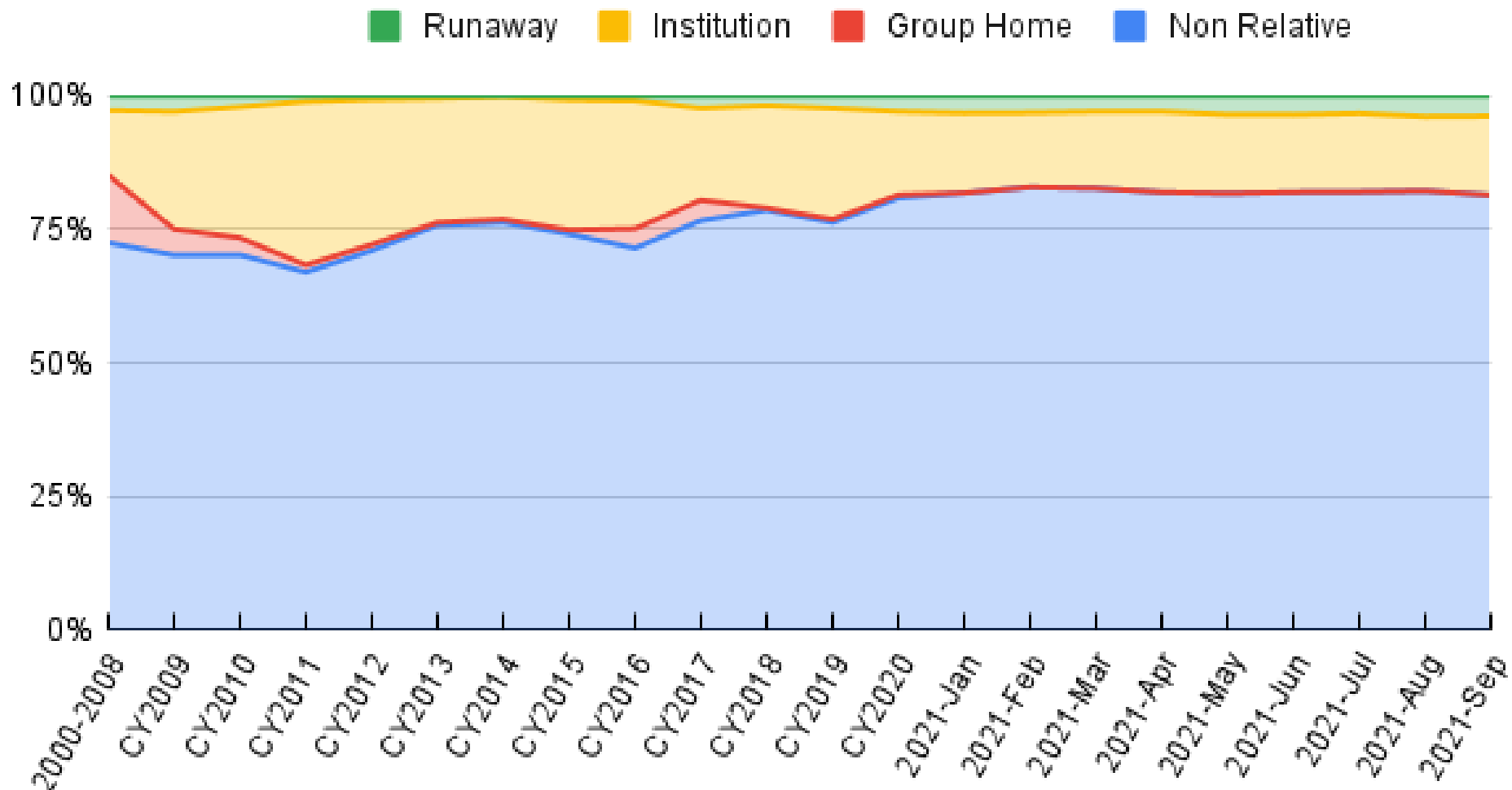


**AVERAGE DAYS
SEPARATED
FROM FAMILY
PER CHILD IN
REGION BY
COUNTY
SEPTEMBER 2021**

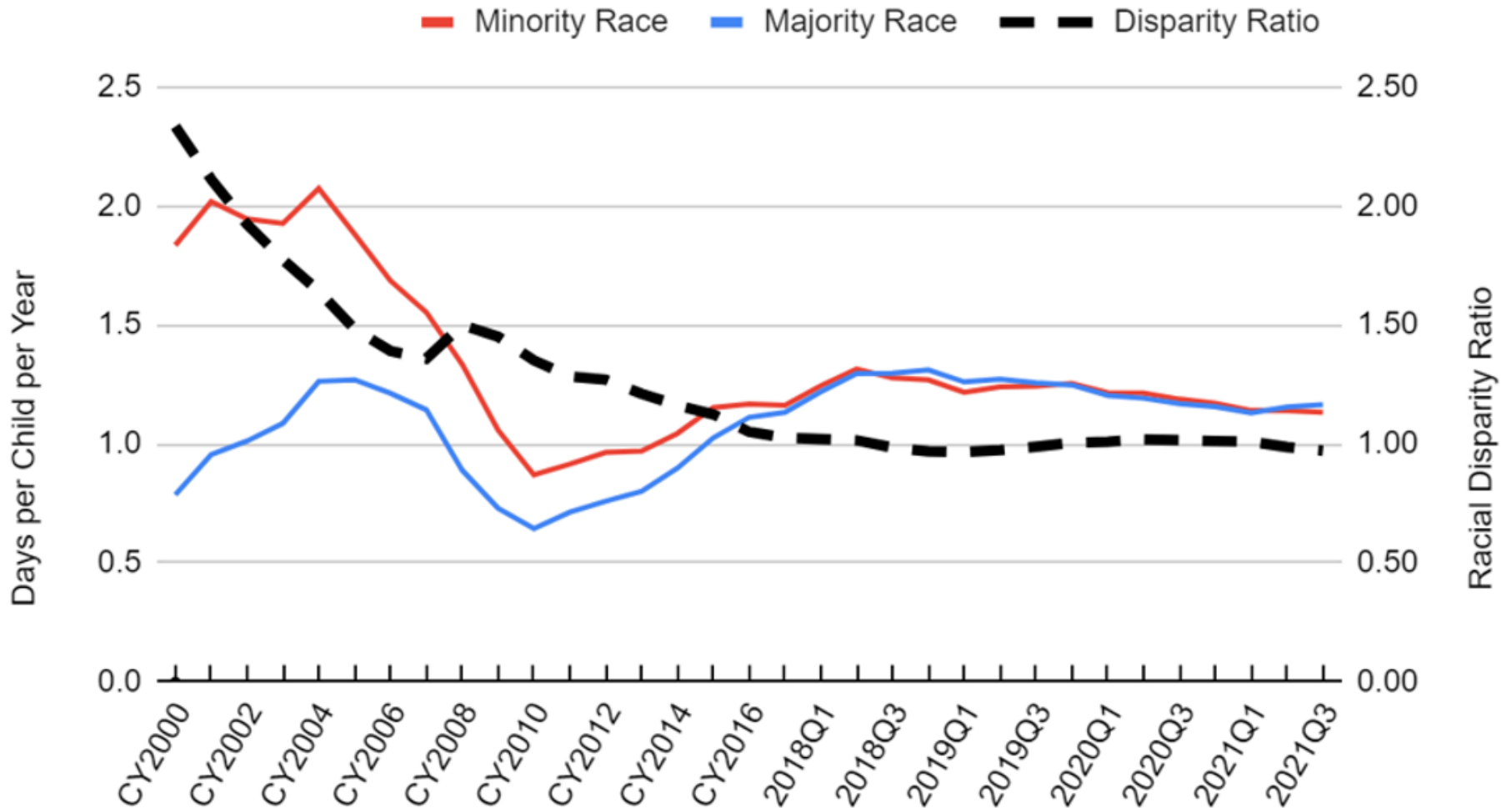
GWINNETT FAMILY SEPARATION PLACEMENT TYPES



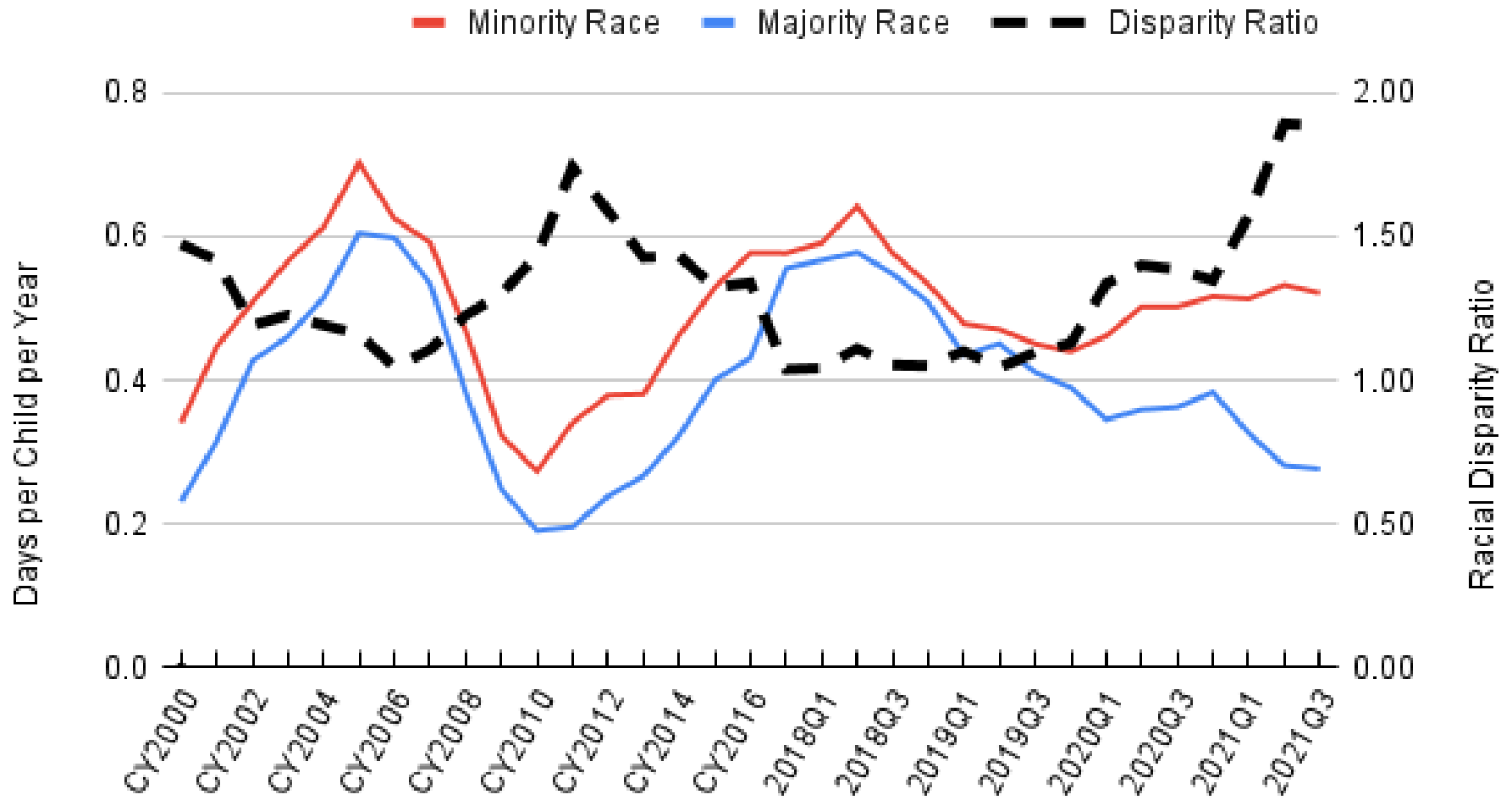
GWINNETT FAMILY SEPARATION PLACEMENT TYPES

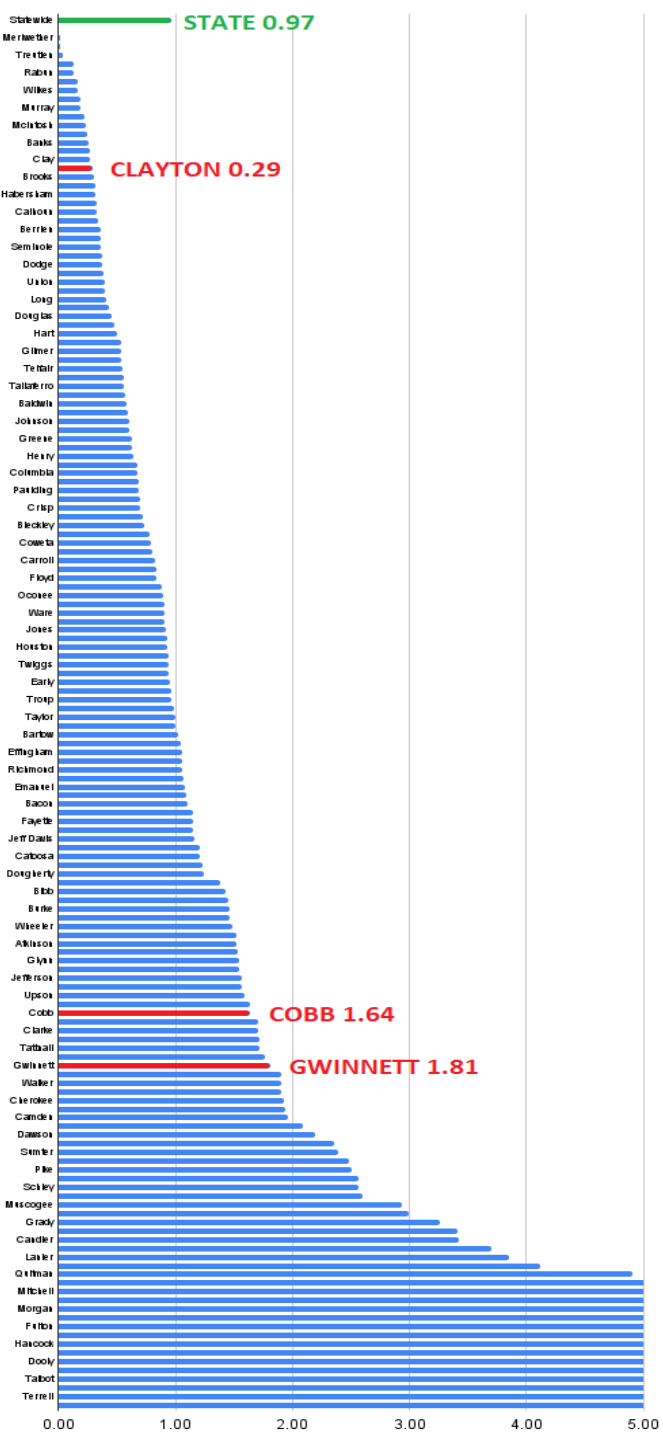


GEORGIA MONTHLY FAMILY SEPARATION DAYS PER CHILD PER YEAR



GWINNETT MONTHLY FAMILY SEPARATION DAYS PER CHILD PER YEAR





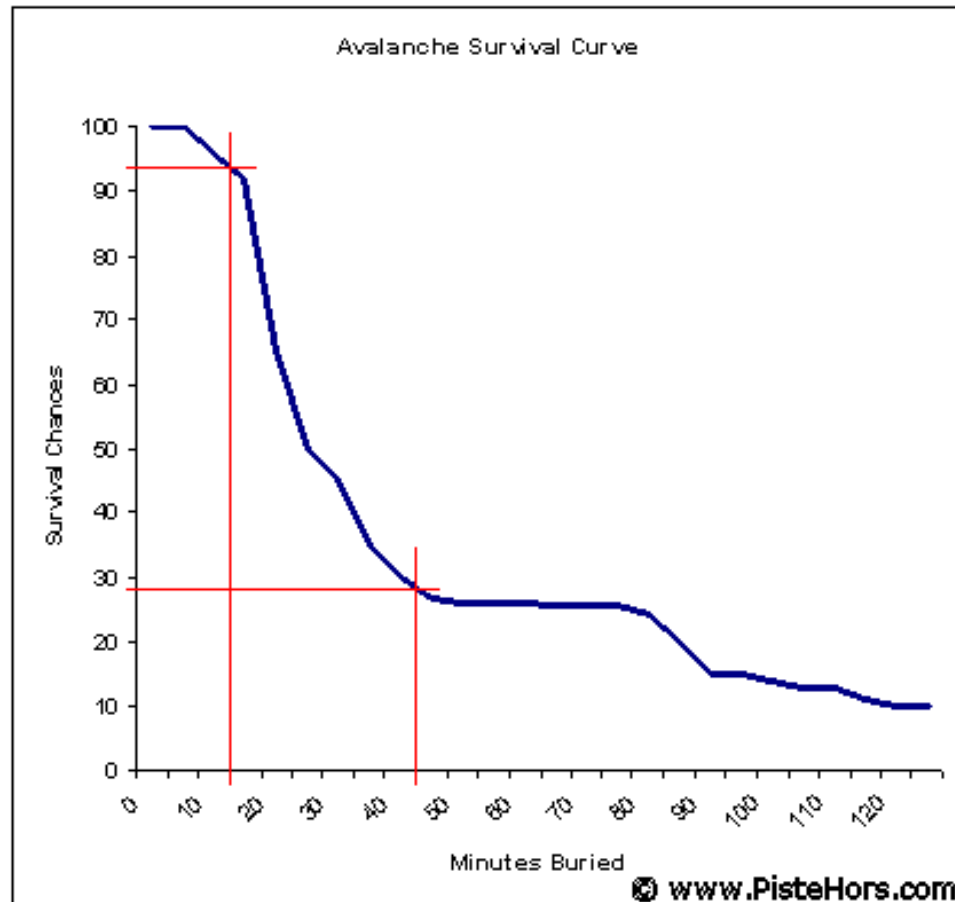
FAMILY SEPARATION RACIAL DISPARITY RATIO OCTOBER 2020

Reunification

DISCHARGES FROM FOSTER CARE

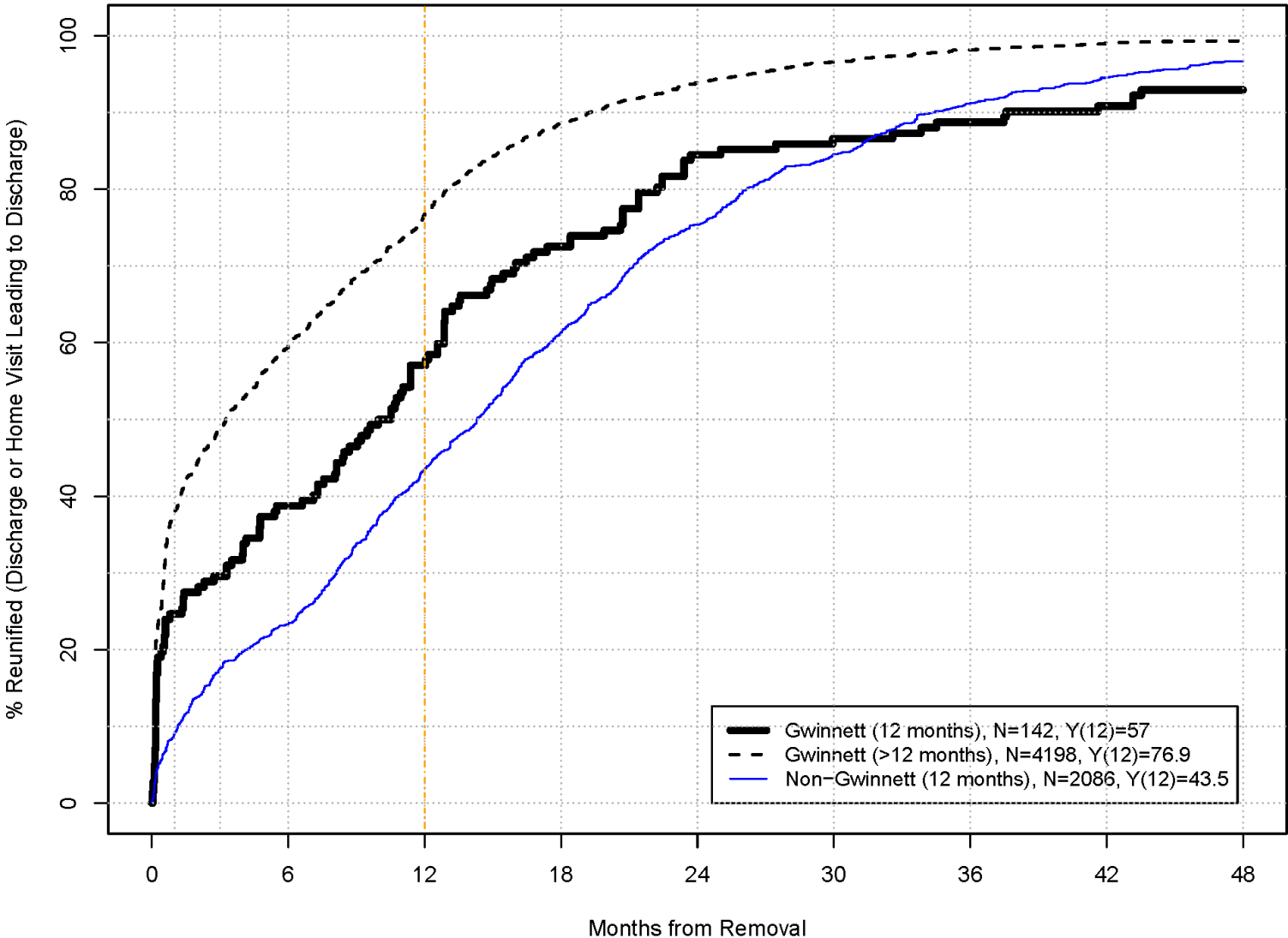
SURVIVAL CURVES

- Analyze a variable of interest as it changes over time



DISCHARGES TO REUNIFICATION BY LENGTH OF STAY

OCTOBER 1998 – SEPTEMBER 2021

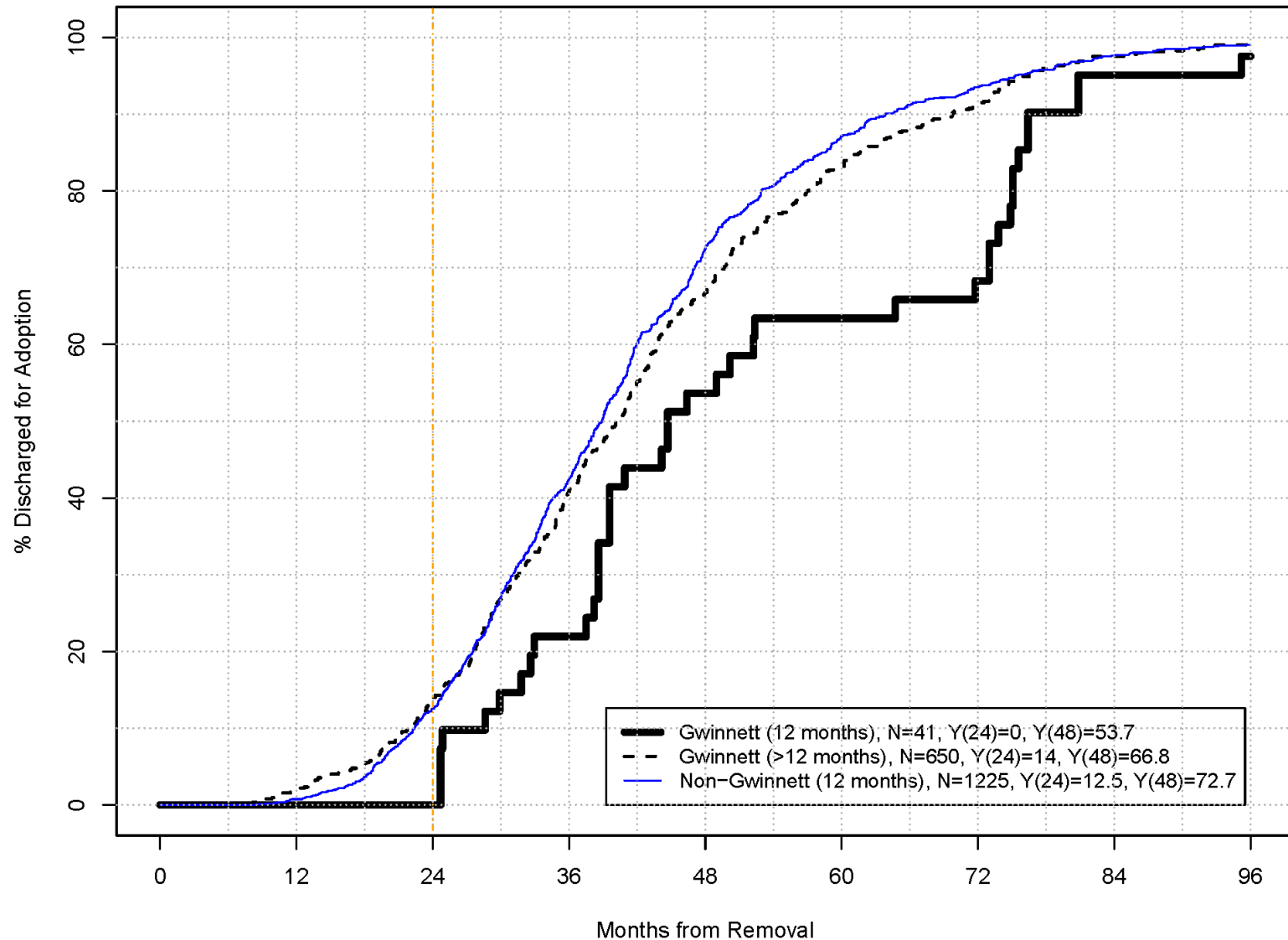


Adoption

DISCHARGES FROM FOSTER CARE

DISCHARGES TO ADOPTION BY LENGTH OF STAY

OCTOBER 1998 – SEPTEMBER 2021

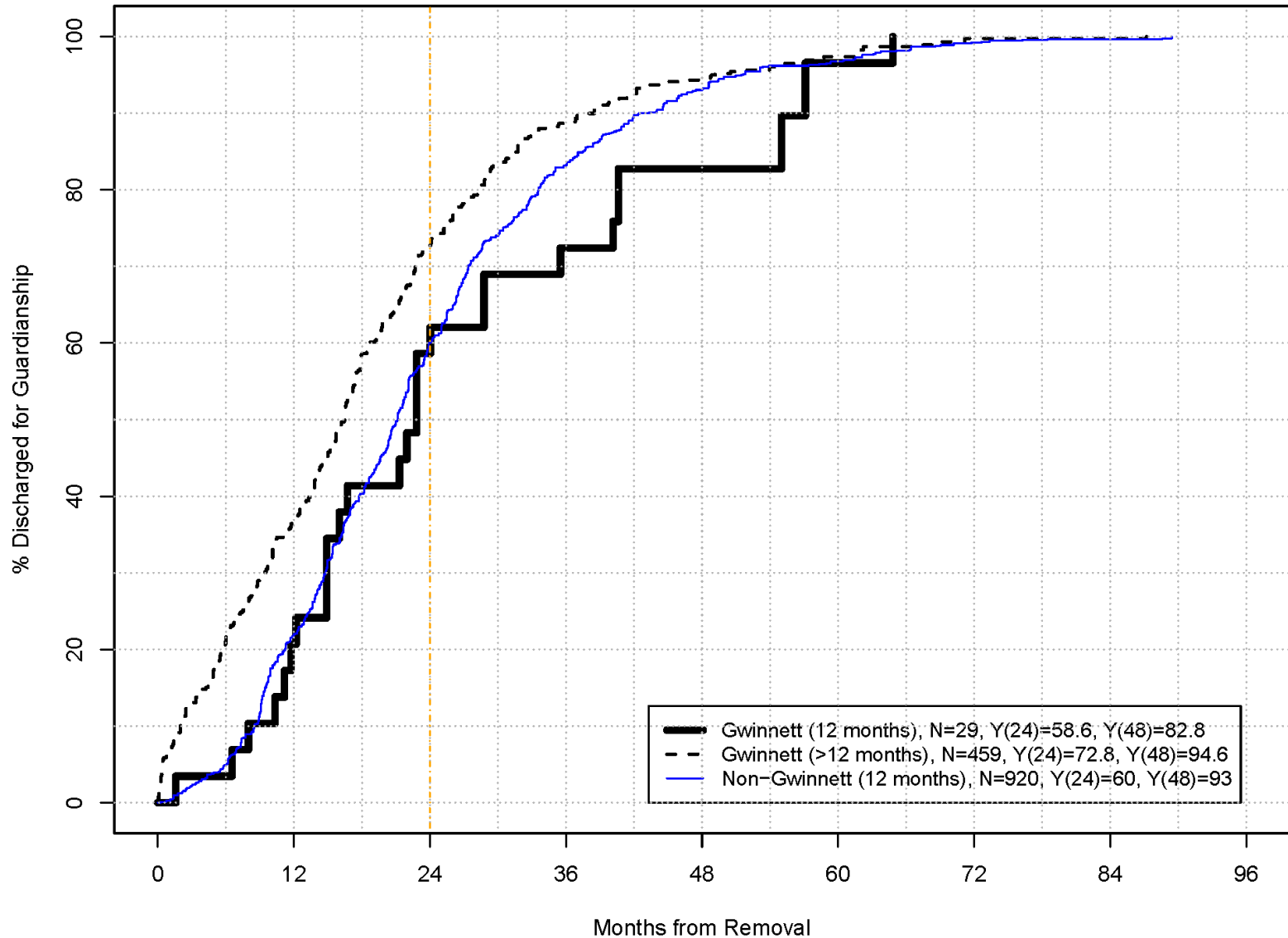


Guardianship

DISCHARGES FROM FOSTER CARE

DISCHARGES TO GUARDIANSHIP BY LENGTH OF STAY

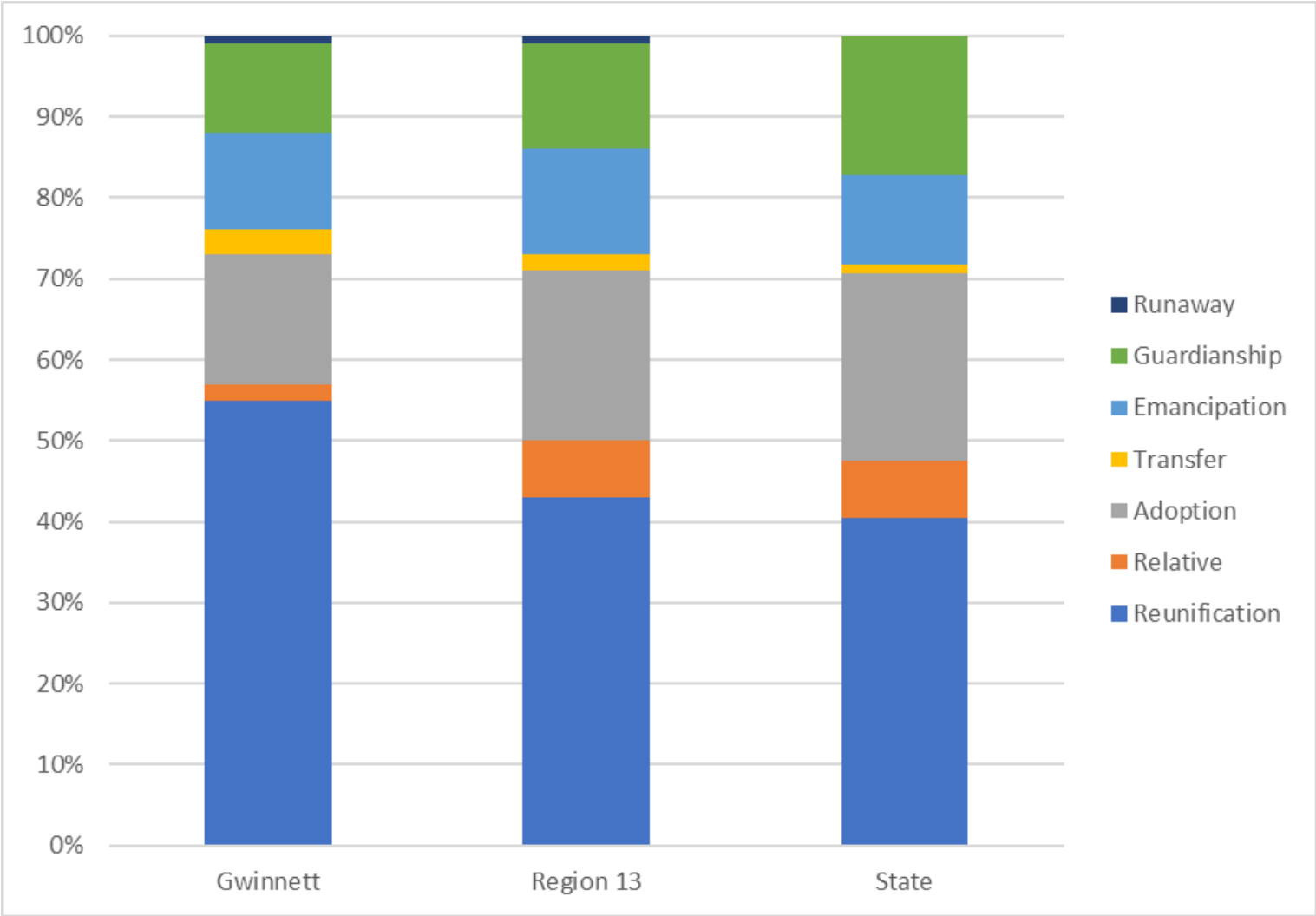
OCTOBER 1998 – SEPTEMBER 2021



All Discharge Types

DISCHARGES FROM FOSTER CARE

DISCHARGES FROM FOSTER CARE OCTOBER 2020 – SEPTEMBER 2021



QUESTIONS?