

Permanency Measures

Christine Barbery, Federal Plans Specialist

Deborah Burrus Germany, State Adoption
Director



SWDI: Statewide Data Indicator

What Do the Statewide Data Indicators Measure?

The table below presents the purpose of each of the seven data indicators. Click on the indicator title for more detailed information on how that indicator is calculated.

Indicator	Purpose
Permanency in 12 months (entries)	Measures whether permanency is achieved (through reunification, adoption, guardianship, or living with a relative) within 12 months of children entering foster care.
Permanency in 12 months (12-23 mos.)	Measures whether permanency is achieved if children have been in foster care for at least 12 months and not more than 23 months.
Permanency in 12 months (24+ mos.)	Measures whether permanency is achieved if children have been in foster care for at least 24 months.
Reentry to foster care	Measures whether children reenter foster care within 12 months of their discharge when permanency (excluding adoptions) was achieved within 12 months.
Placement stability	Measures whether children who the agency removes from their homes experience stability while they are in foster care.
Maltreatment in care	Measures whether children experience abuse or neglect while in the state child welfare system's placement and care responsibility.
Recurrence of maltreatment	Measures whether children who were the subject of a substantiated or indicated report of maltreatment experience subsequent maltreatment.



CFSR Overview

Safety, Permanency, and Well-Being

- *7 Outcomes*
- *18 Items*



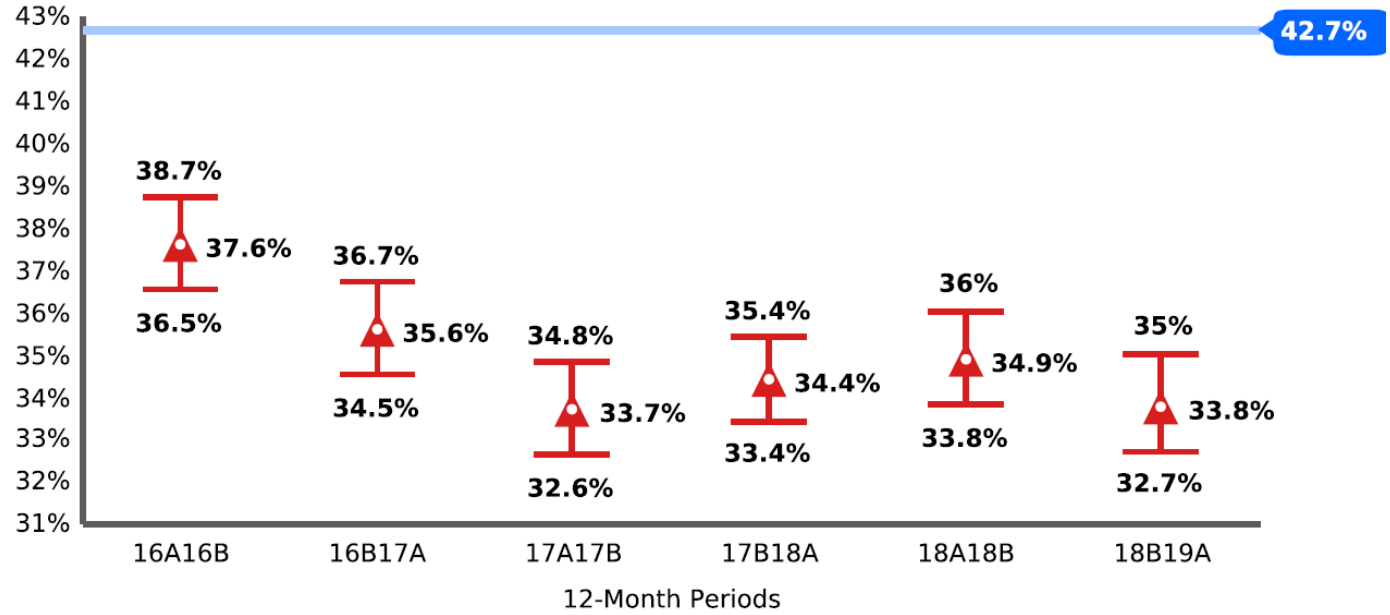
Permanency		Statewide December 2021
Outcome P1: Children have permanency and stability in their living situations.		22%
Item 4:	Stability of foster care placement	82%
Item 5:	Permanency goal for child	49%
Item 6:	Achieving reunification, guardianship, adoption, or other planned permanent living arrangement	31%
Outcome P2: The continuity of family relationships and connections is preserved for children		51%
Item 7:	Placement with siblings	84%
Item 8:	Visiting with parents and siblings in foster care	47%
Item 9:	Preserving connections	64%
Item 10:	Relative placement	56%
Item 11:	Relationship of child in care with parents	33%



CFSR Round 3

PERMANENCY IN 12 MONTHS (ENTRIES)

▲ A higher RSP value is desirable.



“Permanency within 12 Months of Entry” by Age

Age	Entry FFY2017	Exits w/in 12 Month	% Exited	Entry FFY2018	Exits w/in 12 Month	% Exited	Entry FFY2019	Exits w/in 12 Month	% Exited
< 1 yr	1,294	322	24.9%	1,413	369	26.1%	1,156	295	25.5%
1 - 5 yrs	2,354	792	33.6%	2,385	807	33.8%	1,785	611	34.2%
6 - 10 yrs	1,644	595	36.2%	1,668	648	38.8%	1,273	465	36.5%
11 - 16 yrs	1,812	686	37.9%	1,954	774	39.6%	1,762	650	36.9%
17 yrs	193	46	23.8%	189	43	22.8%	135	33	24.4%
Georgia	7,297	2,441	33.5%	7,609	2,641	34.7%	6,111	2,054	33.6%

Round 4 Goal: > 35.2%

Permanency 1 looks at all entries in a FFY and determines which children exited care within 12 months of entry. As a result, it requires two full years (plus another AFCARS submission beyond) to ensure all exits have been accounted for.

Source: Children’s Bureau, February 2022 Contextual Data Report AFCARS

“Permanency within 12 Months of Entry” by District

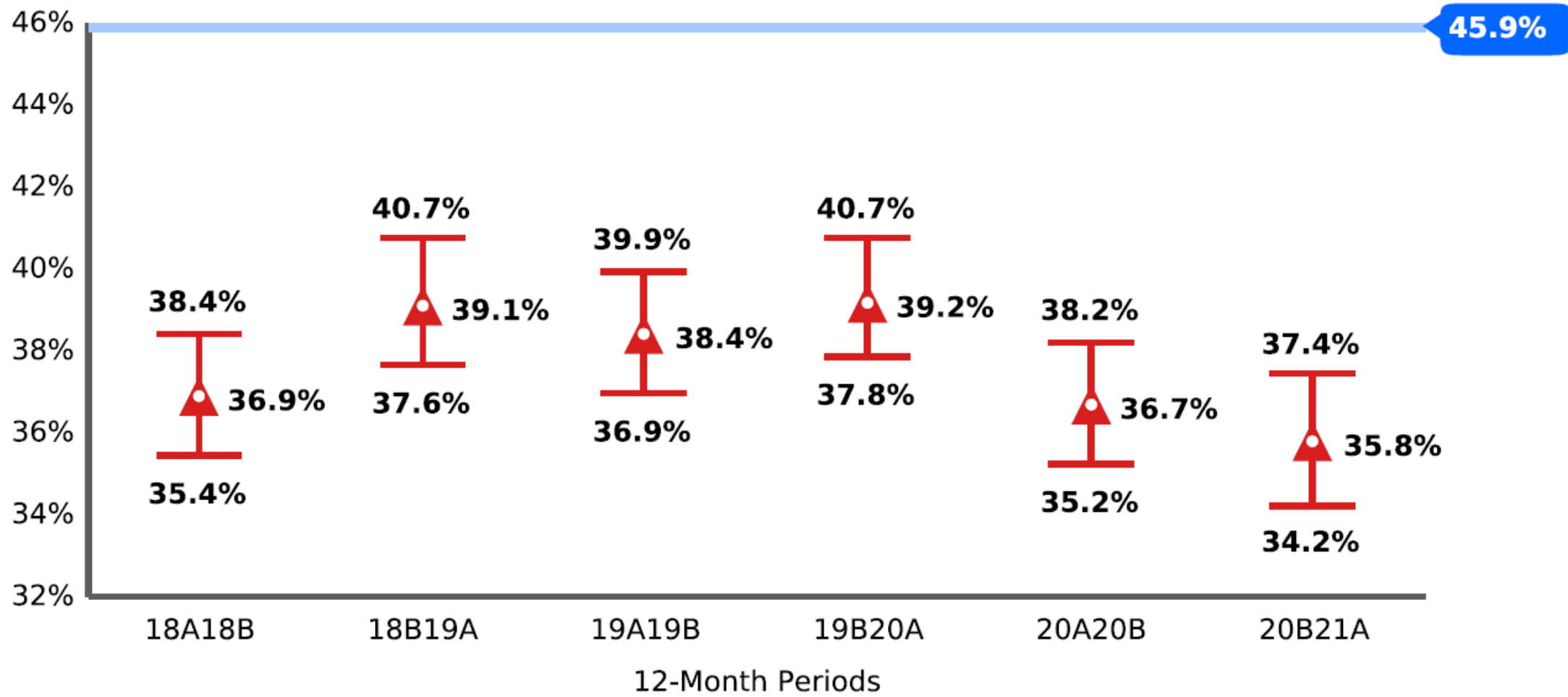
District	Entres FFY2017	Exits w/in 12 Mos.	% Exits <12 months	Entries FFY2018	Exits w/in 12 Mos.	% Exits <12 months	Entries 2019	Exits w/in 12 Mos.	% Exits <12 months
METRO	1694	711	42.0%	1489	577	38.8%	1232	505	41.0%
NORTH	2849	886	31.1%	3356	1189	35.4%	2760	936	33.9%
SOUTH	2754	844	30.6%	2764	875	31.7%	2119	613	28.9%
Georgia	7297	2441	33.5%	7609	2641	34.7%	6111	2054	33.6%

Round 4 Goal: > 35.2%

Permanency 1 looks at all entries in a FFY and determines which children exited care within 12 months of entry. As a result, it requires two full years (plus another AFCARS submission beyond) to ensure all exits have been accounted for.

PERMANENCY IN 12 MONTHS (12 - 23 MOS)

▲ A higher RSP value is desirable.



“Permanency after 12-23 Months” by Age

Age	FFY 2019 In Care 12 to 23 Mos	Exits w/in 12 Month	% Exited	FFY 2020 In Care 12 to 23 Mos	Exits w/in 12 Month	% Exited	FFY 2021 In Care 12 to 23 Mos	Exits w/in 12 Month	% Exited
1 - 5 yrs	1,705	744	43.6%	1,736	726	41.8%	1,436	561	39.1%
6 - 10 yrs	921	365	39.6%	853	340	39.9%	689	293	42.5%
11 - 16 yrs	863	315	36.5%	852	277	32.5%	831	318	38.3%
17 yrs	173	28	16.2%	190	28	14.7%	182	16	8.8%
Georgia	3,662	1,452	39.7%	3,631	1,371	37.8%	3,138	1,188	37.9%

Round 4 Goal: > 43.8%

Permanency 2 looks at children in care who have been in care for 12-23 months and determines if they have achieved permanency within 12 months.

Source: Children’s Bureau, February 2022 Contextual Data Report AFCARS

“Permanency after 12-23 Months” by District

District	FFY 2019 In Care 12 to 23 Mos	Exits w/in 12 Month	% Exited	FFY 2020 In Care 12 to 23 Mos	Exits w/in 12 Month	% Exited	FFY 2021 In Care 12 to 23 Mos	Exits w/in 12 Month	% Exited
METRO	693	235	33.9%	633	225	35.5%	554	190	34.3%
NORTH	1465	702	47.9%	1563	677	43.3%	1372	614	44.8%
SOUTH	1504	515	34.2%	1435	469	32.7%	1212	384	31.7%
Georgia	3662	1452	39.7%	3631	1371	37.8%	3138	1188	37.9%

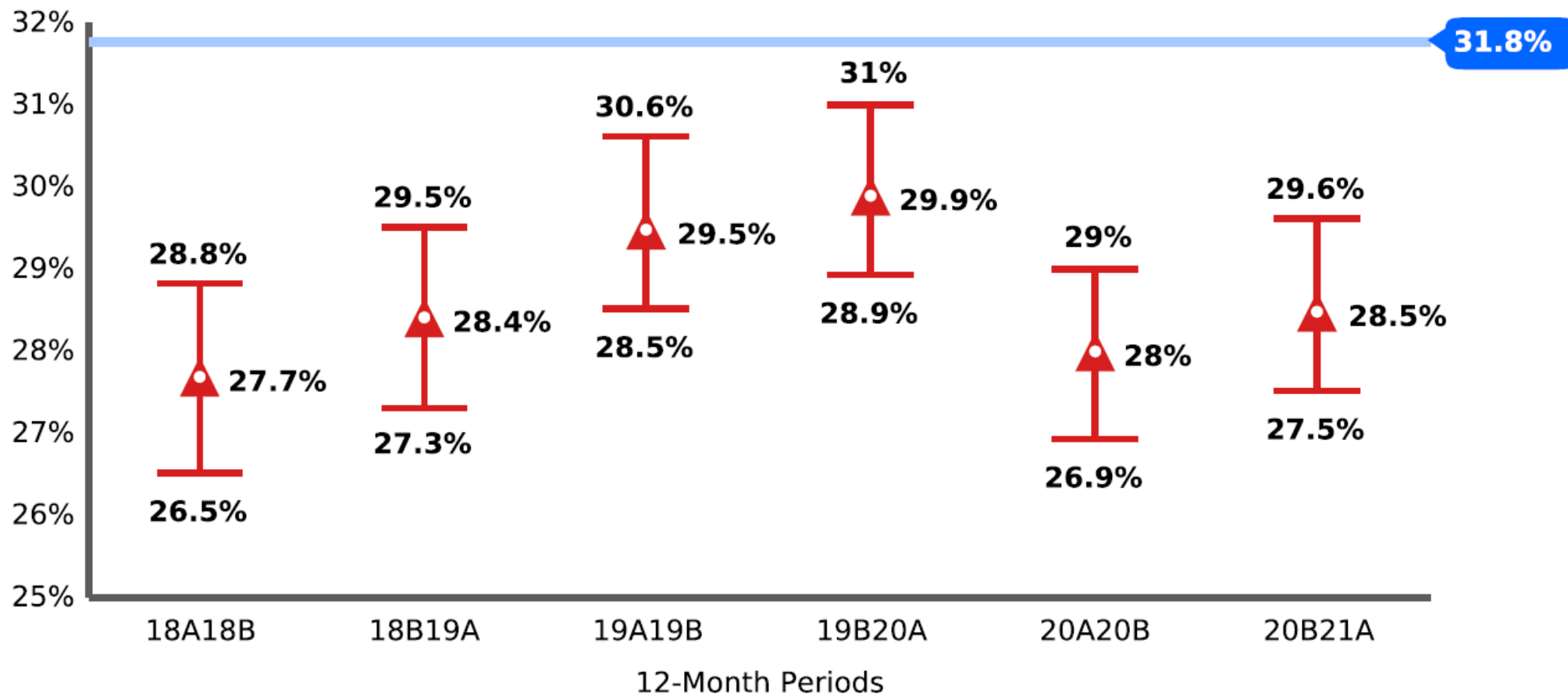
Round 4 Goal: 43.8%

Permanency 2 looks at children in care who have been in care for 12-23 months and determines if they have achieved permanency within 12 months.

Source: Children’s Bureau, February 2022 Contextual Data Report AFCARS

PERMANENCY IN 12 MONTHS (24+ MOS)

▲ A higher RSP value is desirable.



“Permanency after 24 Months” by Age

Age	FFY 2019 In Care >24 Mos	Exits w/in 12 Month	% Exited	FFY 2020 In Care >24 Mos	Exits w/in 12 Month	% Exited	FFY 2021 In Care >24 Mos	Exits w/in 12 Month	% Exited
1 - 5 yrs	1,229	607	49.4%	1,292	634	49.1%	1,355	666	49.2%
6 - 10 yrs	1,221	515	42.2%	1,262	515	40.8%	1,281	520	40.6%
11 - 16 yrs	1,307	385	29.5%	1,370	353	25.8%	1,443	419	29.0%
17 yrs	340	32	9.4%	306	18	5.9%	339	30	8.8%
Georgia	4,097	1,539	37.6%	4,230	1,520	35.9%	4,418	1,635	37.0%

Round 4 Goal: > 37.3%

Permanency 3 looks at children in care who have been in care for 24 months and determines if they have achieved permanency within 12 months.

Source: Children’s Bureau, February 2022 Contextual Data Report AFCARS

“Permanency after 24 Months” by District

District	FFY 2019 In Care 12 to 23 Mos	Exits w/in 12 Month	% Exited	FFY 2020 In Care 12 to 23 Mos	Exits w/in 12 Month	% Exited	FFY 2021 In Care 12 to 23 Mos	Exits w/in 12 Month	% Exited
METRO	1027	386	37.6%	983	330	33.6%	933	358	38.4%
NORTH	1305	576	44.1%	1294	582	45.0%	1400	608	43.4%
SOUTH	1765	577	32.7%	1953	608	31.1%	2085	669	32.1%
Georgia	4097	1539	37.6%	4230	1520	35.9%	4418	1635	37.0%

Round 4 Goal: 37.3%

Permanency 3 looks at children in care who have been in care for 24 months and determines if they have achieved permanency within 12 months.

Source: Children’s Bureau, February 2022 Contextual Data Report AFCARS

HOW CAN YOU HELP?



Partnership Opportunities



ROLE of the COURTS

- Court representatives are critical partners in the state child welfare agency's ability to achieve positive outcomes for children and families. Decisions and timeframes of the court directly affect the agency's ability to meet child welfare goals.

Role of the Court

The courts can ensure that the agency follows child welfare laws and standards





ROLE of the COURTS

How effective the state is in identifying children for whom termination of parental rights is appropriate and whether termination of parental rights actions are filed in a timely manner



ROLE of the COURTS

How engaged parents are in the case planning and goal-setting processes

How effectively foster parents and other caretakers are notified and have an opportunity to be heard in court hearings about the children in their care.





Thank You!

How to reach us!

- Christine Barbery (470) 747-0288
- Deborah B. Germany (404) 276-6331